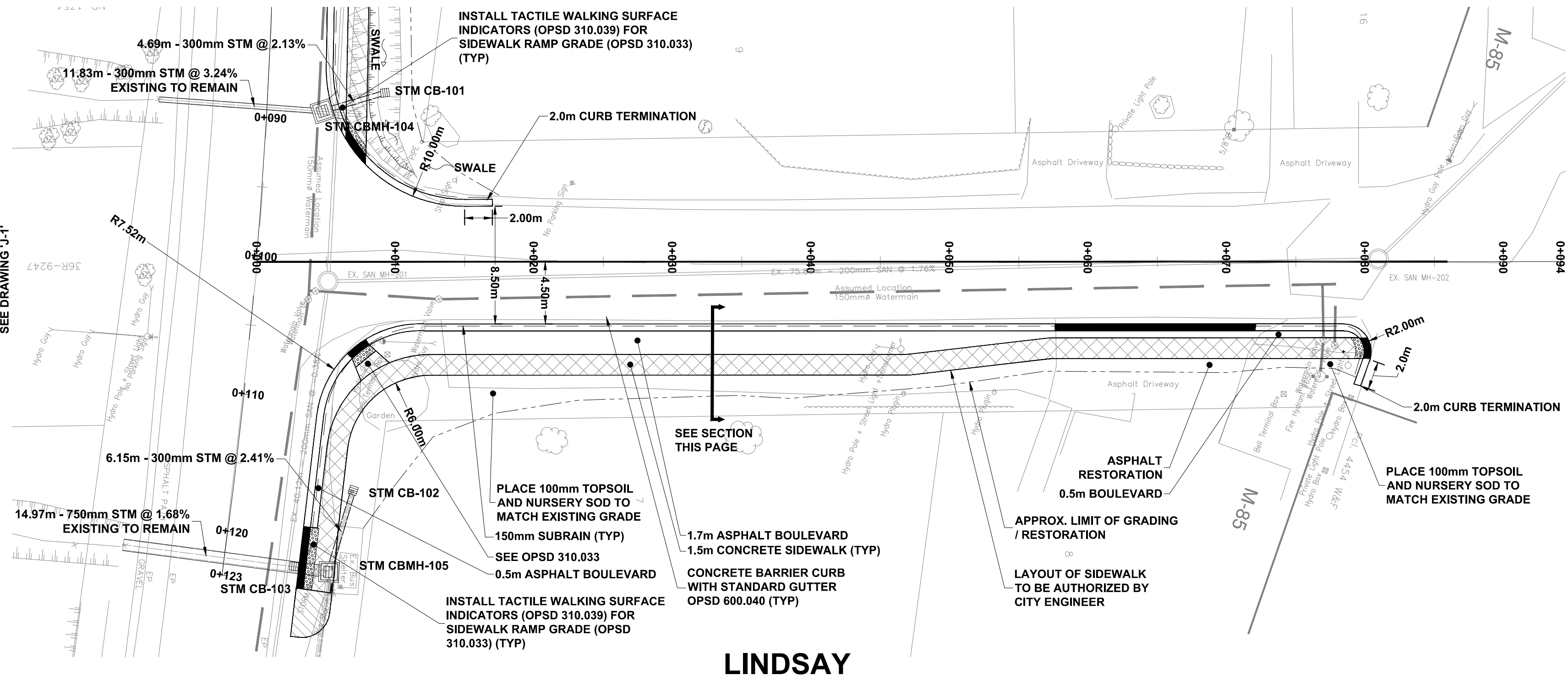
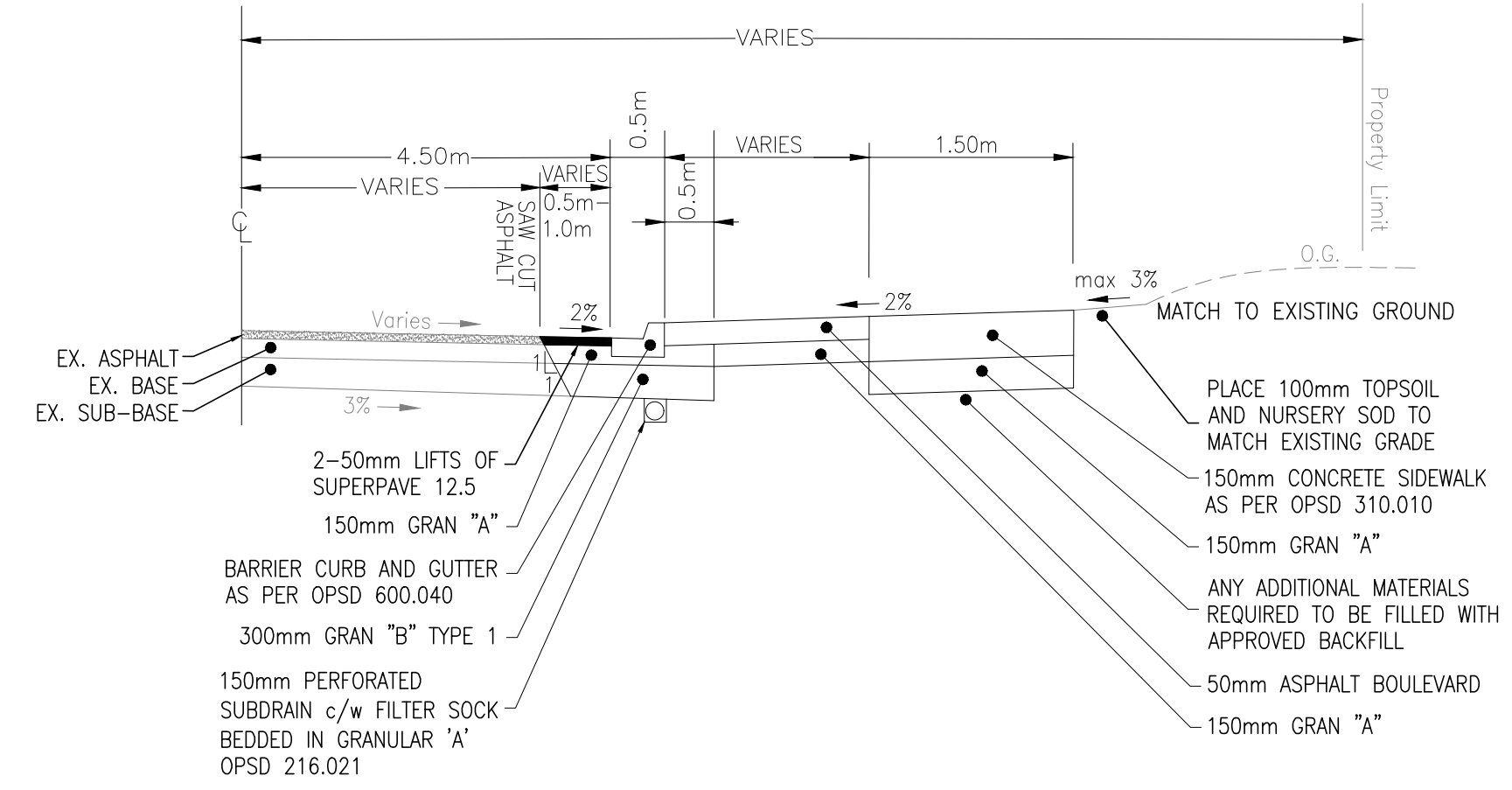


JOHNSTON
SEE DRAWING "J-1"

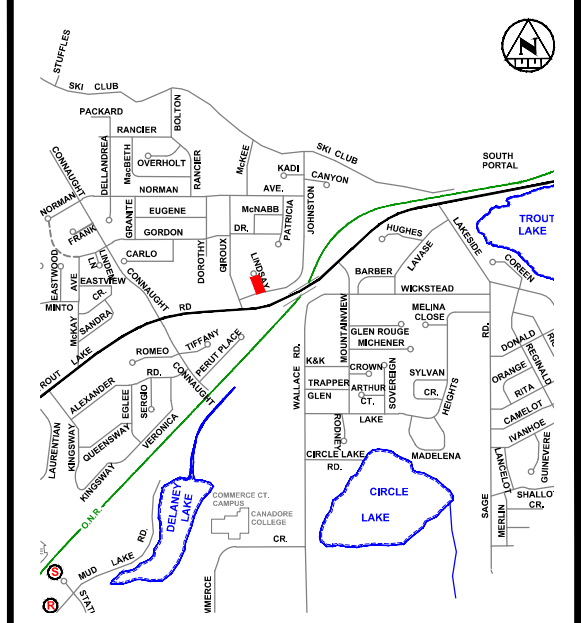
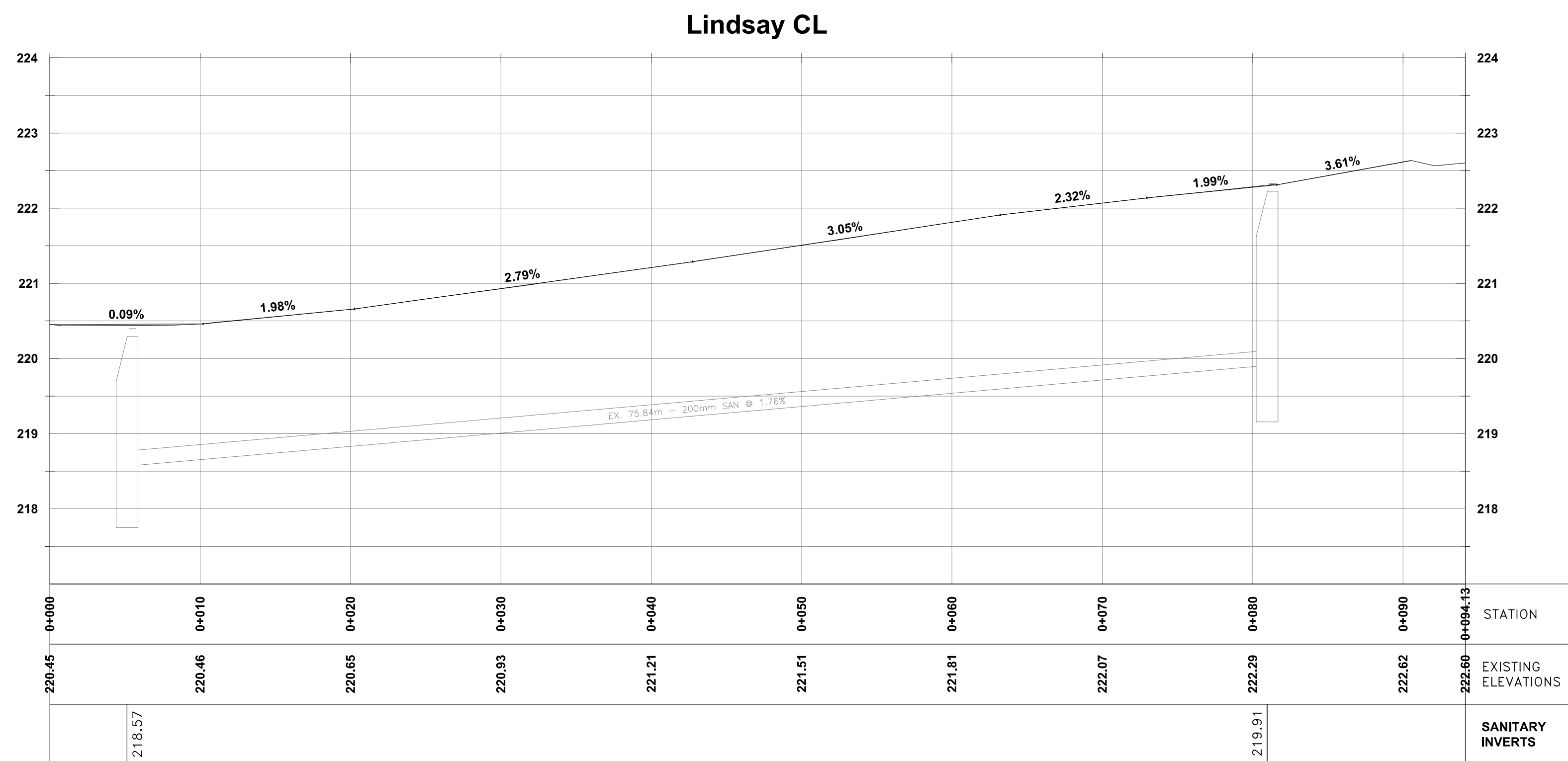


LINDSAY



TYPICAL LINDSAY STREET SECTION

N.T.S.



KEY PLAN

NOTES

- THE UTILITIES INFORMATION CONTAINED ON THIS DRAWING MAY BE BASED UPON DATA PROVIDED BY OTHERS AND MAY NOT HAVE BEEN VERIFIED BY EITHER AS-CONSTRUCTED DRAWINGS OR AN ONTARIO LAND SURVEYOR. THE CITY OF NORTH BAY CANNOT ACCEPT RESPONSIBILITY FOR ERRORS OR OMISSIONS ON ANY INFORMATION SHOWN HEREIN. FIELD VERIFICATION, LAND SURVEYS OR EXCAVATION (WITH CITY APPROVALS) MAY BE REQUIRED TO DETERMINE ACTUAL LOCATION OF ANY AND ALL UTILITIES OR PROPERTY LINES.

LEGEND

PROPOSED

- STORM SEWER
- STORM MANHOLE
- CATCHBASIN
- CATCHBASIN MANHOLE
- SUB-DRAIN
- CONCRETE CURB WITH DROP
- SIDEWALK TACTILE PLATE
- CONCRETE SIDEWALK
- ASPHALT

REVISIONS

No.	Date	By	Description
1.	07/16/21	G.W.C.	Issued for Construction



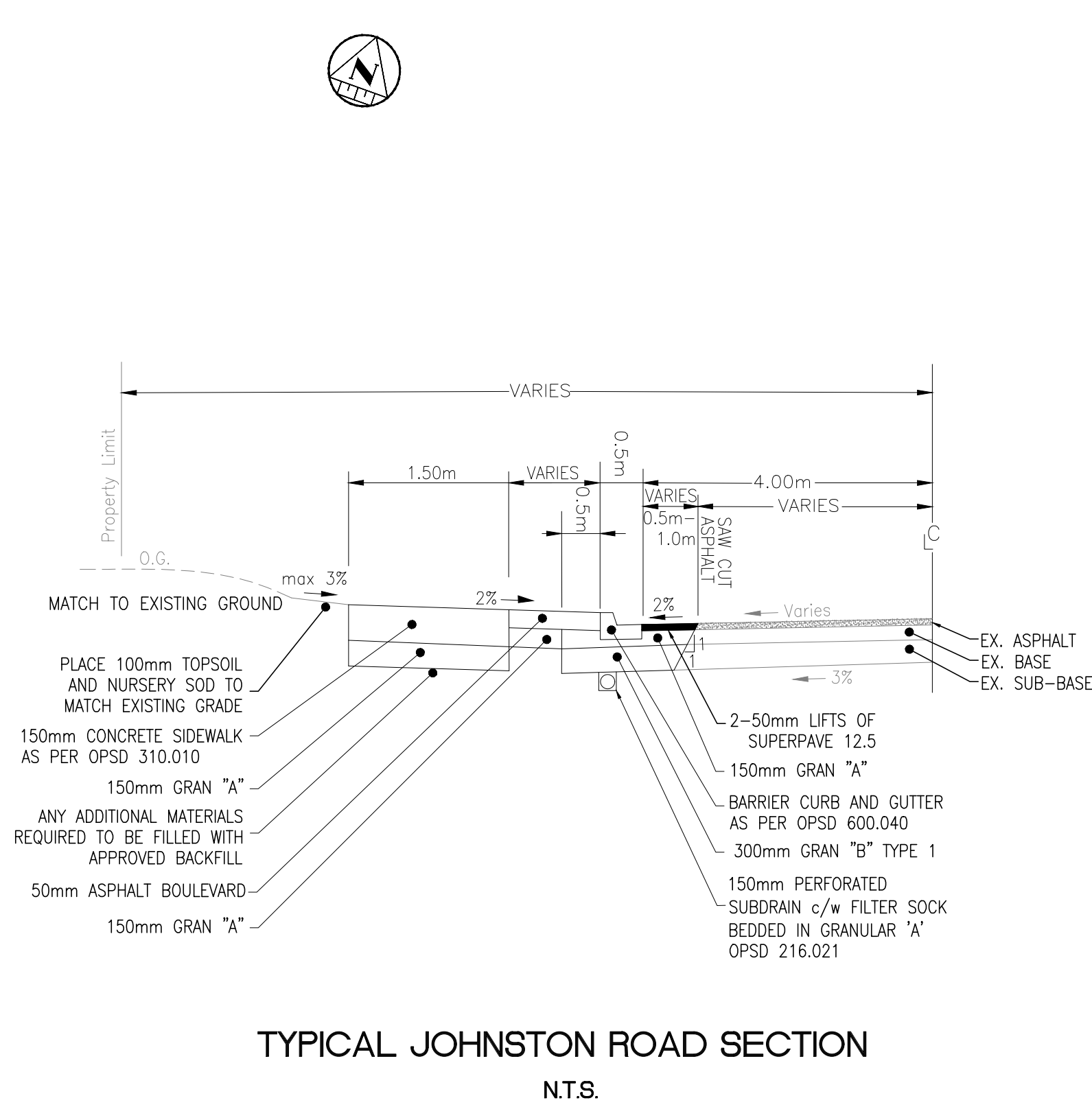
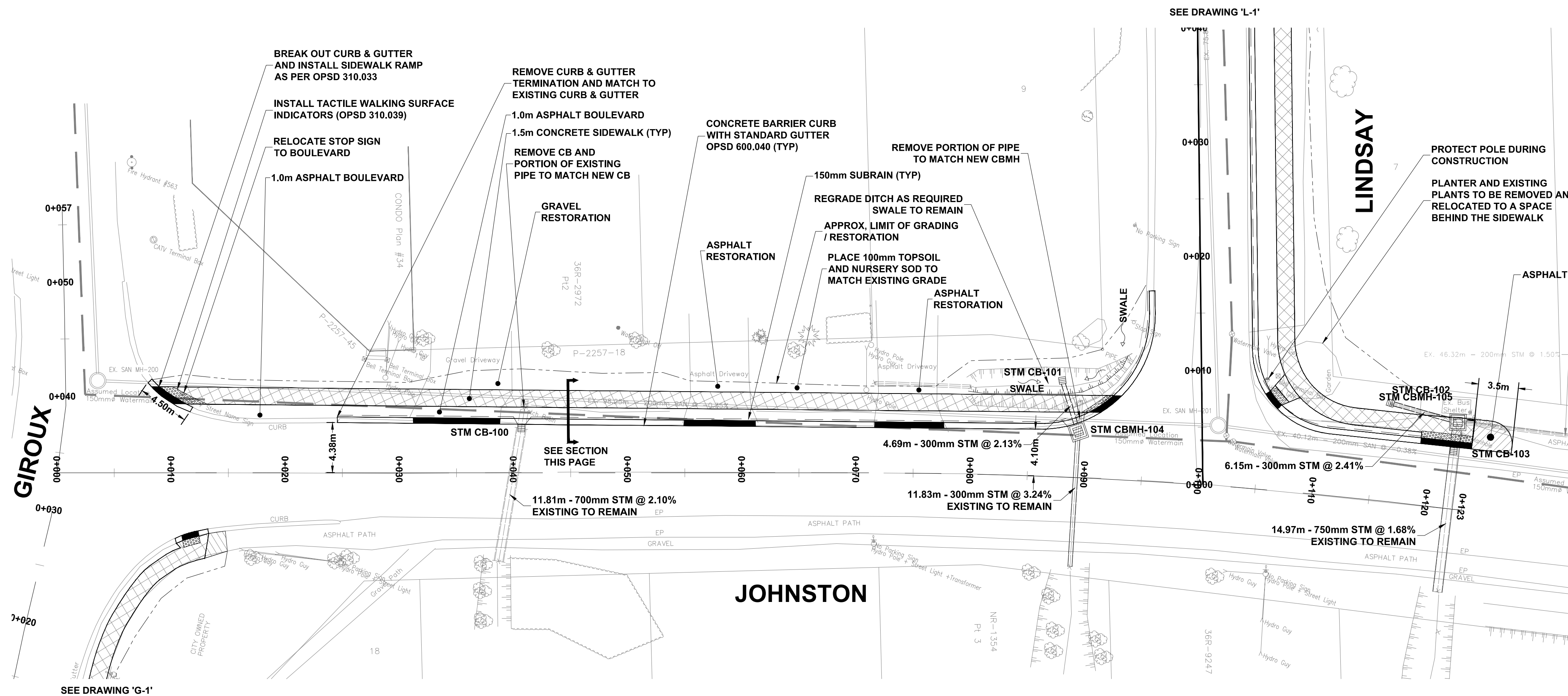
JOHNSTON RD. & LINDSAY ST. SIDEWALK

NEW CONSTRUCTION

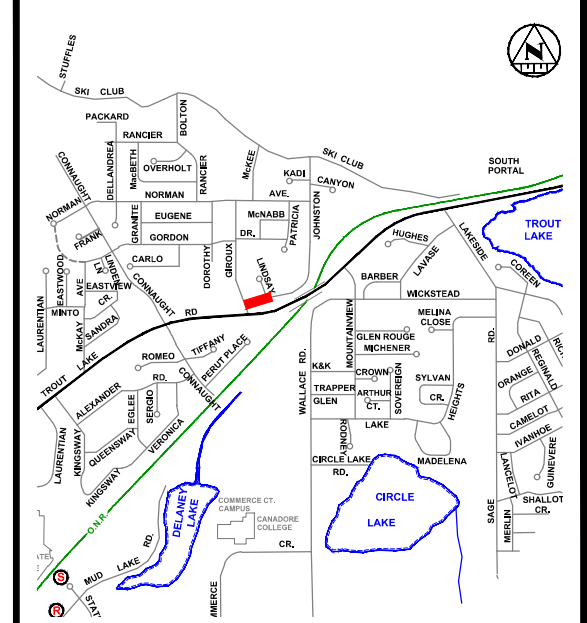
LINDSAY STREET
Plan & Profile

Sta. 0+000 to Sta. 0+094

Designer: G.W.C.	Checked by: G.Mc.
Date: 06/30/2021	Approved by: A.L.
Scale: 1:250 1:50	Drawing Set: 1 of 3



TYPICAL JOHNSTON ROAD SECTION
N.T.S.



KEY PLAN

NOTES

1. THE UTILITIES INFORMATION CONTAINED ON THIS DRAWING MAY BE BASED UPON DATA PROVIDED BY OTHERS AND MAY NOT HAVE BEEN VERIFIED BY EITHER AS-CONSTRUCTED DRAWINGS OR AN ONTARIO LAND SURVEYOR. THE CITY OF NORTH BAY CANNOT ACCEPT RESPONSIBILITY FOR ERRORS OR OMISSIONS ON ANY INFORMATION SHOWN HEREIN. FIELD VERIFICATION, LAND SURVEYS OR EXCAVATION (WITH CITY APPROVALS) MAY BE REQUIRED TO DETERMINE ACTUAL LOCATION OF ANY AND ALL UTILITIES OR PROPERTY LINES.

LEGEND

PROPOSED

- STORM SEWER
- STORM MANHOLE
- CATCHBASIN
- CATCHBASIN MANHOLE
- SUB-DRAIN
- CONCRETE CURB WITH DROP
- ▨ SIDEWALK TACTILE PLATE
- ▨ CONCRETE SIDEWALK
- ▨ ASPHALT

REVISIONS

No.	Date	By	Description
1.	07/16/21	G.W.C.	Issued for Construction

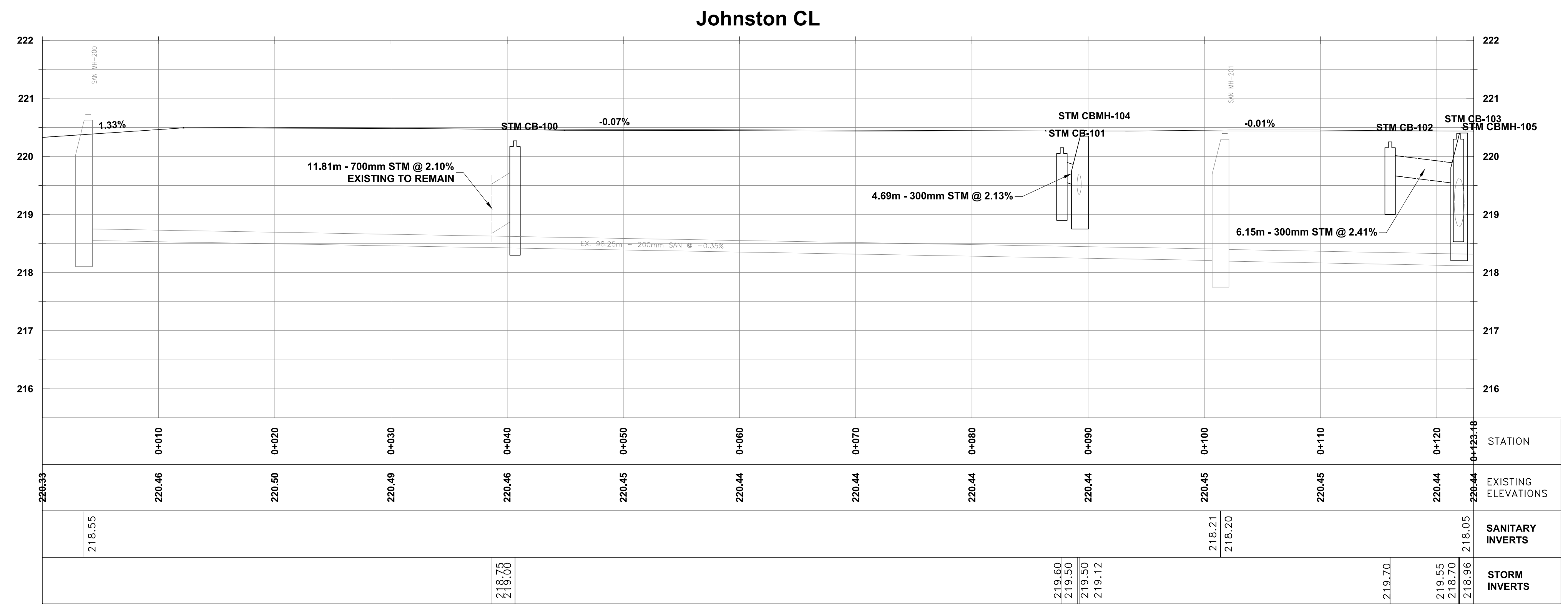


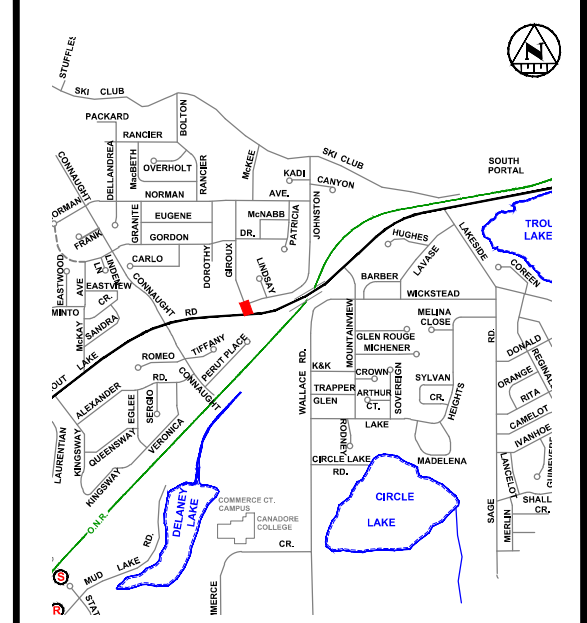
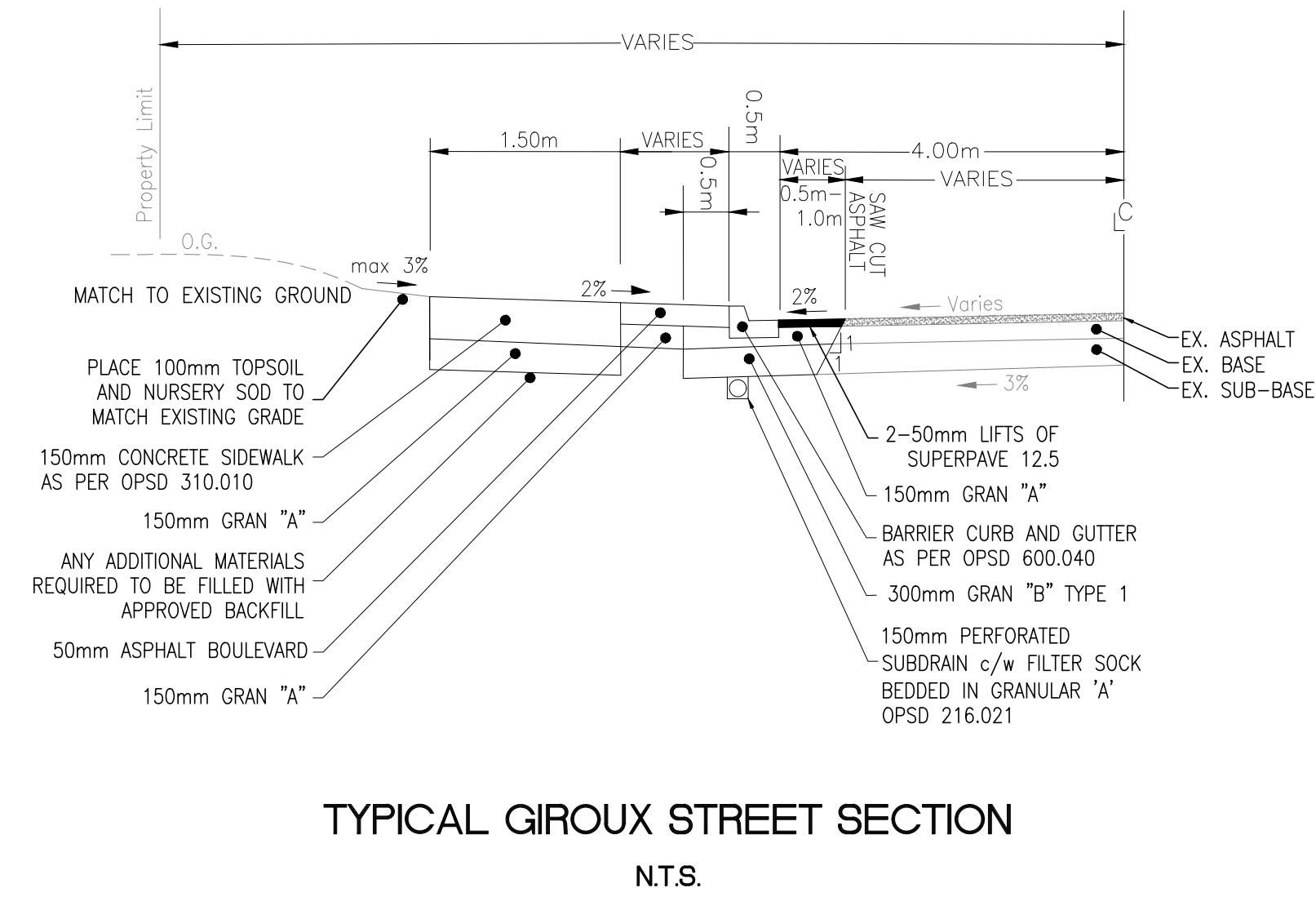
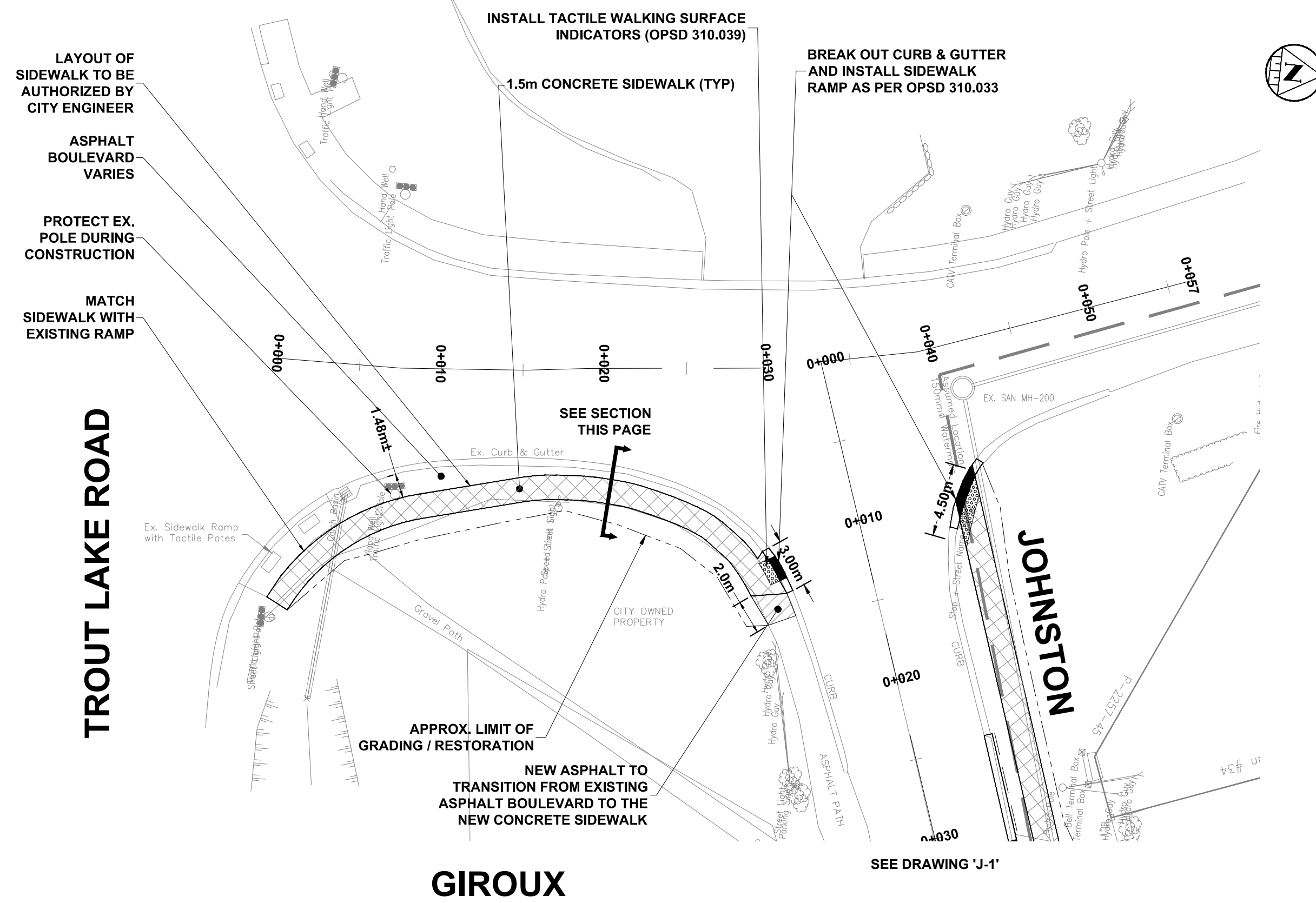
JOHNSTON RD. & LINDSAY ST. SIDEWALK

NEW CONSTRUCTION

JOHNSTON ROAD Plan & Profile
Sta. 0+000 to Sta. 0+123

Designer: G.W.C.	Checked by: G.Mc.
Date: 06/30/2021	Approved by: A.L.
Scale: 1:250	
Drawing Number: J-1	Drawing Set: 2 of 3





KEY PLAN

NOTES

1. THE UTILITIES INFORMATION CONTAINED ON THIS DRAWING MAY BE BASED UPON DATA PROVIDED BY OTHERS AND MAY NOT HAVE BEEN VERIFIED BY EITHER AS-CONSTRUCTED DRAWINGS OR AN ONTARIO LAND SURVEYOR. THE CITY OF NORTH BAY CANNOT ACCEPT RESPONSIBILITY FOR ERRORS OR OMISSIONS ON ANY INFORMATION SHOWN HEREIN. FIELD VERIFICATION, LAND SURVEYS OR EXCAVATION (WITH CITY APPROVALS) MAY BE REQUIRED TO DETERMINE EXACT LOCATION OF ANY AND ALL UTILITIES OR PROPERTY LINES.

LEGEND

- PROPOSED**
- STORM SEWER
 - STORM MANHOLE
 - CATCHBASIN
 - CATCHBASIN MANHOLE
 - SUB-DRAIN
 - CONCRETE CURB WITH DROP
 - SIDEWALK TACTILE PLATE
 - CONCRETE SIDEWALK
 - ASPHALT

REVISIONS

No.	Date	By	Description
1.	07/16/21	G.W.C.	Issued for Construction



JOHNSTON RD. & LINDSAY ST. SIDEWALK

NEW CONSTRUCTION

GIROUX STREET Plan & Profile
 Sta. 0+000 to Sta. 0+057

Designer: G.W.C.	Checked by: G.Mc.
Date: 06/30/2021	Approved by: A.L.
Scale: 1:250 1:50	Drawing Set: G-1 3 of 3

