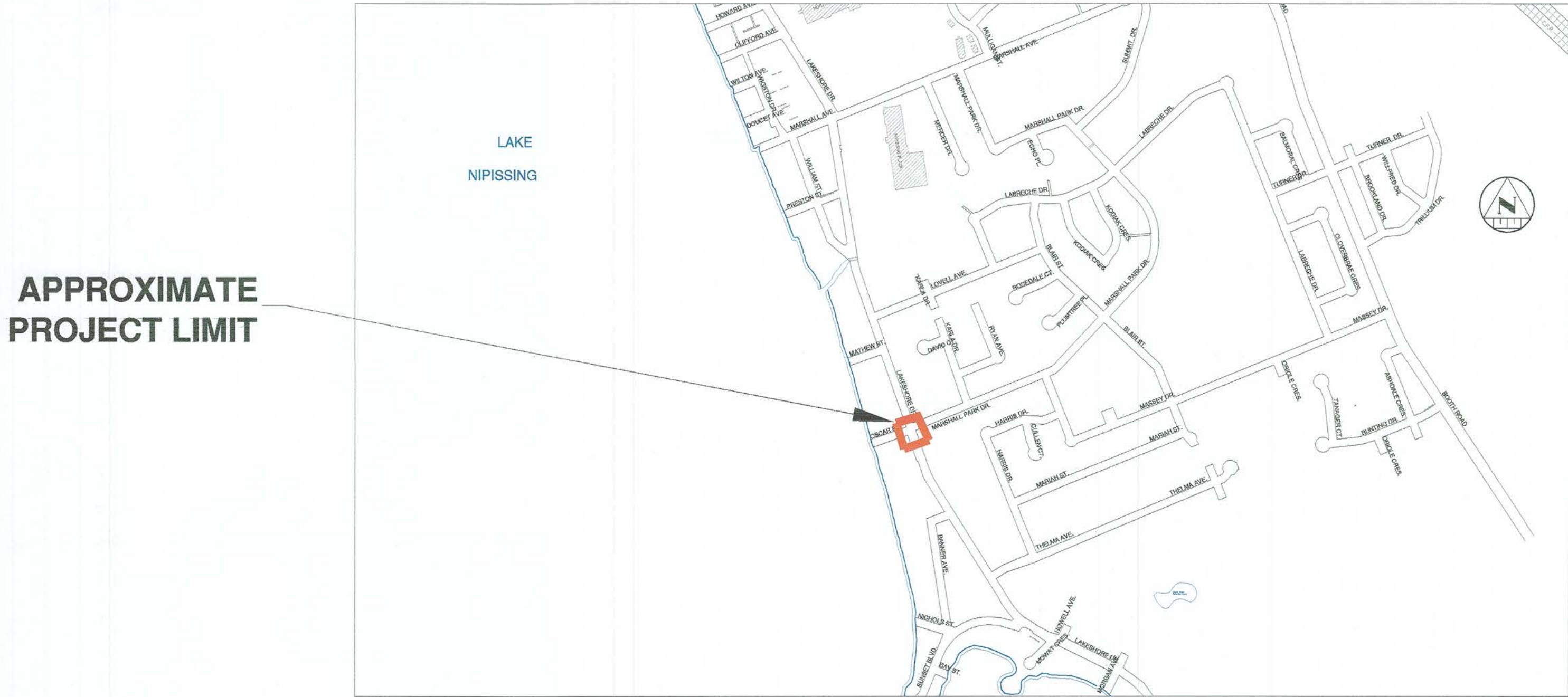


THE CORPORATION OF THE CITY OF NORTH BAY LAKESHORE DR. AND MARSHALL PARK DR. INTERSECTION IMPROVEMENTS

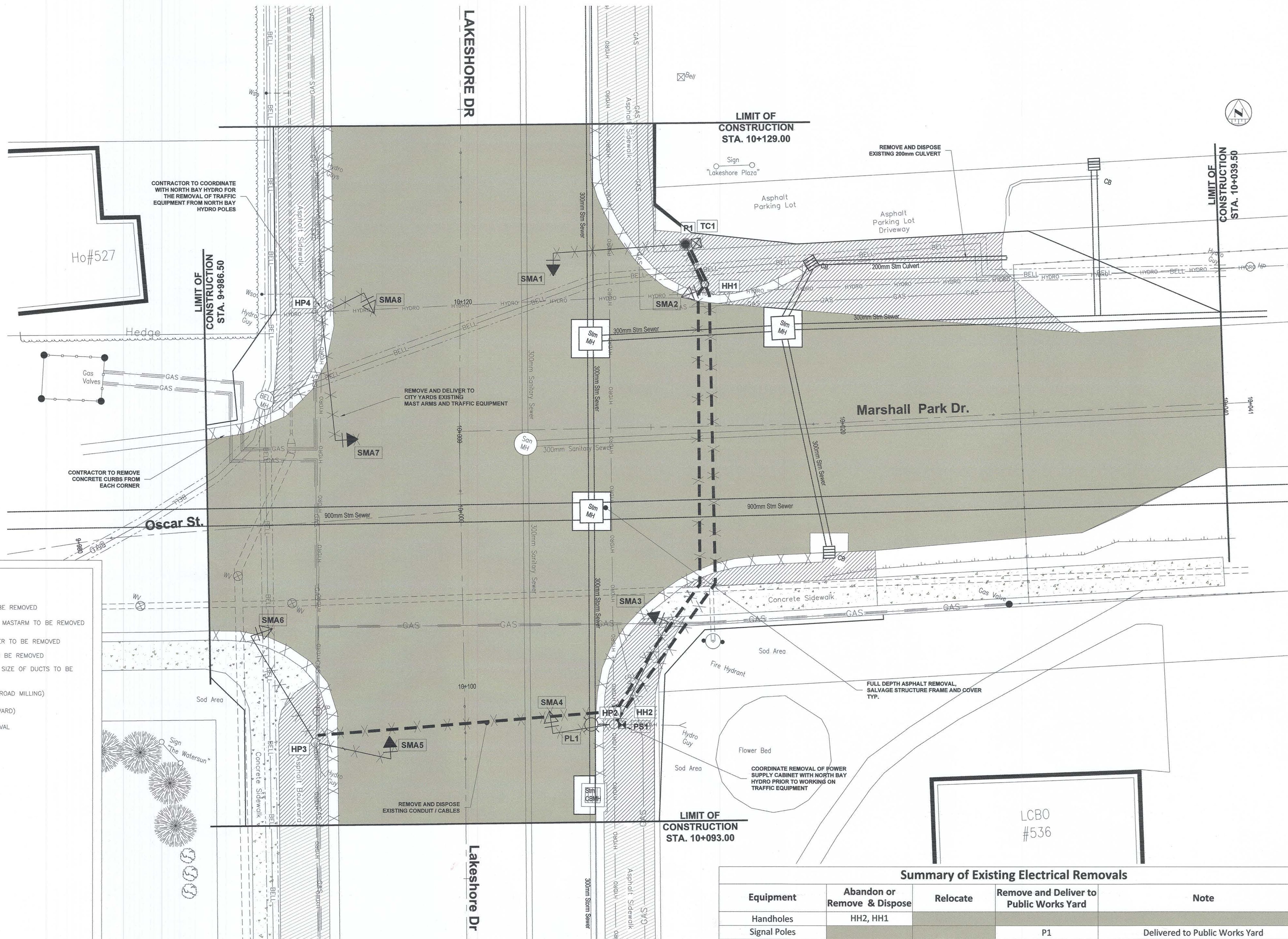
TENDER 2025-69



KEY PLAN
1:10000

LIST OF DRAWINGS:

DWG SET No.	DWG No.	DESCRIPTION
1		TITLE PAGE
2	T-1	ROAD and TRAFFIC SIGNAL REMOVALS
3	T-2	NEW CONSTRUCTION CIVIL WORKS
4	T-3	TRAFFIC SIGNAL NEW CONSTRUCTION and LAYOUT
5	TW-1	TRAFFIC SIGNAL WIRING DIAGRAM
6	D-1	ROAD WORK DETAILS
7	D-2	TRAFFIC SIGNALS EQUIPMENT DETAILS
8	D-3	TRAFFIC SIGNALS ELECTRICAL DETAILS



LEGEND:

REMOVAL

- ⊗ TS EXISTING TRAFFIC SIGNAL POLE TO BE REMOVED
- ⊗ EXISTING TRAFFIC SIGNAL HEAD AND MASTARM TO BE REMOVED
- ⊗ EXISTING TRAFFIC SIGNAL CONTROLLER TO BE REMOVED
- ⊗ EXISTING ELECTRICAL HANDHOLES TO BE REMOVED
- 1X100mm DIRECT BURIED DUCT, NUMBER AND SIZE OF DUCTS TO BE REMOVED
- LIMIT OF ASPHALT MILLING, 50mm (ROAD MILLING)
- LIMIT OF ASPHALT REMOVAL (BOULEVARD)
- LIMIT OF CONCRETE SIDEWALK REMOVAL
- X X ITEMS TO BE REMOVED

EXISTING

- HYDRO HYDRO CABLE, AERIAL
- BELL BELL CABLE, BURIED
- GAS GAS MAIN
- WATERMAIN WATERMAIN
- WATERVALVE WATERVALVE
- HP EXISTING HYDRO POLE TO REMAIN
- HP#x HYDRO POLE #x
- HH#x HAND HOLD #x
- SMA#x SIGNAL MAST ARM #x
- TC#x TRAFFIC CONTROLLER #x
- PS#x POWER SUPPLY #x
- PL#x POLE LUMINAIRE #x
- F#x TRAFFIC SIGNAL POLE #x

Summary of Existing Electrical Removals				
Equipment	Abandon or Remove & Dispose	Relocate	Remove and Deliver to Public Works Yard	Note
Handholes	HH2, HH1			
Signal Poles			P1	Delivered to Public Works Yard
Signal Mast Arms			1-8	Delivered to Public Works Yard
Signal Heads			1-8	Delivered to Public Works Yard
Pedestrian head and arm			L1, HP2, HP3, HP4	Delivered to Public Works Yard
Pedestrian push button			L1, HP2, HP3, HP4	Delivered to Public Works Yard
Controller		TC1		Relocate to new Cabinet
Pre-emption				Delivered to Public Works Yard
Luminaire and Mast Arm				Luminaire and arm to remain on the existing Hydro poles
Underground Cable	All			Dispose all cable
Underground Duct	All			Abandon ducts to be removed or filled with grout

KEY PLAN

GENERAL NOTES

- THE UTILITIES INFORMATION CONTAINED ON THIS DRAWING MAY BE BASED UPON DATA PROVIDED BY OTHERS AND MAY NOT HAVE BEEN VERIFIED BY EITHER AS-CONSTRUCTED DRAWINGS OR AN ONTARIO LAND SURVEYOR. THE CITY OF NORTH BAY CANNOT ACCEPT RESPONSIBILITY FOR ERRORS OR OMISSIONS ON ANY INFORMATION SHOWN HEREIN. FIELD VERIFICATION, LAND SURVEYS OR EXCAVATION (WITH CITY APPROVALS) MAY BE REQUIRED TO DETERMINE ACTUAL LOCATION OF ANY AND ALL UTILITIES OR PROPERTY LINES.
- REFER TO TRAFFIC SIGNAL DWG T-1 FOR TRAFFIC SIGNAL DRAWING LEGEND.
- CONTRACTOR TO REMOVE AND DISPOSE POLE CONCRETE FOUNDATION, HANDHOLES AND MISCELLANEOUS WIRE AS DETAILED ON DRAWINGS.
- CONTRACTOR TO COORDINATE WITH CITY OF NORTH BAY TRAFFIC DEPARTMENT PRIOR TO SALVAGING STEEL POLES, TRAFFIC SIGNAL HEADS, MAST ARMS, PED. HEADS AND TRAFFIC SIGNAL CONTROLLER. REMOVALS TO BE TURNED OVER TO THE CITY AS INDICATED.

No.	Date	By	Description
1	FEB 2025	DPN	Issued for 30% REVIEW
2	MAR 2025	DPN	Issued for 60% REVIEW
3	APR 2025	DPN	Issued for 90% REVIEW
4	JUN 17 2025	GWC	Issued for FINAL REVIEW
5	JUN 20 2025	GWC	Issued for TENDER

PROFESSIONAL ENGINEER
D.K. JACKOWSKI
100132110
June 17, 2025
PROVINCE OF ONTARIO

NORTH BAY
ONTARIO • CANADA
Just North Enough to be PERFECT

LAKESHORE DR. AND MARSHAL PARK DR. INTERSECTION IMPROVEMENTS
TENDER 2025-69

TRAFFIC SIGNAL

Road and Traffic Signal Removals

Designer:	D.P.N.	Checked by:	G.M./D.K.J.
Date:	Mar. 18, 2025	Approved by:	
Scale	1:75		
Drawing Number:	T-1	Drawing Set:	2 of 8

NOTES:

1. CONTRACTOR WILL OBTAIN EXISTING SEWER INVERTS PRIOR TO ISSUING SHOP DRAWINGS
2. D.I. CATCHBASIN GRATE SLOPE SHALL BE 4:1
3. SEE TRAFFIC SIGNAL DRAWING FOR EQUIPMENT LEGEND

LEGEND:

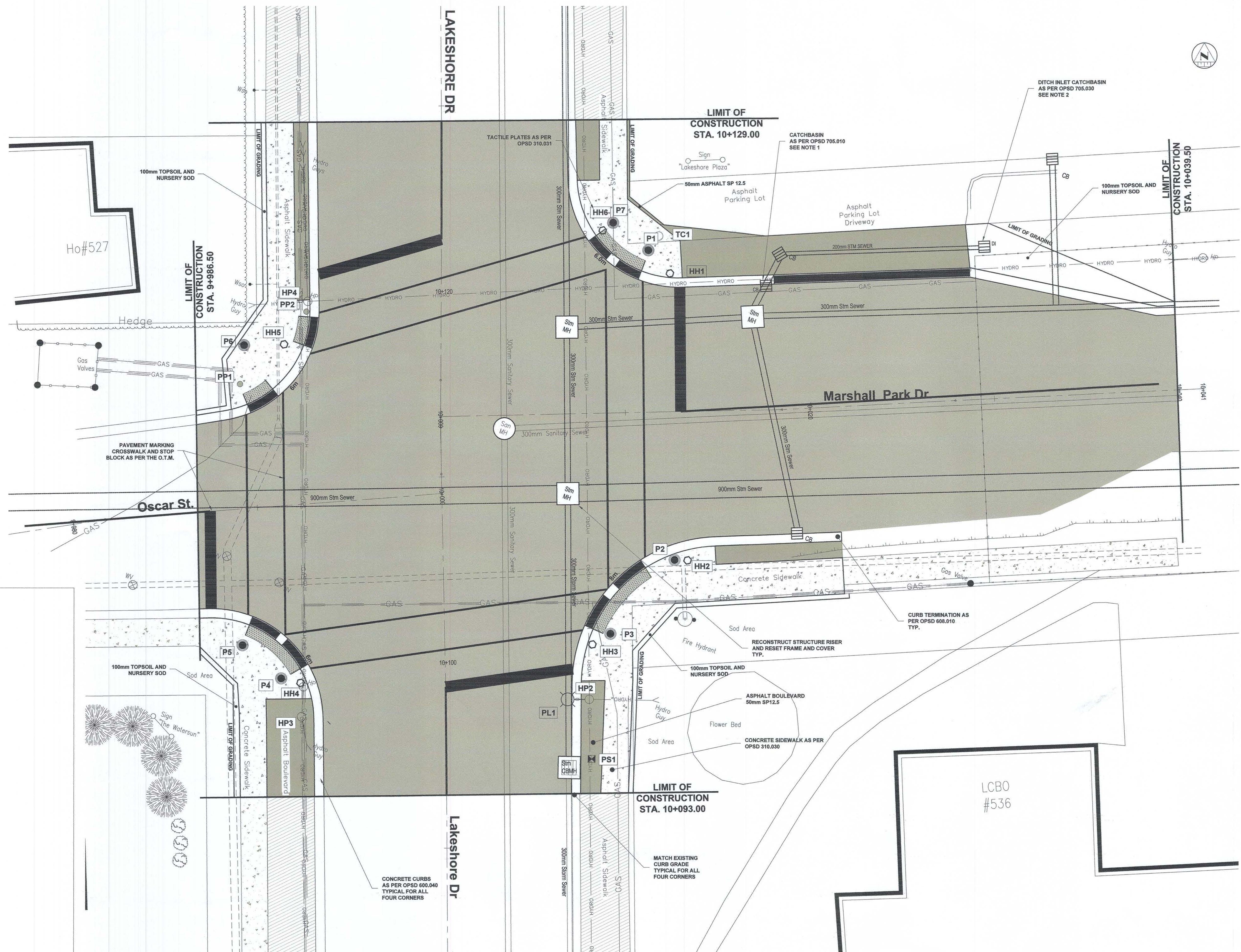
EXISTING

- HYDRO CABLE, AERIAL
BELL CABLE, BURIED
GAS MAIN
WATERMAIN
WATERVALVE
EXISTING HYDRO POLE TO REMAIN

PROPOSED

- HP#x HYDRO POLE #x
HH#x HAND HOLD #x
SMA#x SIGNAL MAST ARM #x
TC#x TRAFFIC CONTROLLER #x
PS#x POWER SUPPLY #x
PL#x POLE LUMINAIRES #x
P#x TRAFFIC SIGNAL POLE #x

- LIMIT OF ASPHALT
50mm SP 12.5
TACTILE PLATE SURFACE
LIMIT OF CONCRETE SIDEWALK
CONCRETE CURB DROP LOCATION
OPSD 310.030
PAVEMENT MARKING 10cm
PEDESTRIAN CROSSWALK
PAVEMENT MARKING 60cm
STOP BLOCK



KEY PLAN

GENERAL NOTES

1. THE UTILITIES INFORMATION CONTAINED ON THIS DRAWING MAY BE BASED UPON DATA PROVIDED BY OTHERS AND MAY NOT HAVE BEEN VERIFIED BY EITHER AS-CONSTRUCTED DRAWINGS OR AN ONTARIO LAND SURVEYOR. THE CITY OF NORTH BAY CANNOT ACCEPT RESPONSIBILITY FOR ERRORS OR OMISSIONS ON ANY INFORMATION SHOWN HEREIN. FIELD VERIFICATION, LAND SURVEYS OR EXCAVATION (WITH CITY APPROVALS) MAY BE REQUIRED TO DETERMINE ACTUAL LOCATION OF ANY AND ALL UTILITIES OR PROPERTY LINES.
2. REFER TO TRAFFIC SIGNAL DWG T-1 FOR TRAFFIC SIGNAL DRAWING LEGEND.
3. CONTRACTOR TO REMOVE AND DISPOSE POLE CONCRETE FOUNDATION, HANDHOLES AND MISCELLANEOUS WIRE AS DETAILED ON DRAWINGS.
4. CONTRACTOR TO COORDINATE WITH CITY OF NORTH BAY TRAFFIC DEPARTMENT PRIOR TO SALVAGING STEEL POLES, TRAFFIC SIGNAL HEADS, MAST ARMS, PED. HEADS AND TRAFFIC SIGNAL CONTROLLER. REMOVALS TO BE TURNED OVER TO THE CITY.

REVISIONS

No.	Date	By	Description
1	FEB 2025	DPN	Issued for 30% REVIEW
2	MAR 2025	DPN	Issued for 60% REVIEW
3	APR 2025	DPN	Issued for 90% REVIEW
4	JUN 17 2025	GWC	Issued for FINAL REVIEW
5	JUN 20 2025	GWC	Issued for TENDER

Professional Engineers
Ontario
Limited Licensee
Name: G.I. McCrank
Number: 100132091
Category: CIVIL: Roads/Sewers/Watermain
Limitations:
This licence is subject to the limitations as detailed on the certificate.
Association of Professional Engineers of Ontario



**LAKESHORE DR. AND
MARSHAL PARK DR.
INTERSECTION
IMPROVEMENTS**
TENDER 2025-69

TRAFFIC SIGNAL

**New Construction
Civil Works**

Designer: D.P.N.	Checked by: G.M./D.K.J.
Date: Mar. 18, 2025	Approved by:
Scale 1:75 1.0 0 2.5	Drawing Number: T-2
Drawing Set: 3 of 8	

NOTES:

1. THE AUDIBLE PEDESTRIAN SIGNAL STATIONS ARE TO BE MOUNTED 1.1m ABOVE THE GROUND IN THE LOCATIONS INDICATED ON THE DRAWING. AN INSTRUCTION SIGN SHALL BE MOUNTED IMMEDIATELY ABOVE EACH PUSH BUTTON. THE INSTRUCTION SIGN WILL BE SUPPLIED BY THE CONTRACTOR AS INDICATED ON CONTRACT DRAWINGS.
2. INSTALL OPTICAL PRE-EMPTION DETECTORS AS DETAILED ON POLES IN ACCORDANCE WITH SHEET D2, STANDARD DRAWING E-3.17.
3. ALL CONNECTIONS FOR THE BURIED CABLE ARE TO BE MADE IN THE HANDHOLE OR POLE ACCESS LOCATIONS.
4. PROVIDE TEMPORARY FOUR WAY STOPS SIGNS DURING REMOVAL AND CONSTRUCTION OF NEW SIGNALS. ENSURE ALL TRAFFIC CONTROL COMPLIES WITH OTM BOOK 7.
5. THE CONTRACTOR IS TO CONTACT NORTH BAY HYDRO FOR ALL TEMPORARY CONNECTIONS TO AND OR DISCONNECTIONS FROM POWER. INSTALLATION OF THE POWER SUPPLY AND THE POWER CONNECTION MUST BE COMPLETED EARLY IN THE CONTRACT TO ENSURE THERE IS NO DELAY TO THE TRAFFIC SIGNAL AND/OR ILLUMINATION ACTIVATION.
6. WHERE PROPOSED DUCT WILL CONFLICT WITH THE EXISTING 150mm Ø SUBDRAIN, ADJUST THE BURIAL DEPTH OF THE DUCT.
7. CONTRACTOR TO LOCATE ALL UNDERGROUND UTILITIES PRIOR TO EXCAVATING TO ENSURE NO CONFLICT.
8. TRAFFIC POLES SHALL BE INSTALLED AS PER OPSD 2215.03 WITH NON FRANGIBLE BASE.
9. SEE TYPICAL TRENCH DETAIL FOR RESTORATION OF UPPER AND LOWER BINDER ASPHALT.
10. CONTRACTOR WILL LAYOUT THE CURB RADIUS AND POLE FOUNDATION LOCATIONS FOR APPROVAL OR RELOCATION OF SIGNAL POLES.

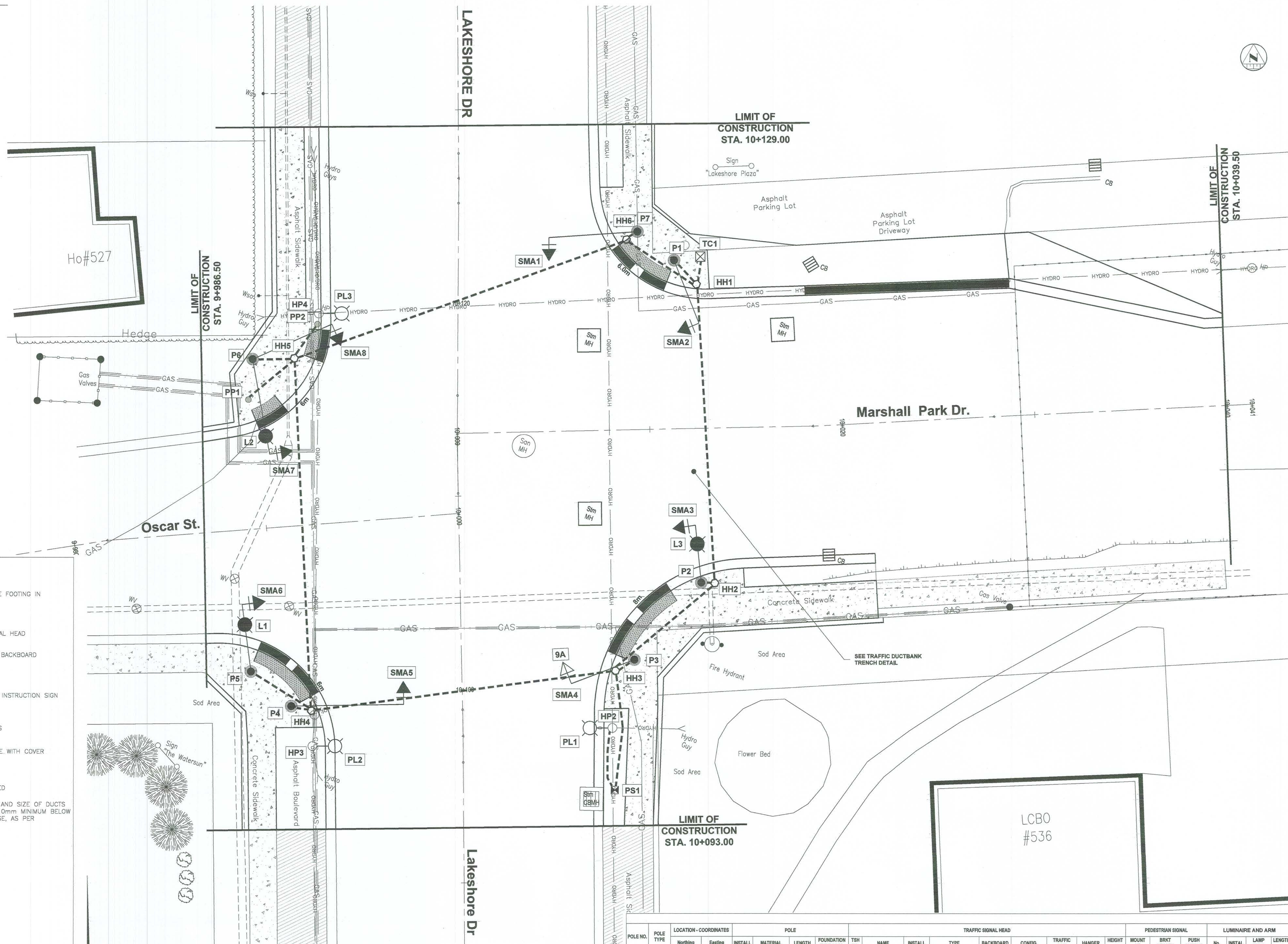
LEGEND:

PROPOSED

- STEEL POLE BASE MOUNTED ON CONCRETE FOOTING IN EARTH
- LUMINAIRE AND BRACKET
- HIGHWAY TYPE LED PRIMARY TRAFFIC SIGNAL HEAD WITH BACKBOARD AND MAST ARM
- SPECIAL TYPE TRAFFIC SIGNAL HEAD WITH BACKBOARD AND MAST ARM (AS NOTED)
- LED PEDESTRIAN SIGNAL HEAD
- AUDIBLE PEDESTRIAN SIGNAL STATION AND INSTRUCTION SIGN
- PRE-EMPTION DETECTOR
- GROUND ROD, 19mm x 3.0m, x INDICATES NUMBER OF GROUND RODS
- ELECTRICAL HANDHOLE, PRECAST CONCRETE WITH COVER
- POWER SUPPLY EQUIPMENT
- TRAFFIC SIGNAL CONTROLLER, PAD MOUNTED
- DIRECT BURIED RIGID PVC DUCT, NUMBER AND SIZE OF DUCTS AS INDICATED ON CONTRACT DRAWINGS, 610mm MINIMUM BELOW FINISHED GRADE, UNLESS NOTED OTHERWISE, AS PER OPSD 2101.01
- PEDESTRIAN POLE #x
- SIGNAL MAST ARM #x
- TRAFFIC SIGNAL POLE #x
- ELECTRICAL HANDHOLE #x
- NORTH BAY HYDRO POLE TO REMAIN #x
- TRAFFIC SIGNAL CONTROLLER #x
- POLE LUMINAIRE #x
- TRAFFIC SIGNAL POLE #x
- TACTILE PLATE SURFACE
- LIMIT OF CONCRETE SIDEWALK
- CONCRETE CURB DROP LOCATION OPSD 310.030

EXISTING

- HYDRO CABLE, AERIAL
- BELL CABLE, BURIED
- GAS MAIN, WATERMAIN
- WATERVALVE
- EXISTING HYDRO POLE TO REMAIN



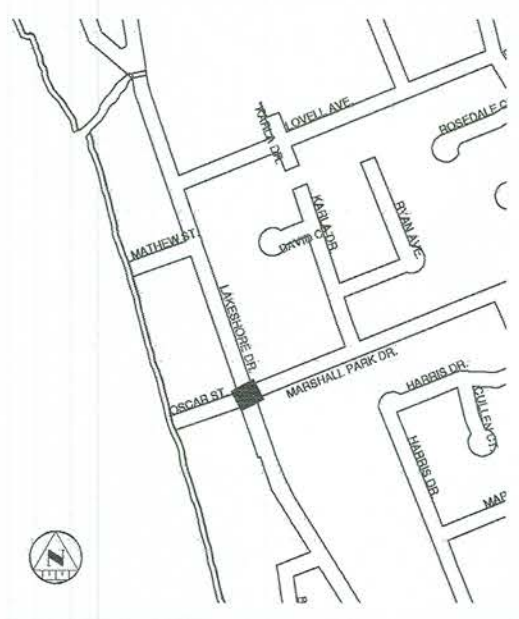
SUMMARY OF ELECTRICAL HANDHOLES

HH NO.	LOCATION - COORDINATES		CHAMBER			GROUND
	Northing	Easting	INSTALL	MATERIAL	DIAMETER	
1	619908.522	5125531.457	NEW	CONCRETE	675mm	1
2	619913.299	5125516.289	NEW	CONCRETE	675mm	1
3	619911.005	5125511.184	NEW	CONCRETE	450mm	1
4	619896.719	5125504.144	NEW	CONCRETE	450mm	1
5	619889.992	5125521.115	NEW	CONCRETE	450mm	1
6	619904.336	5125532.478	NEW	CONCRETE	450mm	1

SUMMARY OF HYDRO POLE LUMINAIRES

NO.	EXISTING			LUMINAIRE AND ARM	
	POLE NO.	INSTALL	LAMP TYPE	ARM LENGTH	mm
PL1	7243	-	-	-	-
PL2	7292	NEW	105W LED	3000	
PL3	7291	NEW	105W LED	3000	

POLE NO.	POLE TYPE	LOCATION - COORDINATES		POLE				TRAFFIC SIGNAL HEAD										PEDESTRIAN SIGNAL				LUMINAIRE AND ARM			
		Northing	Easting	INSTALL	MATERIAL	LENGTH	FOUNDATION TYPE	OPSD	TSH NO.	NAME	INSTALL	TYPE	BACKBOARD	CONFIG.	TRAFFIC ARM	HANGER	HEIGHT mm	MOUNT HT	BRKT LENGTH	PUSH BUTTON	No.	INSTALL	LAMP TYPE	LENGTH mm	
P1	E3.06	619907.024	5125532.254	NEW	GALV. SEC. STEEL	7000.000	2200.010	2	EB SECONDARY	NEW	OVERSIZE HIGHWAY	YES	300/300/300	3000mm	CUSHIONED	5000mm	2750mm	450mm	1	-	-	-	-		
P2	E3.06	619913.035	5125514.988	NEW	GALV. SEC. STEEL	7000.000	2200.010	3	EB PRIMARY	NEW	OVERSIZE HIGHWAY	YES	300/300/300	2400mm	CUSHIONED	5000mm	2750mm	450mm	1	L3	NEW	105W LED	1200		
P3	E3.06	619911.751	5125512.039	NEW	GALV. SEC. STEEL	10500.000	2200.010	4	SB SECONDARY	NEW	OVERSIZE HIGHWAY	YES	300/300/300	2400mm	CUSHIONED	5000mm	2750mm	450mm	1	-	-	-	-		
P4	E3.06	619895.852	5125504.035	NEW	GALV. SEC. STEEL	7000.000	2200.010	5	SB PRIMARY	NEW	OVERSIZE HWY SPEC. 10A	YES	300/300/300/300	4800mm	CUSHIONED	5000mm	2750mm	450mm	1	-	-	-	-		
P5	E3.06	619893.101	5125505.055	NEW	GALV. SEC. STEEL	7000.000	2200.010	6	WB SECONDARY	NEW	OVERSIZE HIGHWAY	YES	300/300/300	2400mm	CUSHIONED	5000mm	2750mm	450mm	1	L1	NEW	105W LED	3000		
P6	E3.06	619897.967	5125520.375	NEW	GALV. SEC. STEEL	7000.000	2200.010	7	WB PRIMARY	NEW	OVERSIZE HIGHWAY	YES	300/300/300	3700mm	CUSHIONED	5000mm	2750mm	450mm	1	L2	NEW	105W LED	3000		
P6								8	NB SECONDARY	NEW	OVERSIZE HIGHWAY	YES	300/300/300	3700mm	CUSHIONED	5000mm	2750mm	450mm	-	-	-	-	-		
P7	E3.06	619904.741	5125533.049	NEW	GALV. SEC. STEEL	10500.000	2200.010	1	NB PRIMARY	NEW	OVERSIZE HIGHWAY	YES	300/300/300	3700mm	CUSHIONED	5000mm	2750mm	450mm	-	-	-	-	-		
PP1	OPSD 2558.000	619906.435	5125516.322	NEW	ALUMINUM	1500.000	2200.041	-	-	-	-	-	-	-	-	-	-	-	1	-	-	-	-		
PP2	OPSD 2558.000	619905.574	5125523.176	NEW	ALUMINUM	1500.000	2200.041	-	-	-	-	-	-	-	-	-	-	-	1	-	-	-	-		



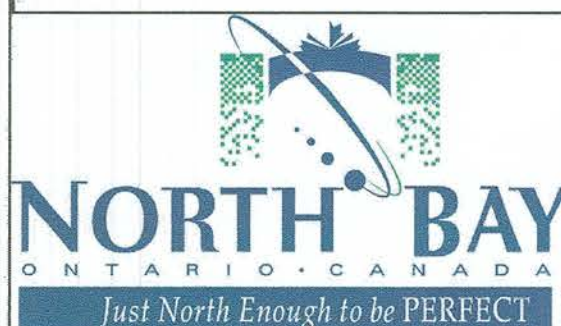
KEY PLAN

GENERAL NOTES

1. THE UTILITIES INFORMATION CONTAINED ON THIS DRAWING MAY BE BASED UPON DATA PROVIDED BY OTHERS AND MAY NOT HAVE BEEN VERIFIED BY EITHER AS-CONSTRUCTED DRAWINGS OR AN ONTARIO LAND SURVEYOR. THE CITY OF NORTH BAY CANNOT ACCEPT RESPONSIBILITY FOR ERRORS OR OMISSIONS ON ANY INFORMATION SHOWN HEREIN. FIELD VERIFICATION, LAND SURVEYS OR EXCAVATION (WITH CITY APPROVALS) MAY BE REQUIRED TO DETERMINE ACTUAL LOCATION OF ANY AND ALL UTILITIES OR PROPERTY LINES.
2. REFER TO TRAFFIC SIGNAL DWG T-1 FOR TRAFFIC SIGNAL DRAWING LEGEND.
3. CONTRACTOR TO REMOVE AND DISPOSE POLE CONCRETE FOUNDATION, HANDHOLES AND MISCELLANEOUS WIRE AS DETAILED ON DRAWINGS.
4. CONTRACTOR TO COORDINATE WITH CITY OF NORTH BAY TRAFFIC DEPARTMENT PRIOR TO SALVAGING STEEL POLES, TRAFFIC SIGNAL HEADS, MAST ARMS, PED. HEADS AND TRAFFIC SIGNAL CONTROLLER. REMOVALS TO BE TURNED OVER TO THE CITY AND DELIVERED TO PUBLIC WORKS YARD.

REVISIONS

No.	Date	By	Description
1	FEB 2025	DPN	Issued for 90% REVIEW
2	MAR 2025	DPN	Issued for 60% REVIEW
3	APR 2025	DPN	Issued for 90% REVIEW
4	JUN 17 2025	GWC	Issued for FINAL REVIEW
5	JUN 20 2025	GWC	Issued for TENDER

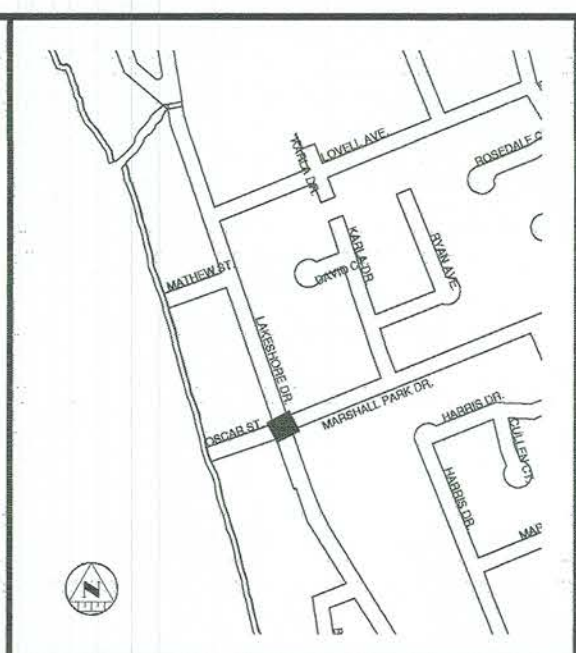
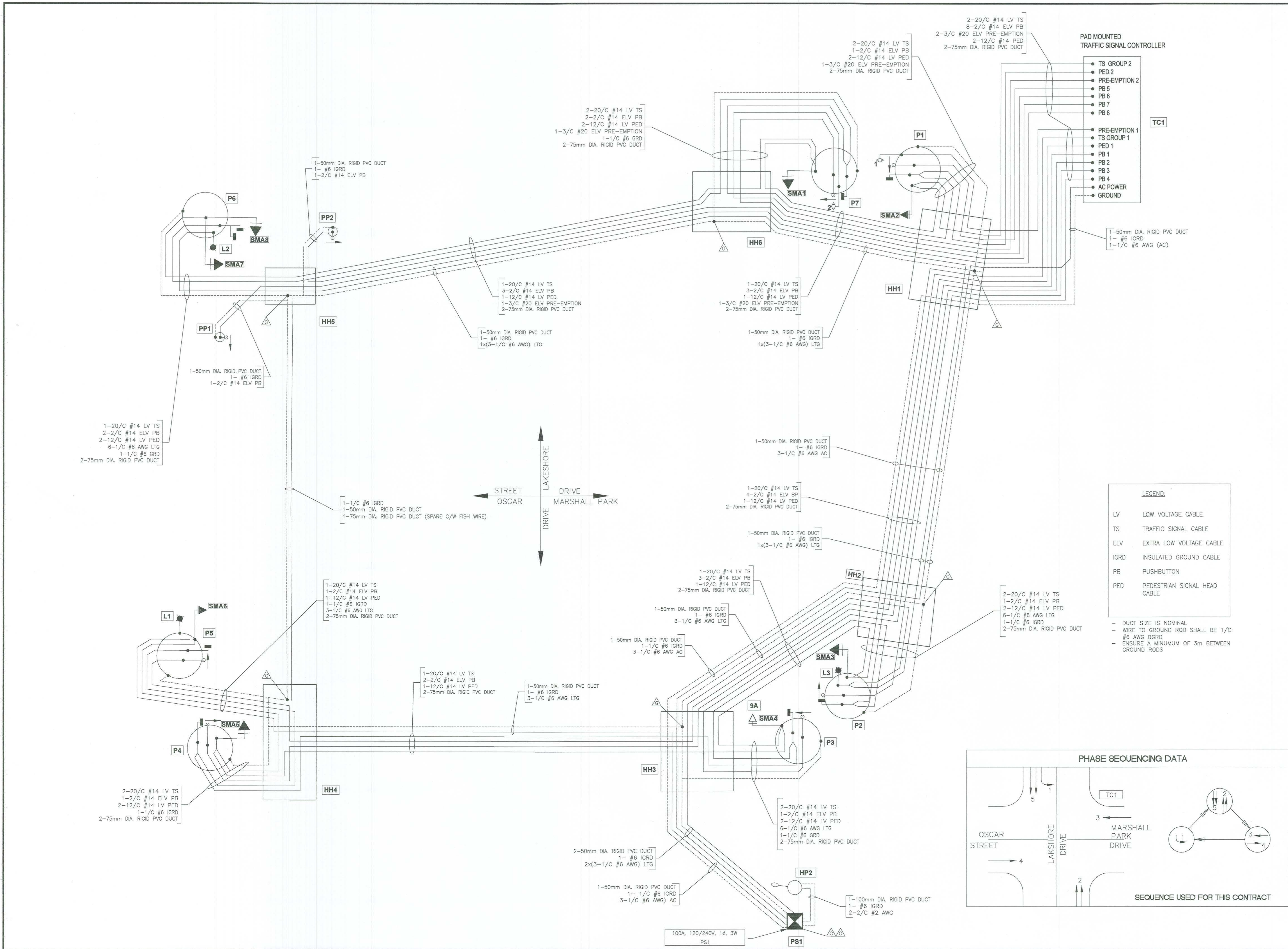


LAKESHORE DR. AND MARSHAL PARK DR. INTERSECTION IMPROVEMENTS TENDER 2025-69

TRAFFIC SIGNAL

Traffic Signal New Construction and Layout

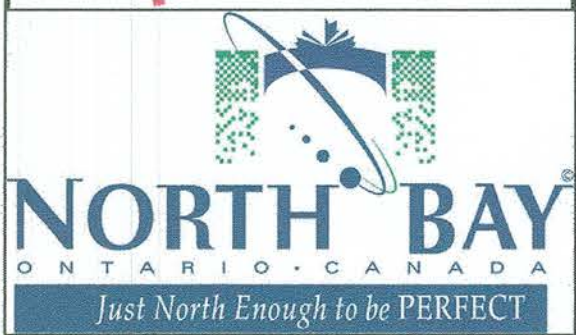
Designer:	D.P.N.	Checked by:	G.M./D.K.J.
Date:	Mar. 18, 2025	Approved by:	
Scale	1:75		
Drawing Number:	T-3	Drawing Set:	4 of 8



- KEY PLAN**
- GENERAL NOTES**
- THE UTILITIES INFORMATION CONTAINED ON THIS DRAWING MAY BE BASED UPON DATA PROVIDED BY OTHERS AND MAY NOT HAVE BEEN VERIFIED BY EITHER AS-CONSTRUCTED DRAWINGS OR AN ONTARIO LAND SURVEYOR. THE CITY OF NORTH BAY CANNOT ACCEPT RESPONSIBILITY FOR ERRORS OR OMISSIONS ON ANY INFORMATION SHOWN HEREIN. FIELD VERIFICATION, LAND SURVEYS OR EXCAVATION (WITH CITY APPROVALS) MAY BE REQUIRED TO DETERMINE ACTUAL LOCATION OF ANY AND ALL UTILITIES OR PROPERTY LINES.
 - REFER TO TRAFFIC SIGNAL DWG T-1 FOR TRAFFIC SIGNAL DRAWING LEGEND.
 - CONTRACTOR TO REMOVE AND DISPOSE POLE CONCRETE FOUNDATION, HANDHOLES AND MISCELLANEOUS WIRE AS DETAILED ON DRAWINGS.
 - CONTRACTOR TO COORDINATE WITH CITY OF NORTH BAY TRAFFIC DEPARTMENT PRIOR TO SALVAGING STEEL POLES, TRAFFIC SIGNAL HEADS, MAST ARMS, PED. HEADS AND TRAFFIC SIGNAL CONTROLLER. REMOVALS TO BE TURNED OVER TO THE CITY.

REVISIONS

No.	Date	By	Description
1	FEB 2025	DPN	Issued for 30% REVIEW
2	MAR 2025	DPN	Issued for 60% REVIEW
3	APR 2025	DPN	Issued for 80% REVIEW
4	JUN 17 2025	GWC	Issued for FINAL REVIEW
5	JUN 20 2025	GWC	Issued for TENDER

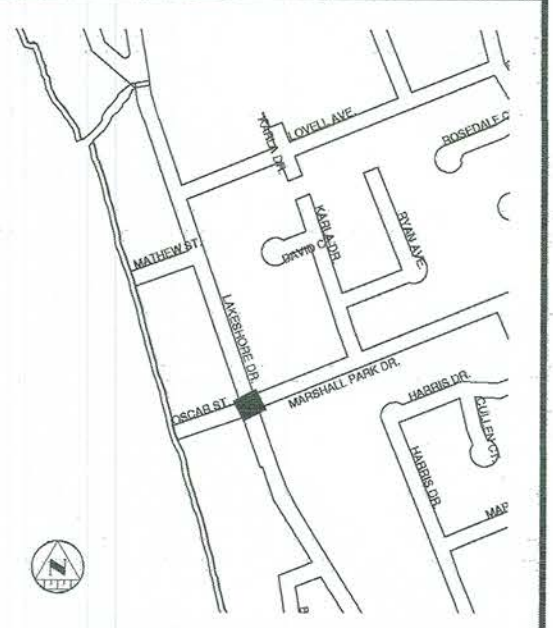
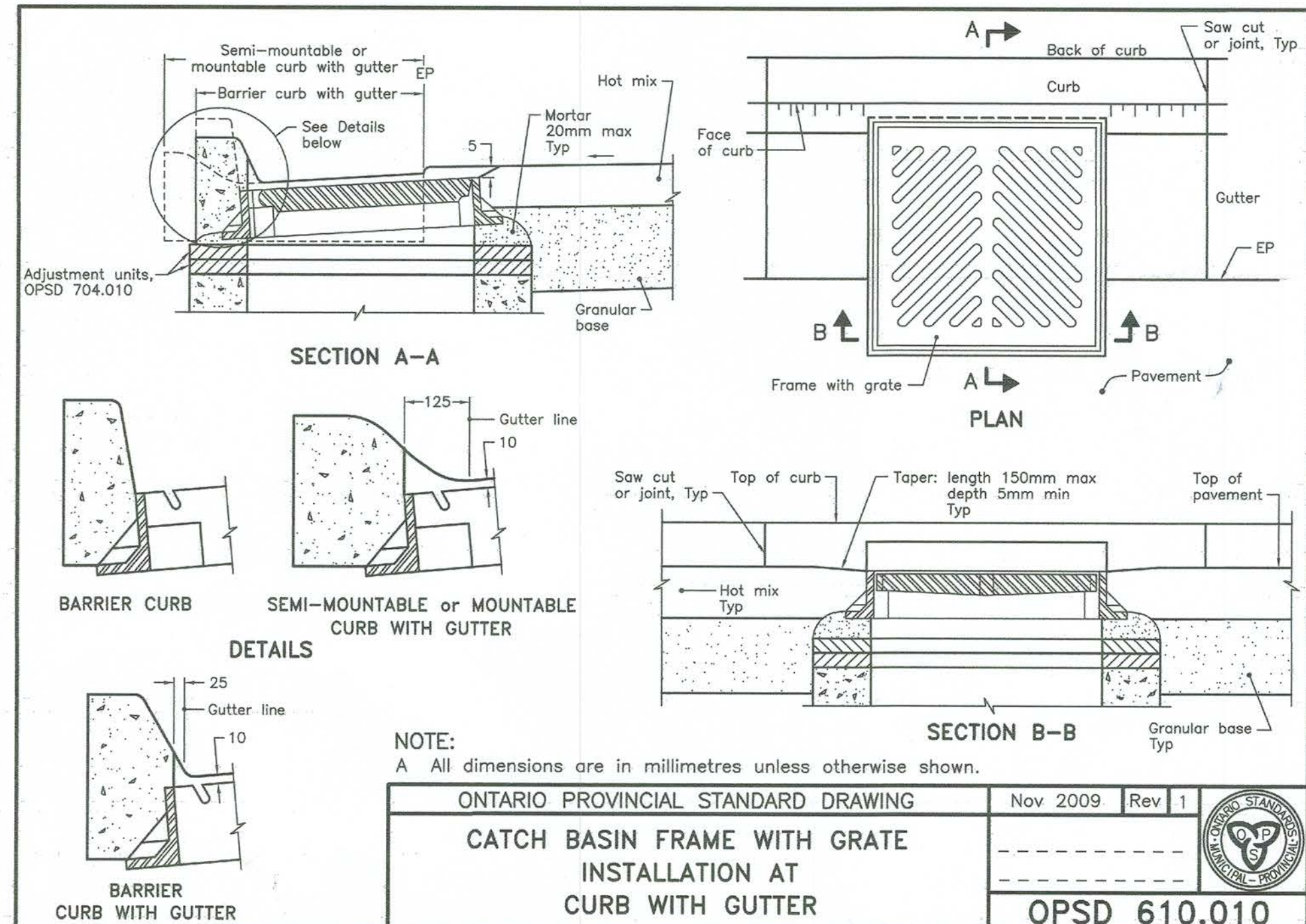
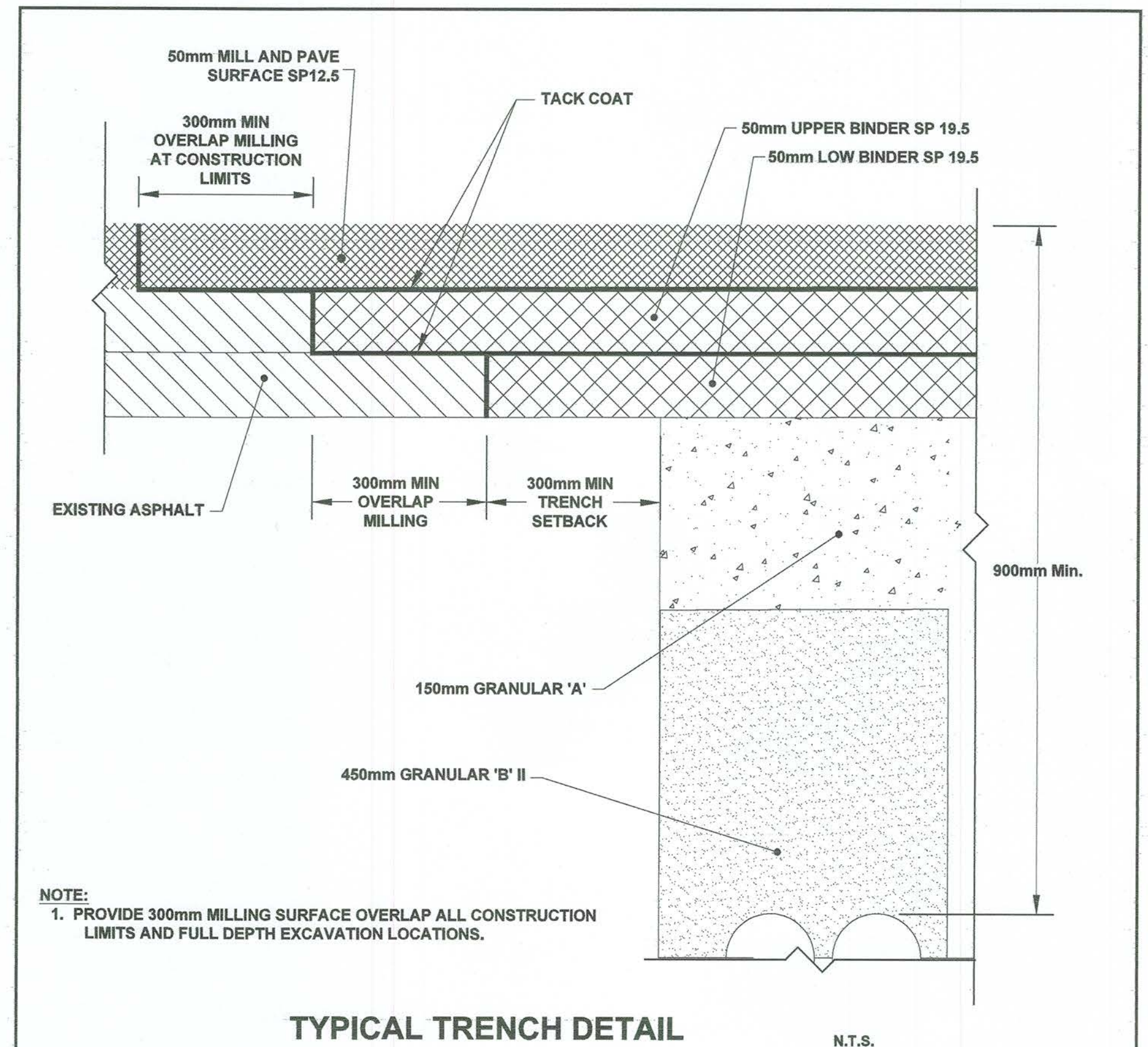
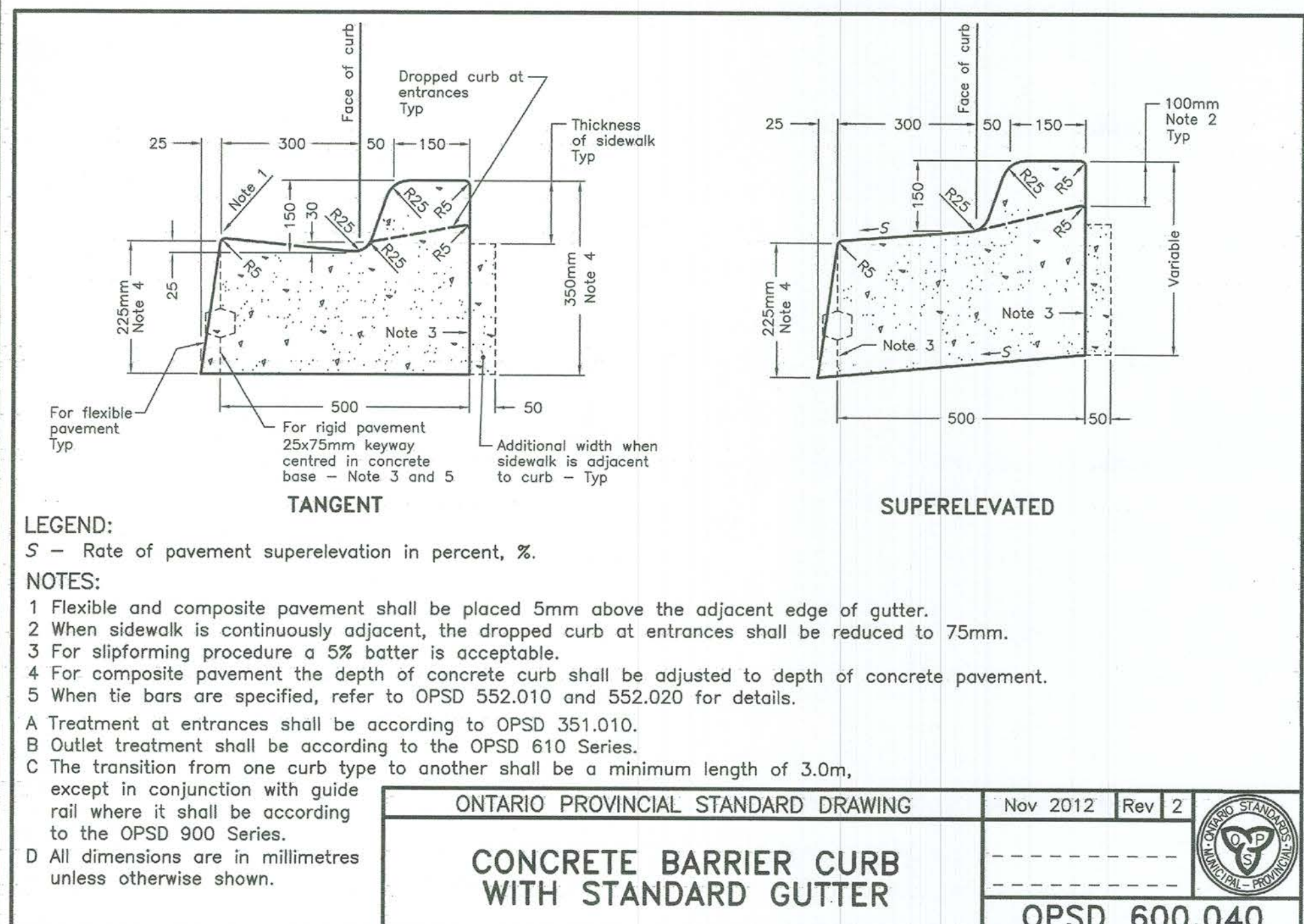
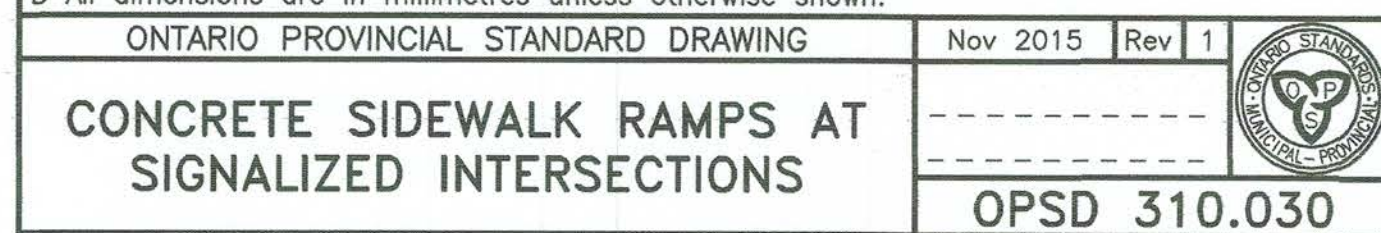
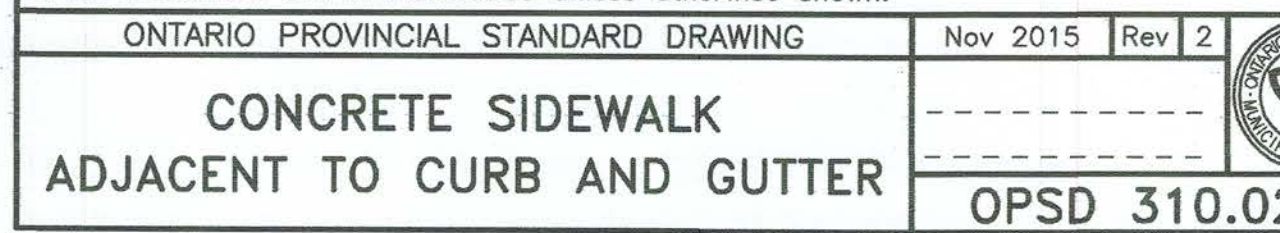
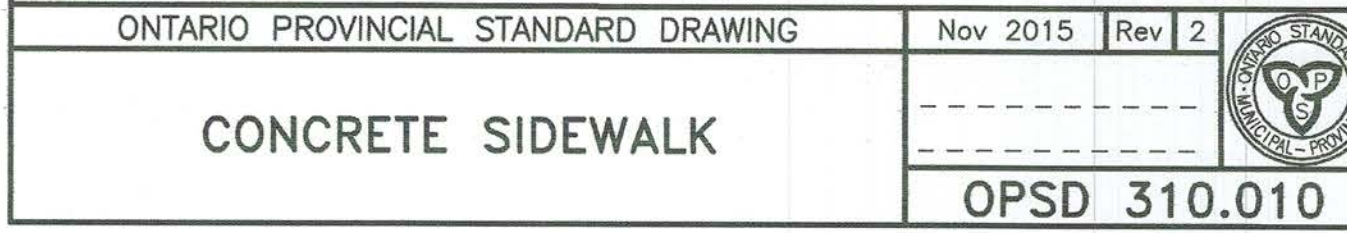


LAKESHORE DR. AND MARSHAL PARK DR. INTERSECTION IMPROVEMENTS
TENDER 2025-69

TRAFFIC SIGNAL

Traffic Signal Wiring Diagram

Designer:	D.P.N.	Checked by:	G.M./D.K.J.
Date:	Mar. 18, 2025	Approved by:	
Scale:	N.T.S.		
Drawing Number:	TW-1	Drawing Set:	5 of 8



KEY PLAN

GENERAL NOTES

1. THE UTILITIES INFORMATION CONTAINED ON THIS DRAWING MAY BE BASED UPON DATA PROVIDED BY OTHERS AND MAY NOT HAVE BEEN VERIFIED BY EITHER:
AS-CONSTRUCTED DRAWINGS OR AN ANTI-CORROSION SURVEYOR. THE CITY OF NORTH BAY CANNOT ACCEPT RESPONSIBILITY FOR ERRORS OR OMISSIONS ON ANY INFORMATION SHOWN HEREIN. FIELD VERIFICATION, LAND SURVEYS OR EXCAVATION (WITH CITY APPROVALS) MAY BE REQUIRED TO DETERMINE ACTUAL LOCATION OF ANY AND ALL UTILITIES OR PROPERTY LINES.
2. REFER TO TRAFFIC SIGNAL DWG T-1 FOR TRAFFIC SIGNAL DRAWING LEGEND.
3. CONTRACTOR TO REMOVE AND DISPOSE POLE CONCRETE FOUNDATION, HANDHOLES AND MISCELLANEOUS WIRE AS DETAILED ON DRAWINGS.
4. CONTRACTOR TO COORDINATE WITH CITY OF NORTH BAY TRAFFIC DEPARTMENT PRIOR TO SALVAGING STEEL POLES, TRAFFIC SIGNAL HEADS, MAST ARMS, PED. HEADS AND TRAFFIC SIGNAL CONTROLLER. REMOVALS TO BE TURNED OVER TO THE CITY.

REVISIONS

No.	Date	By	Description
1	FEB 2025	DPN	Issued for 30% REVIEW
2	MAR 2025	DPN	Issued for 60% REVIEW
3	APR 2025	DPN	Issued for 90% REVIEW
4	JUN 17 2025	GWC	Issued for FINAL REVIEW
5	JUN 20 2025	GWC	Issued for TENDER

 Professional Engineers
Ontario

Limited Licensee

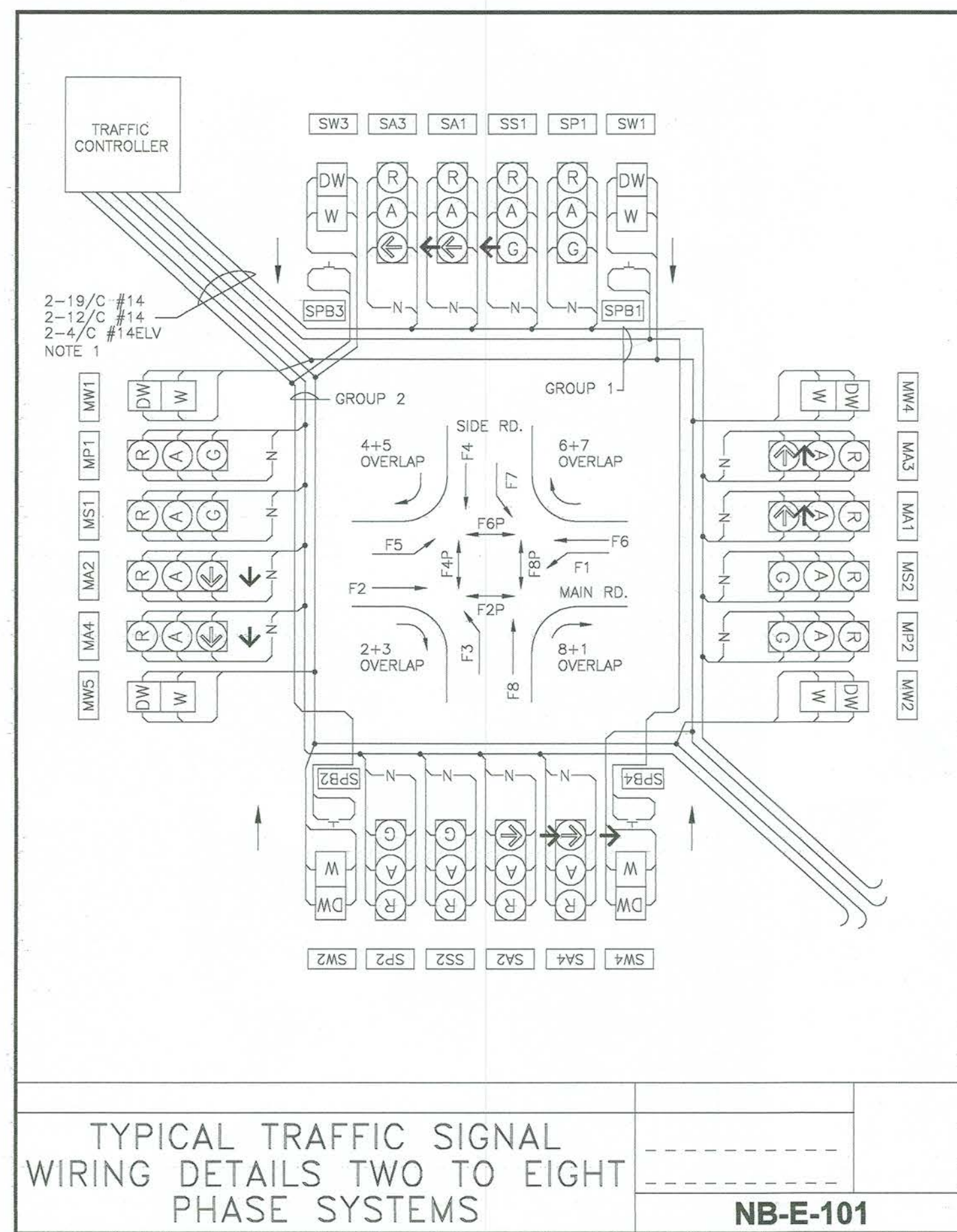
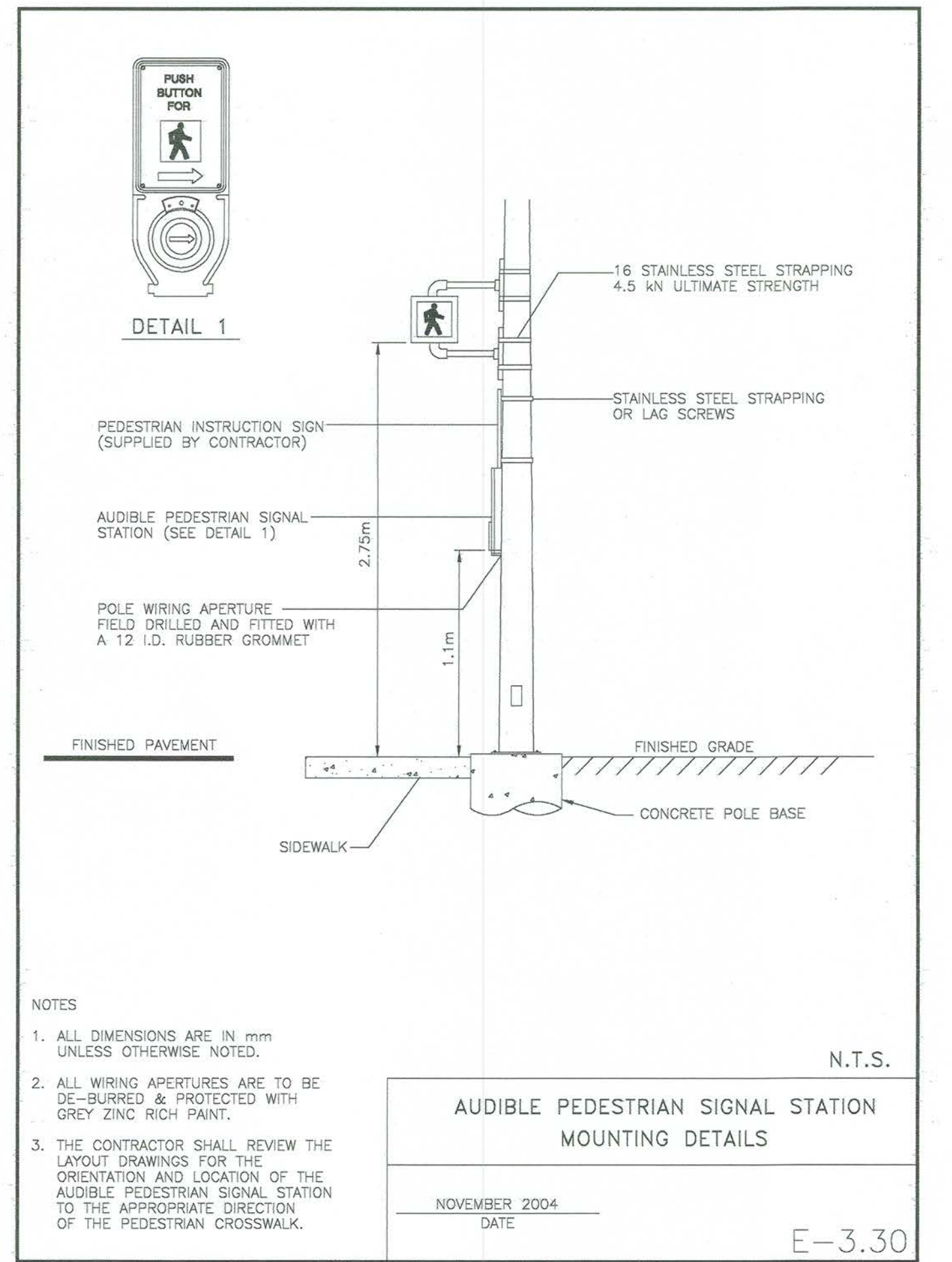
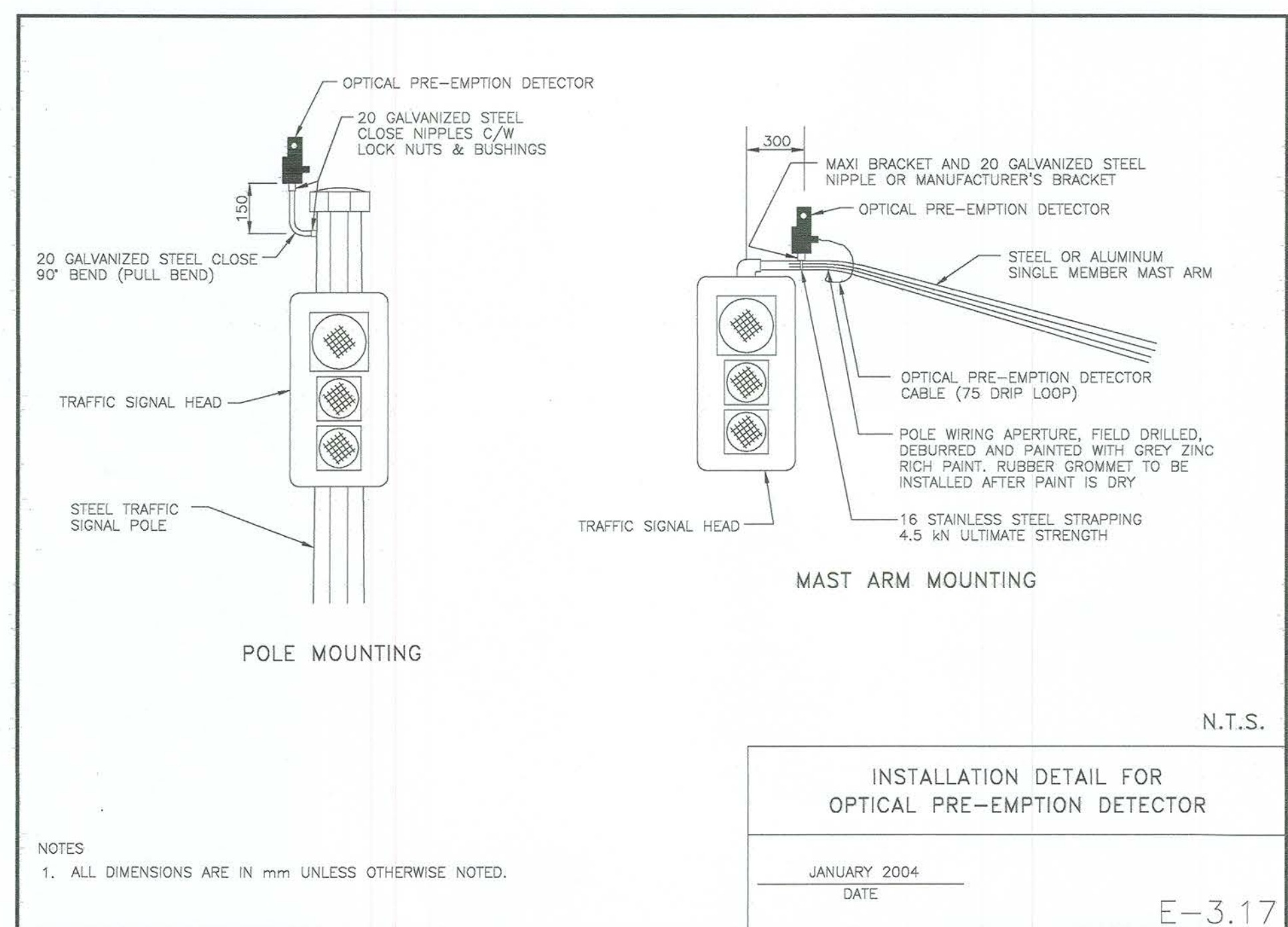
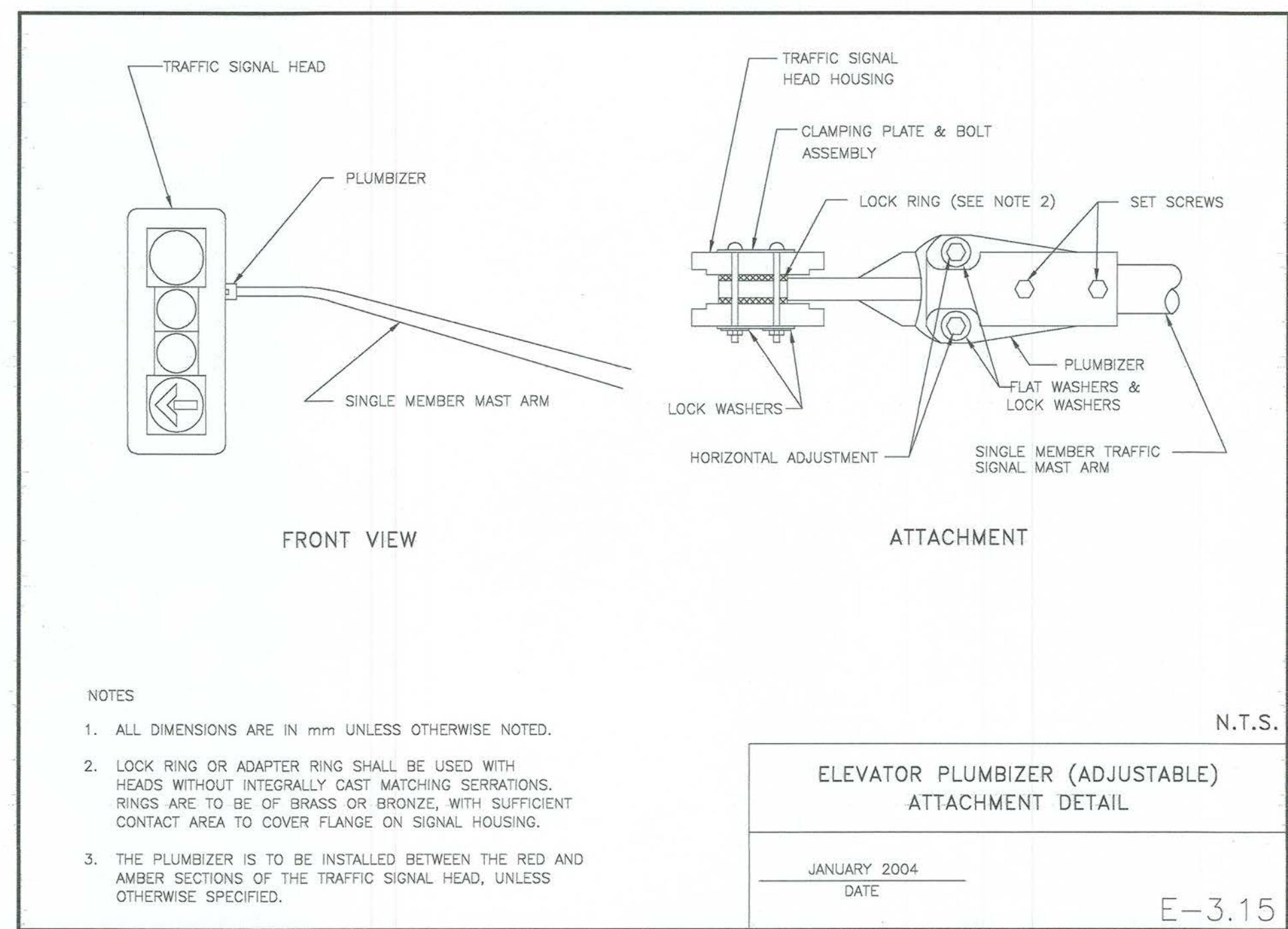
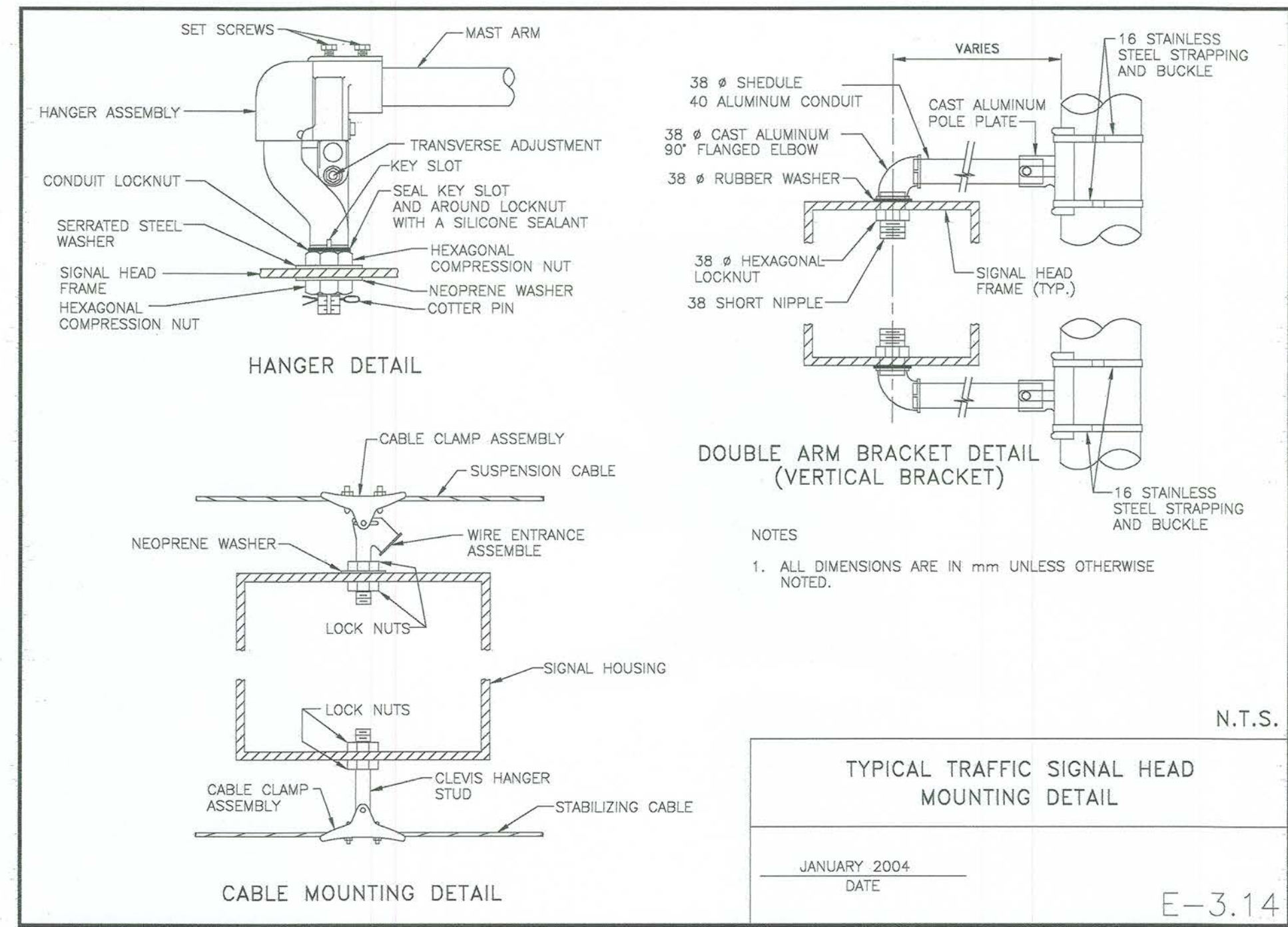
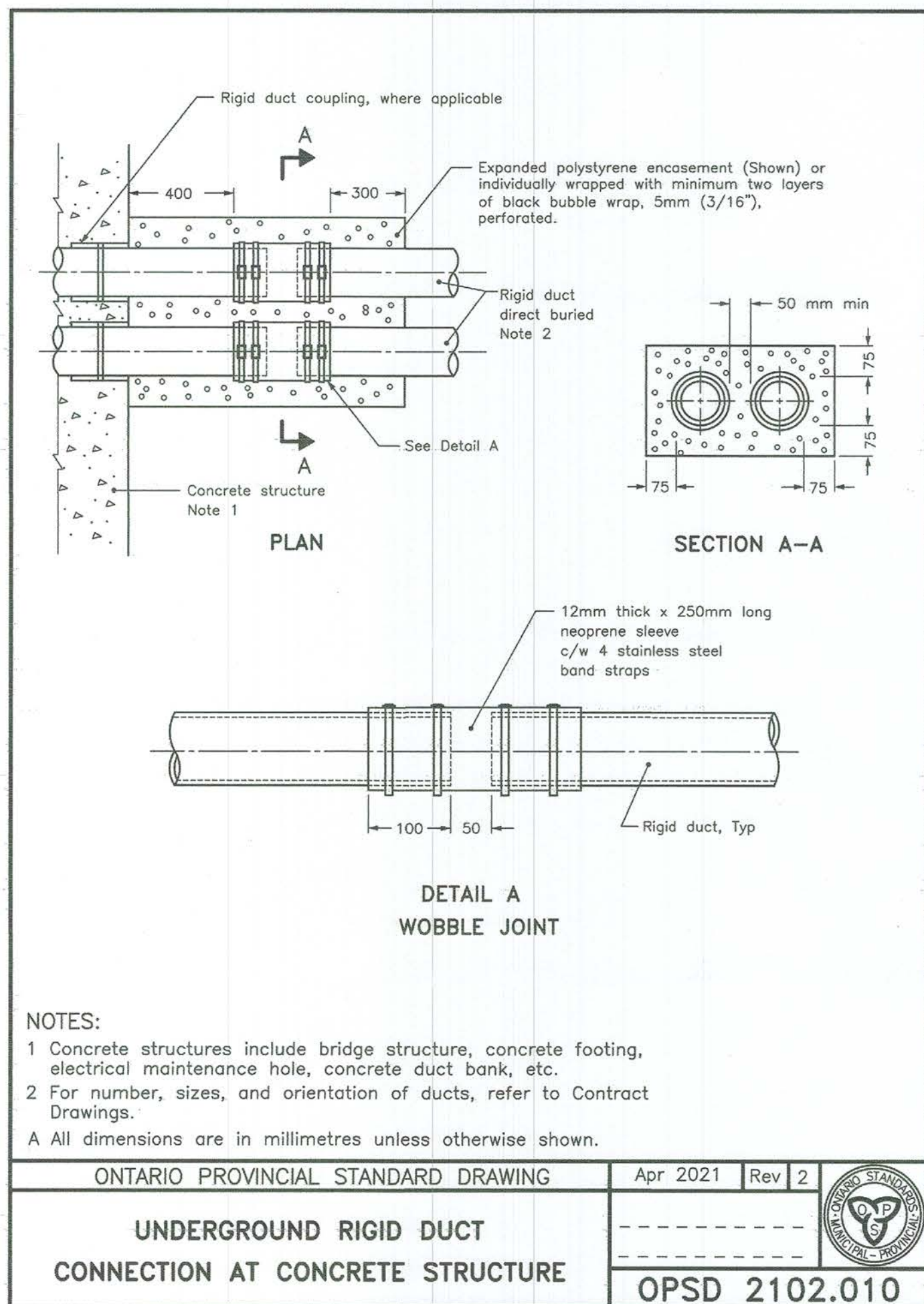
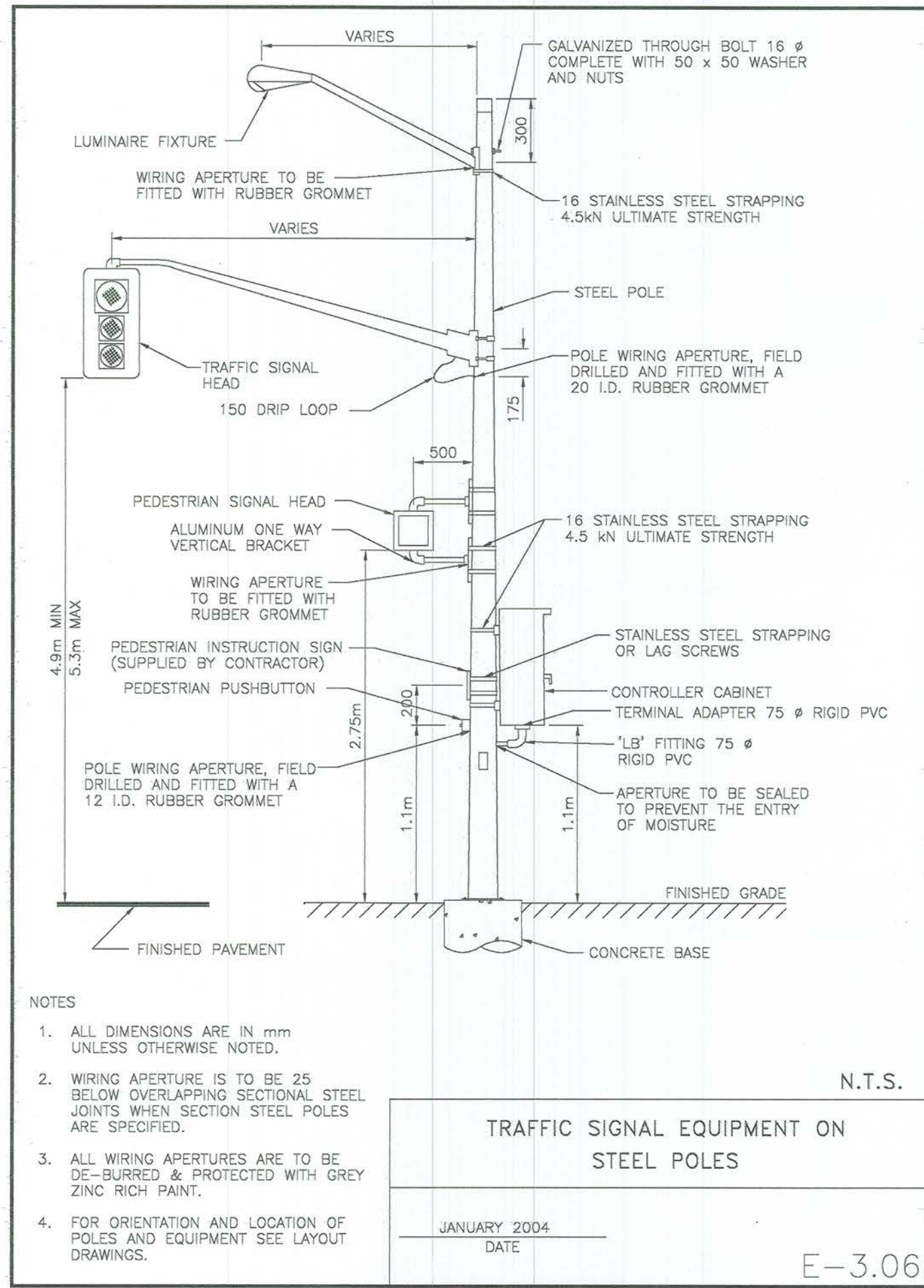
Name: G.J. MCCRANK *June 17/2005*
Number: 100132091
Category: CIVIL: Roads/Sewers/Watermain
Limitations:
This licence is subject to the limitations as detailed
on the certificate.
Association of Professional Engineers of Ontario
[Signature]

LAKESHORE DR. AND MARSHAL PARK DR. INTERSECTION IMPROVEMENTS

TRAFFIC SIGNAL

Road Work Details

Designer: D.P.N.	Checked by: G.M./D.K.J.
Date: Mar. 18, 2025	Approved by:
Scale N.T.S.	
Drawing Number: D-1	Drawing Set: 6 of 8



KEY PLAN

GENERAL NOTES

1. THE UTILITIES INFORMATION CONTAINED ON THIS DRAWING MAY BE BASED UPON DATA PROVIDED BY OTHERS AND MAY NOT HAVE BEEN VERIFIED BY EITHER AS-CONSTRUCTED DRAWINGS OR AN ONTARIO LAND SURVEYOR. THE CITY OF NORTH BAY CANNOT ACCEPT RESPONSIBILITY FOR ERRORS OR OMISSIONS ON ANY INFORMATION SHOWN HEREIN. FIELD VERIFICATION, LAND SURVEYS OR EXCAVATION (WITH CITY APPROVALS) MAY BE REQUIRED TO DETERMINE ACTUAL LOCATION OF ANY AND ALL UTILITIES OR PROPERTY LINES.
2. REFER TO TRAFFIC SIGNAL DWG T-1 FOR TRAFFIC SIGNAL DRAWING LEGEND.
3. CONTRACTOR TO REMOVE AND DISPOSE POLE CONCRETE FOUNDATION, HANDHOLES AND MISCELLANEOUS WIRE AS DETAILED ON DRAWINGS.
4. CONTRACTOR TO COORDINATE WITH CITY OF NORTH BAY TRAFFIC DEPARTMENT PRIOR TO SALVAGING STEEL POLES, TRAFFIC SIGNAL HEADS, MAST ARMS, PED. HEADS AND TRAFFIC SIGNAL CONTROLLER. REMOVALS TO BE TURNED OVER TO THE CITY.

REVISIONS

No.	Date	By	Description
1	FEB 2025	DPN	Issued for 30% REVIEW
2	MAR 2025	DPN	Issued for 60% REVIEW
3	APR 2025	DPN	Issued for 80% REVIEW
4	JUN 17 2025	GWC	Issued for FINAL REVIEW
5	JUN 20 2025	GWC	Issued for TENDER

LAKESHORE DR. AND MARSHAL PARK DR. INTERSECTION IMPROVEMENTS

TENDER 2025-69

TRAFFIC SIGNAL

Traffic Signal Equipment Details

Designer: D.P.N. Checked by: G.M./D.K.J.

Date: Mar. 18, 2025 Approved by:

Scale: N.T.S.

Drawing Number: D-2 Drawing Set: 7 of 8

