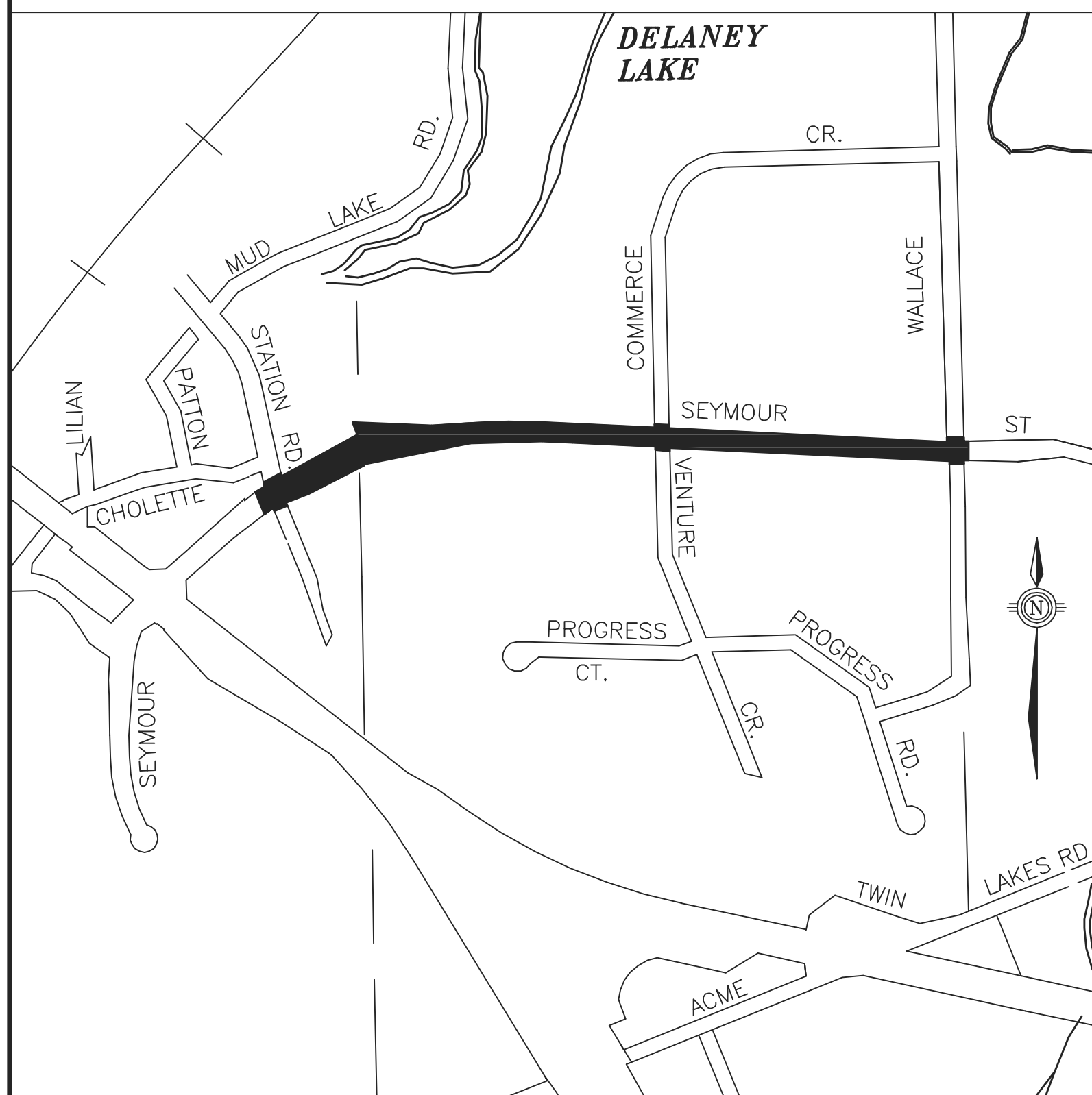
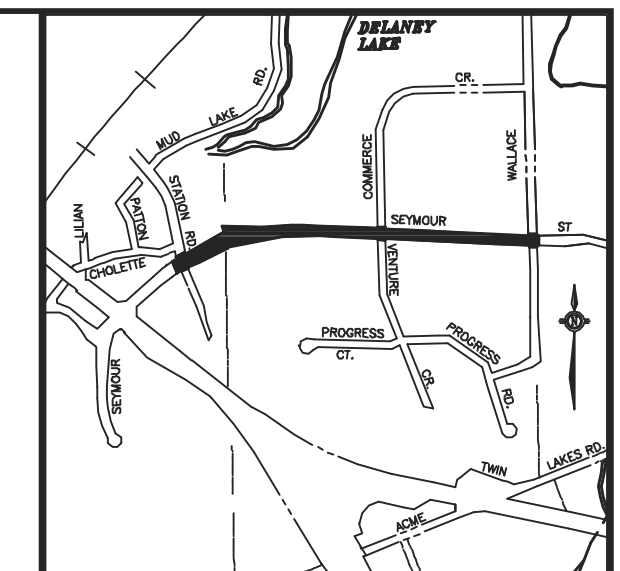
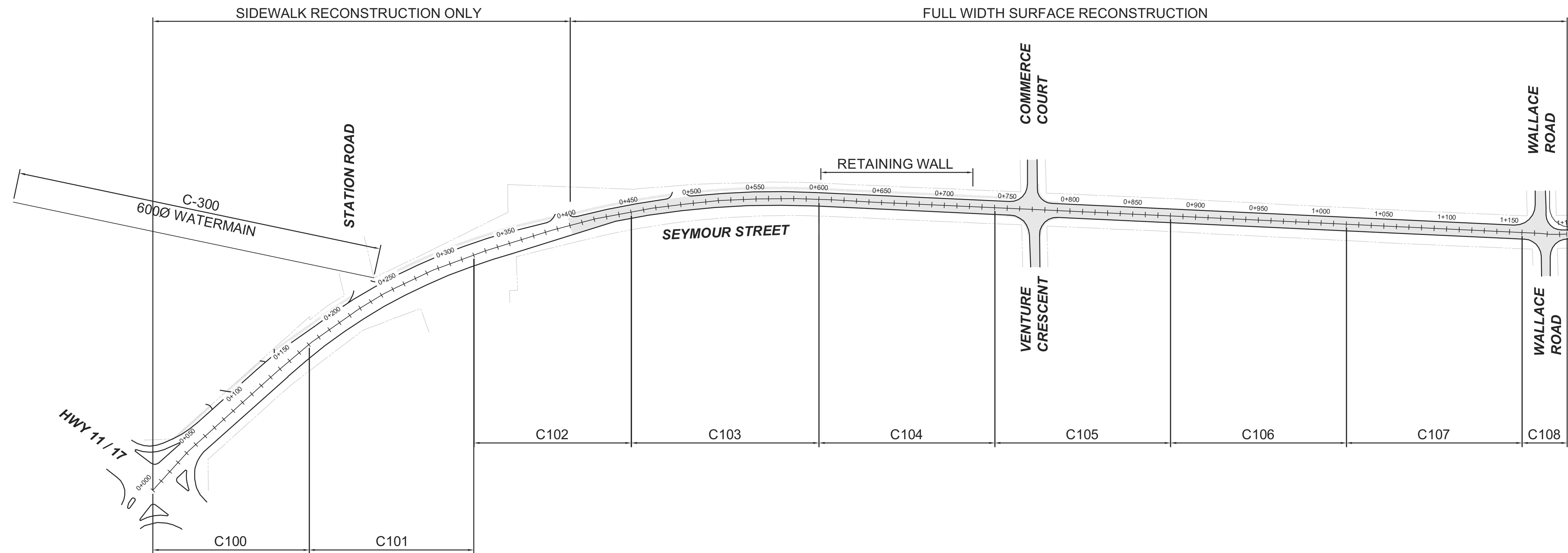


# The Corporation of the City of North Bay

## SEYMOUR STREET ENVIRONMENTAL ASSESSMENT & PRELIMINARY DESIGN



ISSUED FOR AGENCY REVIEW  
NOVEMBER 16, 2012



KEY PLAN

PRELIMINARY  
NOT FOR  
CONSTRUCTION  
16 NOV 2012

REVISIONS

no.	date	by	description
1.	9 AUG 2012	A	ISSUED FOR CLIENT REVIEW
2.	10 SEP 2012	B	ISSUED FOR PUBLIC INFORMATION CENTRE 1
3.	12 NOV 2012	C	ISSUED FOR CLIENT REVIEW
4.	16 NOV 2012	D	ISSUED FOR AGENCY REVIEW

DRAWING INDEX

ROAD CONSTRUCTION		
C-100	SEYMOUR STREET PLAN AND PROFILE	STA. 0+150 TO STA. 0+300
C-101	SEYMOUR STREET PLAN AND PROFILE	STA. 0+300 TO STA. 0+450
C-102	SEYMOUR STREET PLAN AND PROFILE	STA. 0+450 TO STA. 0+600
C-103	SEYMOUR STREET PLAN AND PROFILE	STA. 0+600 TO STA. 0+750
C-104	SEYMOUR STREET PLAN AND PROFILE	STA. 0+750 TO STA. 0+900
C-105	SEYMOUR STREET PLAN AND PROFILE	STA. 0+000 TO STA. 0+090
C-106	SEYMOUR STREET PLAN AND PROFILE	STA. 0+000 TO STA. 0+145
C-107	SEYMOUR STREET PLAN AND PROFILE	STA. 0+130 TO STA. 0+280
C-108	SEYMOUR STREET PLAN AND PROFILE	STA. 0+130 TO STA. 0+280

CONSTRUCTION DETAILS		
C-200	TYPICAL SECTIONS	
C-201	RETAINING WALL DETAIL	STA. 0+601 TO STA. 0+722

WATERMAIN CONSTRUCTION		
C-300	WATERMAIN INSTALLATION ON CHOLETTE ST.	

LEGEND

<b>SANITARY, STORM WATERMAIN</b>		<b>UTILITIES</b>	
— W —	EXISTING WATERMAIN	○ LS	EXISTING LIGHT STANDARD
- - - W - - -	PROPOSED WATERMAIN	○ HP	EXISTING HYDRO POLE
— SAN —	EXISTING SANITARY	○ GW	EXISTING GUY WIRE
- - - SAN - - -	PROPOSED SANITARY	○ HP.L	EXISTING HYDRO POLE w/ LIGHT
— ST —	EXISTING STORM	○ TP	EXISTING TRAFFIC LIGHT POLE
- - - ST - - -	PROPOSED STORM	○ HP.TL	EXISTING HYDRO POLE w/ TRAFFIC LIGHT POLE
● MH	EXISTING SANITARY MANHOLE	— G —	EXISTING GAS PIPE
○ MH	PROPOSED SANITARY MANHOLE	— OHB —	EXISTING OVERHEAD
● MH	EXISTING STORM MANHOLE	— UGB —	EXISTING BURIED
○ MH	PROPOSED STORM MANHOLE	— UGB —	EXISTING PEDESTAL
▨ CB	EXISTING CATCHBASIN	— UGB —	EXISTING MANHOLE
▨ CB	PROPOSED CATCHBASIN	— UGB —	EXISTING OPI
○ FH	EXISTING FIRE HYDRANT	○ B	EXISTING BELL POLE
○ VC	EXISTING VALVE CHAMBER	○ M	EXISTING MANHOLE
○ WV	EXISTING WATERMAIN VALVE	○ T	EXISTING TRANSFORMER
○ WSO	EXISTING WATERMAIN SHUTOFF	— UGC —	EXISTING UNDERGROUND CABLE
○ SC	EXISTING SANITARY CLEANOUT	— OHC —	EXISTING OVERHEAD CABLE
<b>GEOTECHNICAL</b>		<b>SIGNING, PARKING AND PAVEMENT MARKINGS</b>	
⊕	BOREHOLE	—	TRAFFIC FLOW DELINEATION
●	PROBEHOLE	- - -	LANE DELINEATION
(BASED ON PATERSON GROUP GEOTECHNICAL INVESTIGATION MARCH 25, 2010.)		▨	DEPRESSED CURB
		⊕	SIGN - AS INDICATED
		⊕	EXISTING SIGN - AS INDICATED

**J.L. Richards & Associates Limited**  
175 Progress Road  
North Bay, ON Canada  
P1B 8G4  
Tel: 705 495 7597  
Fax: 705 495 6992

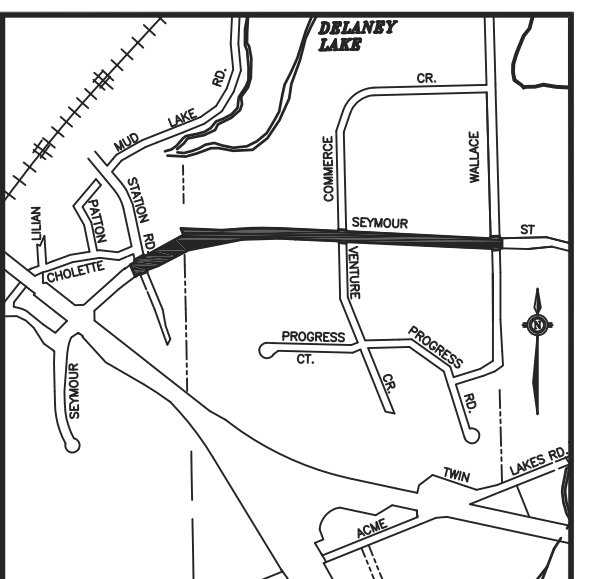
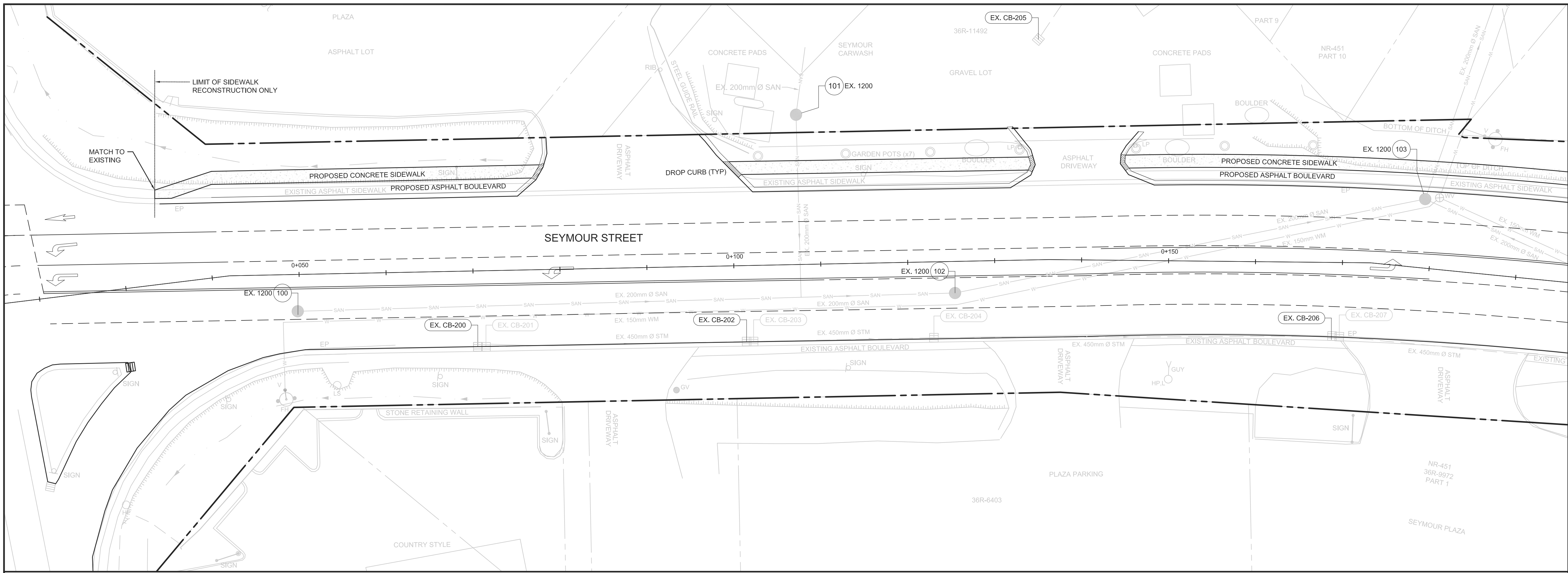
**HDR**  
JLR Project Number - 24107

**NORTH BAY**  
ONTARIO, CANADA

**EA & PRELIMINARY DESIGN OF SEYMOUR STREET**  
Tender

**GENERAL PLAN & DRAWING INDEX**

designer DJLH	drawn by: DJLH
checked by: LJR	approved by:
scale N.T.S.	
date JUNE 2012	drawing number G-100



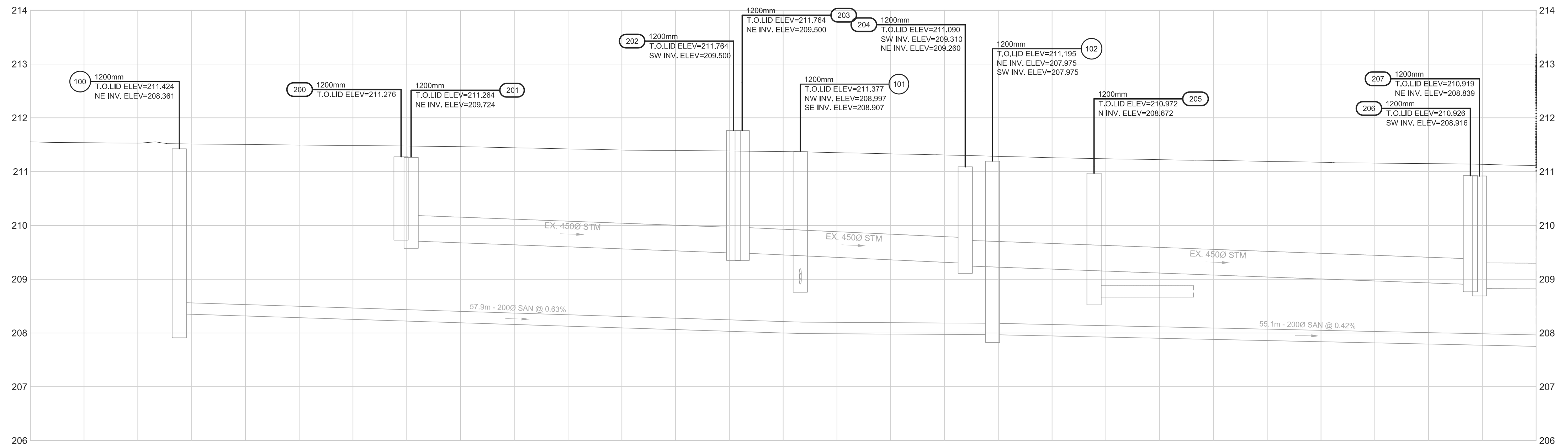
**LEGEND**

- W - EXISTING WATERMAIN
- W - PROPOSED WATERMAIN
- SAN - EXISTING SANITARY
- SAN - PROPOSED SANITARY
- STM - EXISTING STORM
- STM - PROPOSED STORM
- MH - EXISTING SANITARY MANHOLE
- MH - PROPOSED SANITARY MANHOLE
- MH - EXISTING STORM MANHOLE
- MH - PROPOSED STORM MANHOLE
- CB - EXISTING CATCHBASIN
- CB - PROPOSED CATCHBASIN
- FH - EXISTING FIRE HYDRANT
- VC - EXISTING VALVE CHAMBER
- WV - EXISTING WATERMAIN VALVE
- WV - EXISTING WATERMAIN SHUTOFF
- San - EXISTING SANITARY CLEANOUT
- LS - EXISTING LIGHT STANDARD
- HP - EXISTING HYDRO POLE
- Guy - EXISTING GUY WIRE
- HP.L - EXISTING HYDRO POLE w/ LIGHT
- TP - EXISTING TRAFFIC LIGHT POLE
- HP.TL - EXISTING HYDRO POLE w/ TRAFFIC LIGHT POLE
- IB - STANDARD IRON BAR
- PM - PARKING METER
- DDPM - DOUBLE PARKING METER
- Tree - EXISTING TREE w/ RETAINING WALL
- Bores - BOREHOLE (BASED ON PATERSON GROUP GEOTECHNICAL INVESTIGATION MARCH 25, 2010.)

**REVISIONS**

no.	date	by	description
1.	9 AUG 2012	A	ISSUED FOR CLIENT REVIEW
2.	10 SEP 2012	B	ISSUED FOR PUBLIC INFORMATION CENTRE 1
3.	12 NOV 2012	C	ISSUED FOR CLIENT REVIEW
4.	16 NOV 2012	D	ISSUED FOR AGENCY REVIEW

Seymour Street



DESIGN PROFILE ELEVATIONS	211.605	211.605	211.664	211.664	211.922	211.922	211.931	211.931	211.940	211.940	211.725	211.725
600 W.M. TOP ELEVATIONS												
LEFT CULVERT INV. ELEVATION												
RIGHT CULVERT INV. ELEVATION												
C.L. ROADWAY STATION	0+060	0+060	0+060	0+100	0+100	0+120	0+120	0+140	0+140	0+160	0+160	0+180

**J.L. Richards & Associates Limited**  
 175 Progress Road  
 North Bay, ON Canada  
 P1A 0B9  
 Tel: 705 495 7597  
 Fax: 705 495 6692

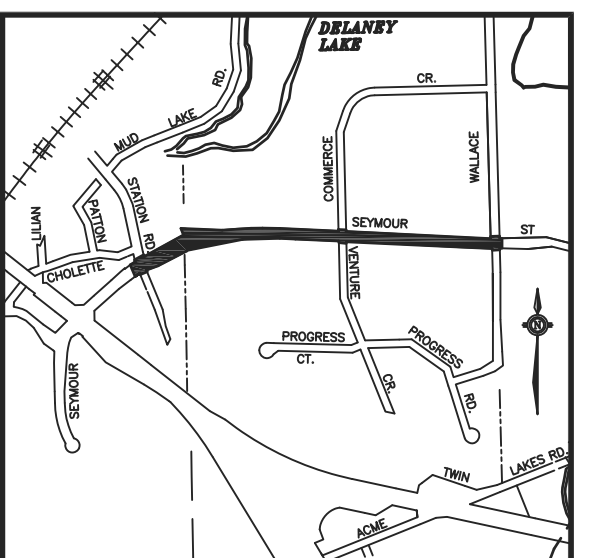
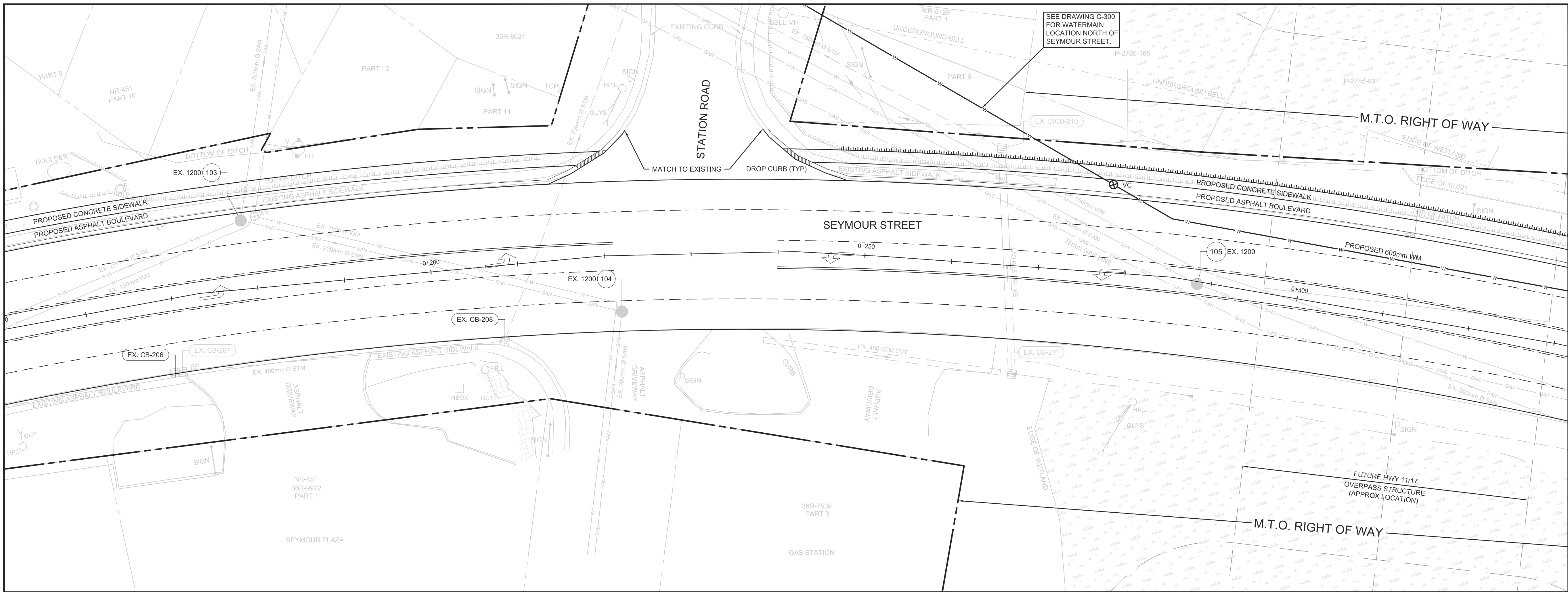
**HDR**  
 JLR Project Number - 24109

**NORTH BAY**  
 ONTARIO CANADA  
 Just North Enough to be PERFECT

**SEYMOUR STREET  
 EA & PRELIMINARY  
 DESIGN**

**PLAN & PROFILE  
 STATION  
 0+000 to 0+170**

designer LJR	drawn by: DJLH
checked by: LJR	approved by: LJR
scale 1:250 1:50	drawing number C-100
date MAY, 2012	



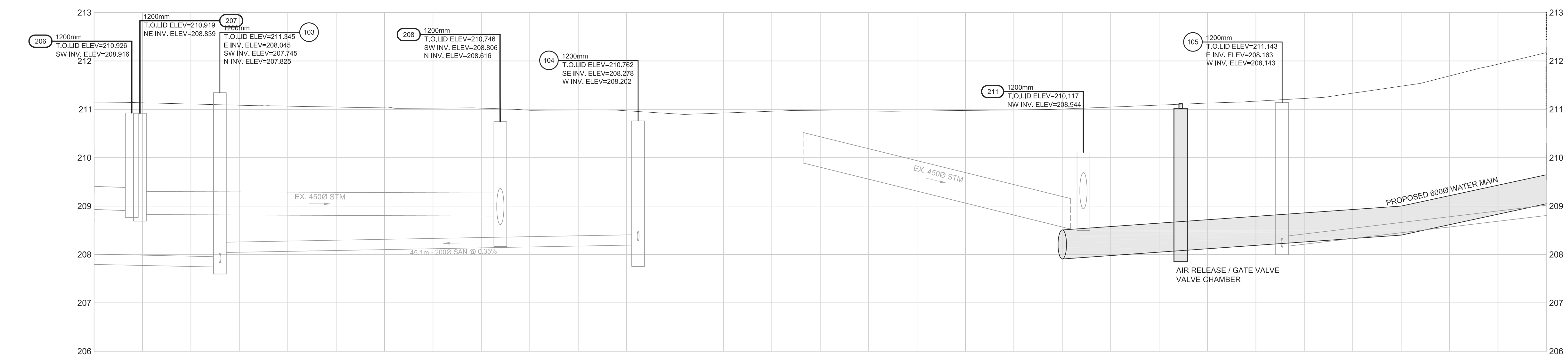
**KEY PLAN**  
**LEGEND**

**PRELIMINARY  
NOT FOR  
CONSTRUCTION**  
16 NOV 2012

**REVISIONS**

no.	date	by	description
1.	9 AUG 2012	A	ISSUED FOR CLIENT REVIEW
2.	10 SEP 2012	B	ISSUED FOR PUBLIC INFORMATION CENTRE 1
3.	12 NOV 2012	C	ISSUED FOR CLIENT REVIEW
4.	16 NOV 2012	D	ISSUED FOR AGENCY REVIEW

**Seymour Street**



DESIGN PROFILE ELEVATIONS	211.170	211.110	211.029	211.029	210.968	210.968	210.976	210.976	211.038	211.038	211.334	211.334
600 W.M. TOP ELEVATIONS												
LEFT CULVERT INV. ELEVATION												
RIGHT CULVERT INV. ELEVATION												
C.L. ROADWAY STATION	0+170	0+180	0+200	0+220	0+240	0+260	0+280	0+300	0+320			

**J.L. Richards & Associates Limited**  
175 Progress Road  
North Bay, ON Canada  
P1A 0S9  
Tel: 705 495 7597  
Fax: 705 495 6662

**HDR**  
JLR Project Number - 24109

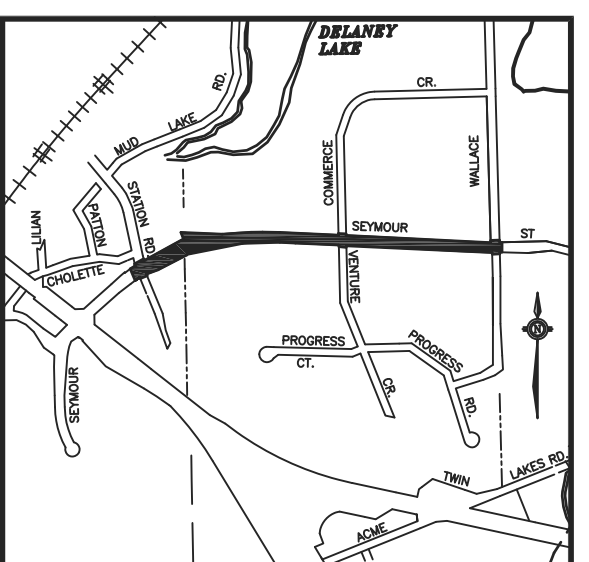
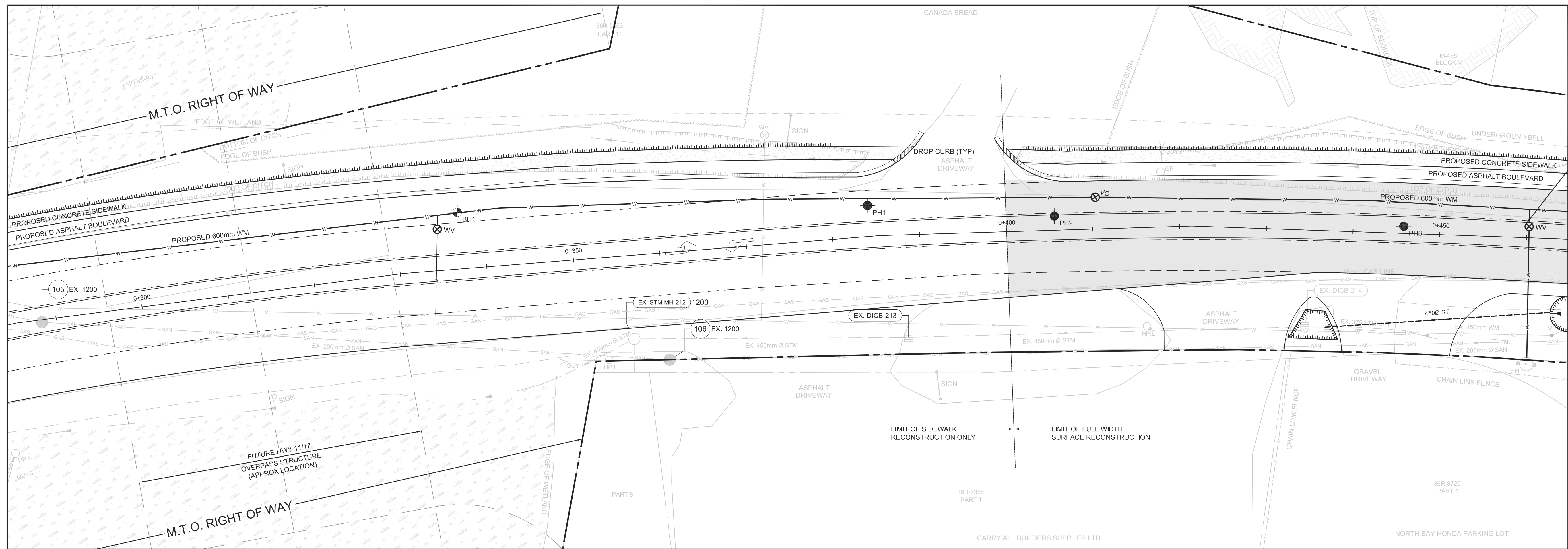
**NORTH BAY**  
ONTARIO CANADA  
Just North Enough to be PERFECT

**SEYMOUR STREET  
EA & PRELIMINARY  
DESIGN**

**PLAN & PROFILE  
STATION  
0+170 to 0+320**

designer LJR	drawn by: DJLH
checked by: LJR	approved by: LJR
scale 1:250 1:50	date MAY, 2012
	drawing number C-101





**KEY PLAN**

**LEGEND**

**PRELIMINARY  
NOT FOR  
CONSTRUCTION**  
16 NOV 2012

**REVISIONS**

no.	date	by	description
1.	9 AUG 2012	A	ISSUED FOR CLIENT REVIEW
2.	12 SEP 2012	B	ISSUED FOR PUBLIC INFORMATION CENTRE 1
3.	12 NOV 2012	C	ISSUED FOR CLIENT REVIEW
4.	16 NOV 2012	D	ISSUED FOR AGENCY REVIEW

**J.L. Richards & Associates Limited**  
175 Progress Road  
North Bay, ON Canada  
P1A 0S9  
Tel: 705 495 7597  
Fax: 705 495 6692

**HDR**  
JLR Project Number - 24109

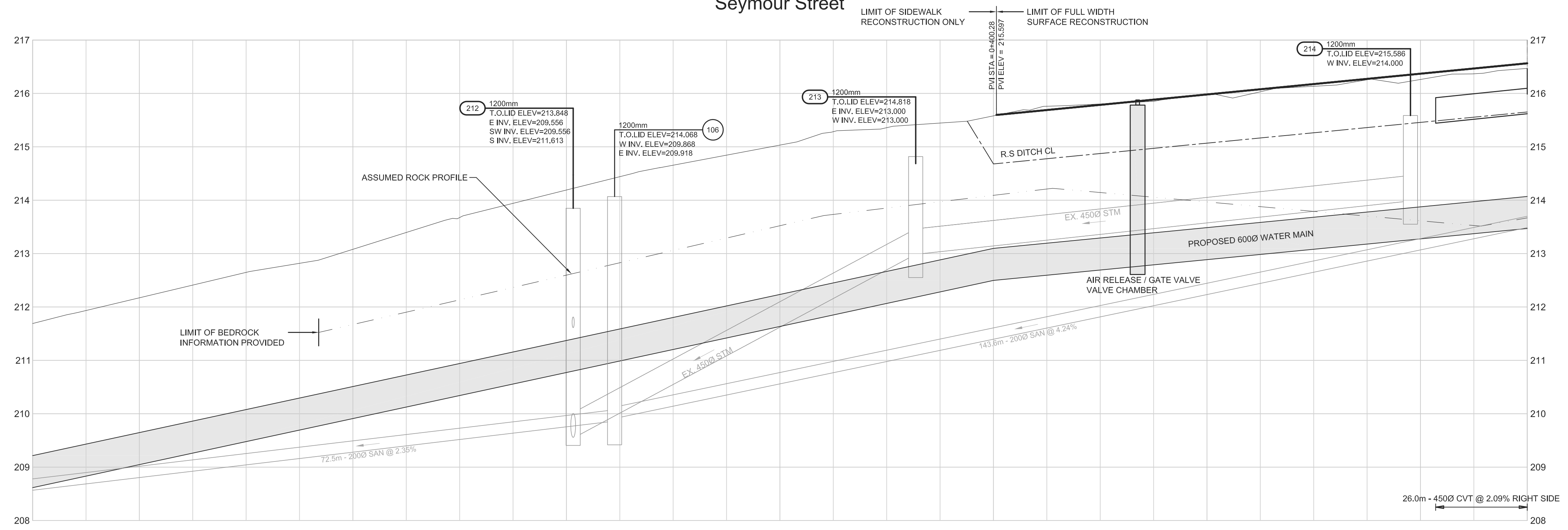
**NORTH BAY**  
ONTARIO CANADA  
Just North Enough to be PERFECT

**SEYMOUR STREET  
EA & PRELIMINARY  
DESIGN**

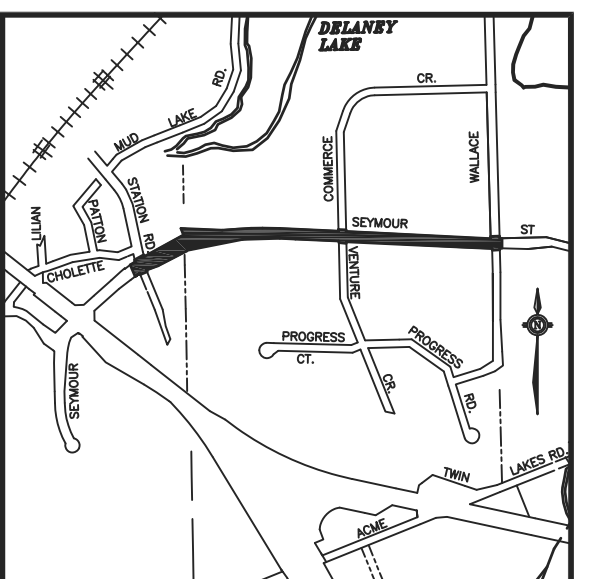
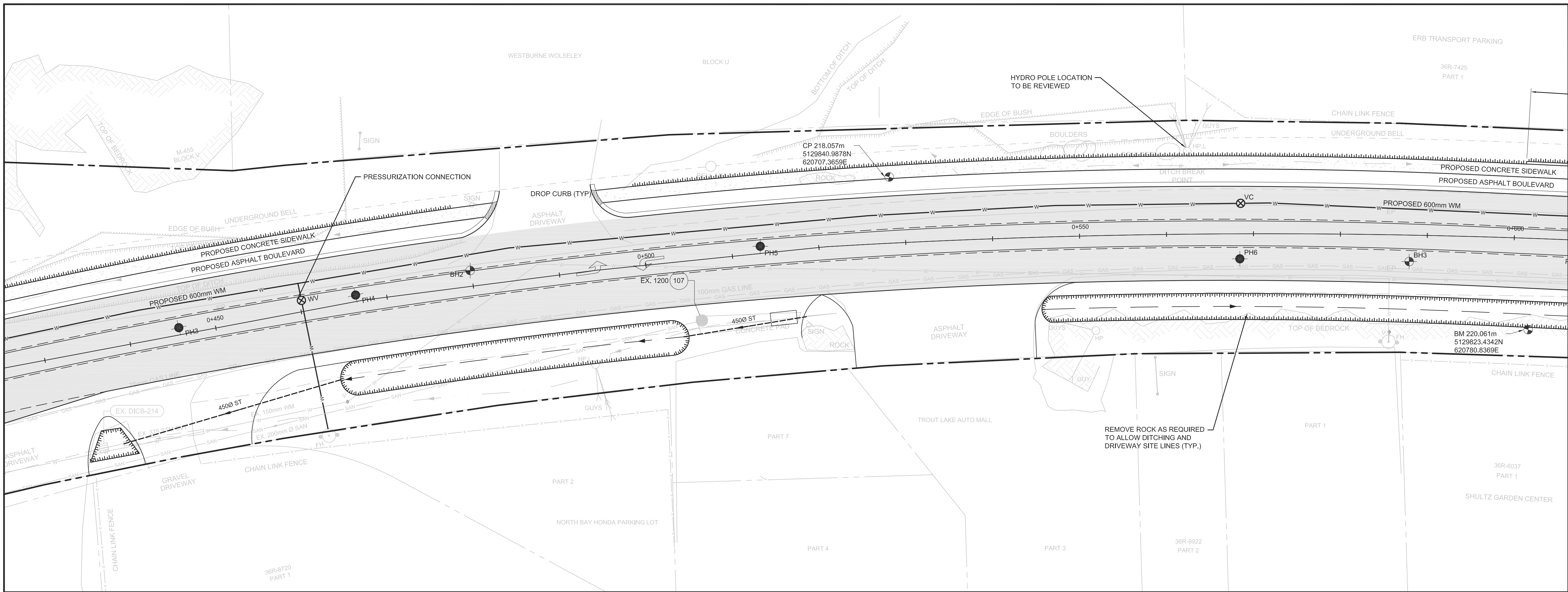
**PLAN & PROFILE  
STATION  
0+320 to 0+450**

designer LJR	drawn by: DJLH
checked by: LJR	approved by: LJR
scale 1:250 1:50	drawing number C-102
date MAY, 2012	

**Seymour Street**



DESIGN PROFILE ELEVATIONS	212.172	212.172	213.090	213.090	214.091	214.091	215.032	215.032	215.997	215.997	216.922	216.922
600 W.M. TOP ELEVATIONS	206.216	206.647	210.509	213.090	211.372	214.191	212.235	215.032	213.097	215.997	213.486	216.922
LEFT CULVERT INV. ELEVATION												215.456
RIGHT CULVERT INV. ELEVATION												215.456
C.L. ROADWAY STATION	0+310	0+320	0+340	0+360	0+380	0+400	0+420	0+440	0+450			



**KEY PLAN**

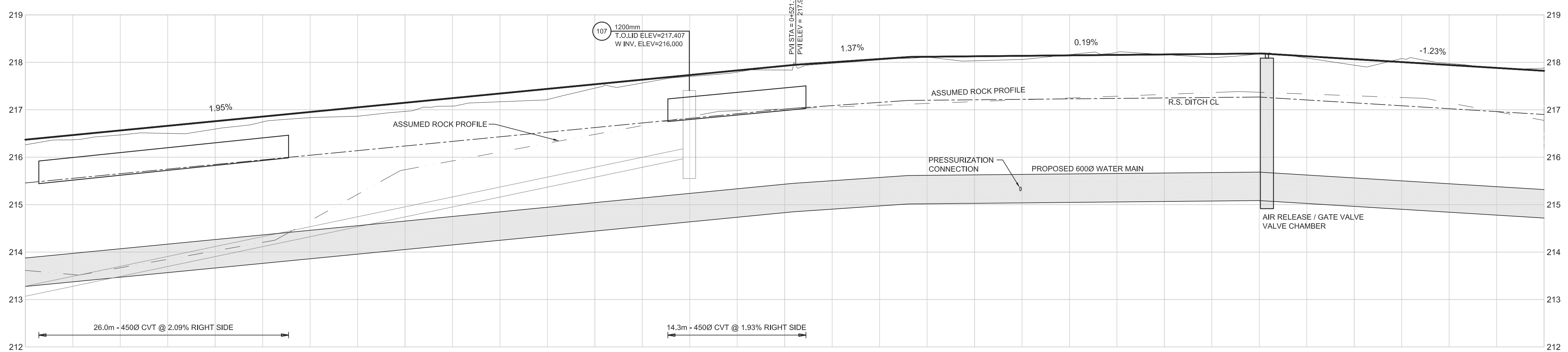
**LEGEND**

**PRELIMINARY  
NOT FOR  
CONSTRUCTION**  
16 NOV 2012

**REVISIONS**

no.	date	by	description
1.	9 AUG 2012	A	ISSUED FOR CLIENT REVIEW
2.	12 SEP 2012	B	ISSUED FOR PUBLIC INFORMATION CENTRE 1
3.	12 NOV 2012	C	ISSUED FOR CLIENT REVIEW
4.	16 NOV 2012	D	ISSUED FOR AGENCY REVIEW

**Seymour Street**



DESIGN PROFILE ELEVATIONS	213.875	214.264	214.653	215.043	215.432	215.822	216.212	216.602	216.992	217.382	217.772	218.162	218.552	218.942	219.332
600 W.M. TOP ELEVATIONS	213.875	214.264	214.653	215.043	215.432	215.822	216.212	216.602	216.992	217.382	217.772	218.162	218.552	218.942	219.332
LEFT CULVERT INV. ELEVATION															
RIGHT CULVERT INV. ELEVATION	215.456			216.000			216.765			217.240					
C.L. ROADWAY STATION	0+440	0+480	0+480	0+500	0+500	0+520	0+520	0+540	0+540	0+560	0+560	0+580	0+580	0+600	0+600

**J.L. Richards & Associates Limited**  
175 Progress Road  
North Bay, ON Canada  
P1A 0S9  
Tel: 705 495 7597  
Fax: 705 495 6692

**HDR**  
JLR Project Number - 24109

**NORTH BAY**  
ONTARIO CANADA  
Just North Enough to be PERFECT

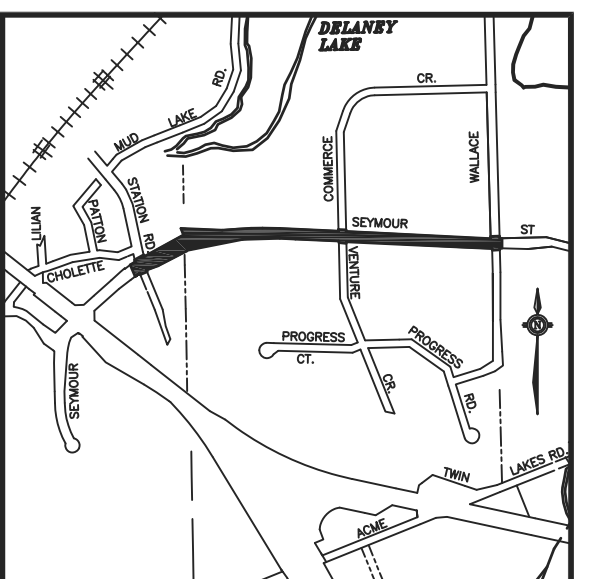
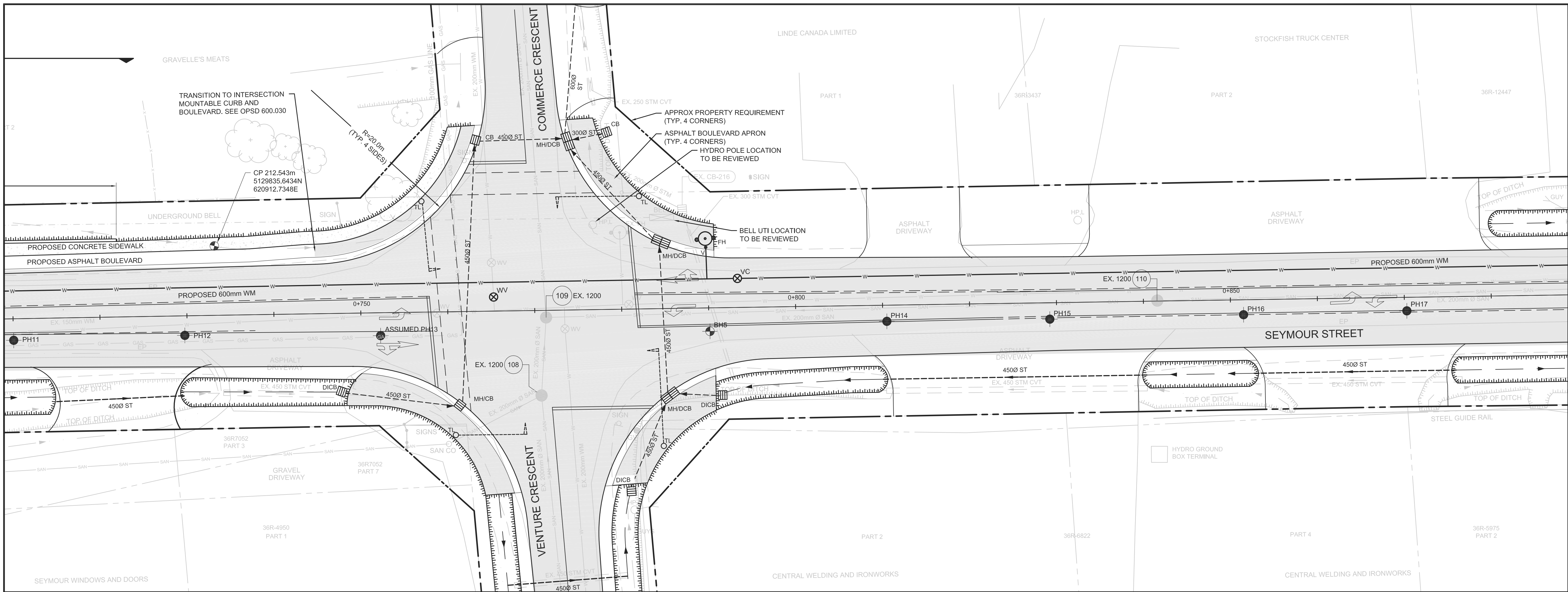
**SEYMOUR STREET  
EA & PRELIMINARY  
DESIGN**

**PLAN & PROFILE  
STATION  
0+450 to 0+600**

designer LJR	drawn by: DJLH
checked by: LJR	approved by: LJR
scale 1:250 1:50	date MAY, 2012
	drawing number C-103







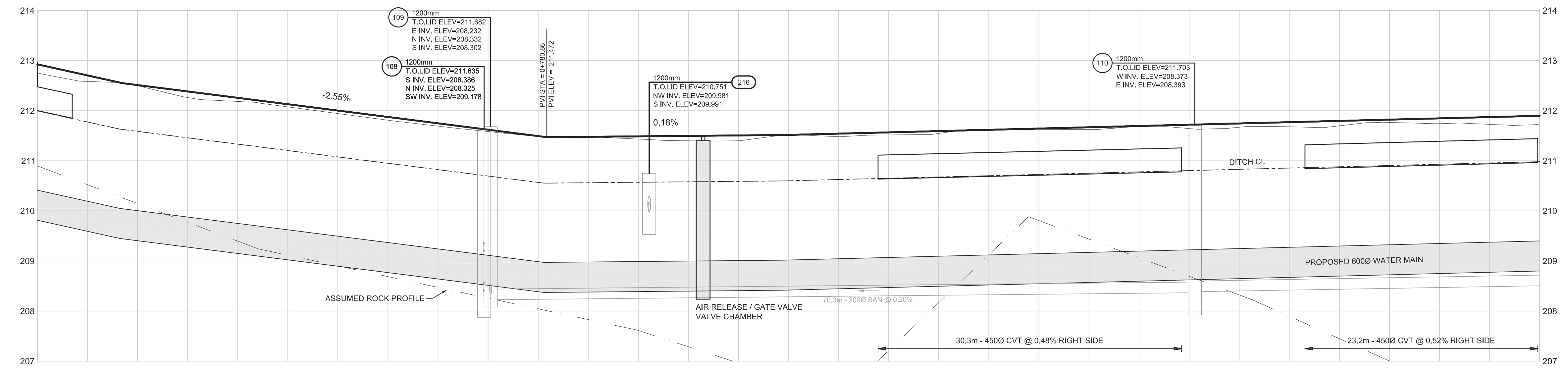
**KEY PLAN**  
**LEGEND**

**PRELIMINARY  
NOT FOR  
CONSTRUCTION**  
16 NOV 2012

**REVISIONS**

no.	date	by	description
1.	9 AUG 2012	A	ISSUED FOR CLIENT REVIEW
2.	10 SEP 2012	B	ISSUED FOR PUBLIC INFORMATION CENTRE 1
3.	12 NOV 2012	C	ISSUED FOR CLIENT REVIEW
4.	16 NOV 2012	D	ISSUED FOR AGENCY REVIEW

**Seymour Street**



DESIGN PROFILE ELEVATIONS	212.500	212.500	211.945	211.945	211.401	211.401	211.689	211.689	211.689	211.689
600 W.M. TOP ELEVATIONS	210.415	210.006	209.496	209.987	209.008	209.095	209.197	209.299	209.299	210.979
LEFT CULVERT INV. ELEVATION	212.500	212.500	211.865							
RIGHT CULVERT INV. ELEVATION	212.500	211.865								
C.L. ROADWAY STATION	0+720	0+740	0+760	0+780	0+800	0+820	0+840	0+860		0+880

**J.L. Richards & Associates Limited**  
175 Progress Road  
North Bay, ON Canada  
P1A 0S9  
Tel: 705 495 7597  
Fax: 705 495 6662

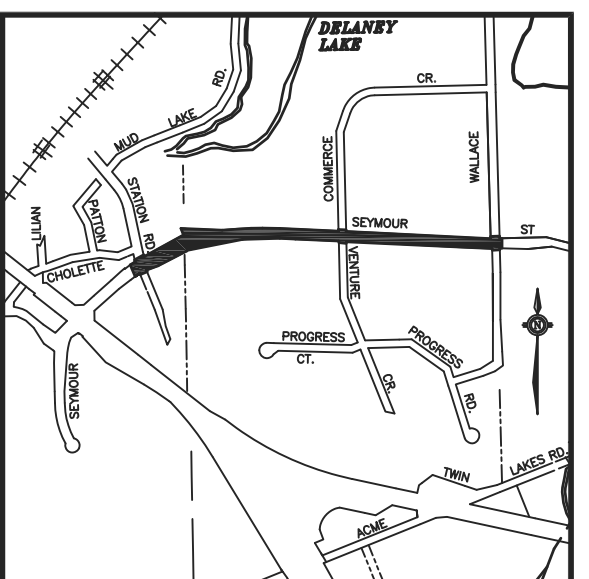
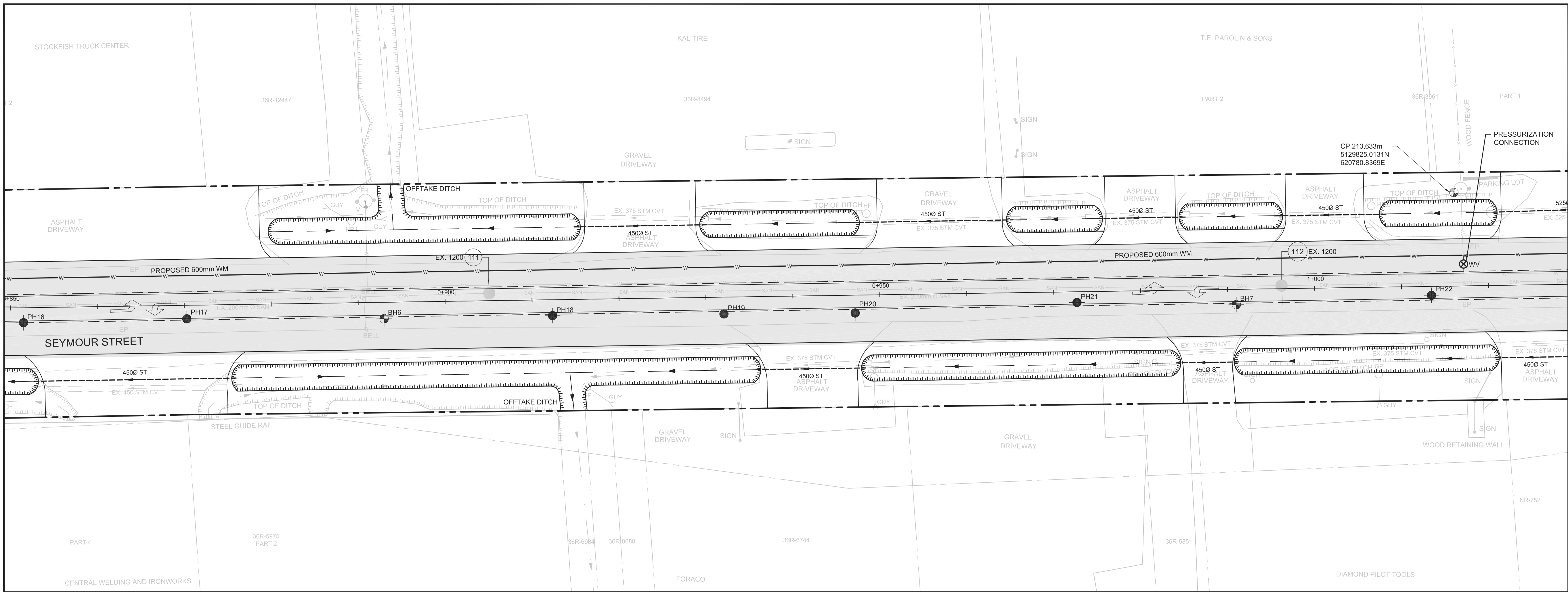


**SEYMOUR STREET  
EA & PRELIMINARY  
DESIGN**

**PLAN & PROFILE  
STATION  
0+740 to 0+880**

designer LJR	drawn by: DJLH
checked by: LJR	approved by: LJR
scale 1:250 1:50	drawing number C-105
date MAY, 2012	





**KEY PLAN**

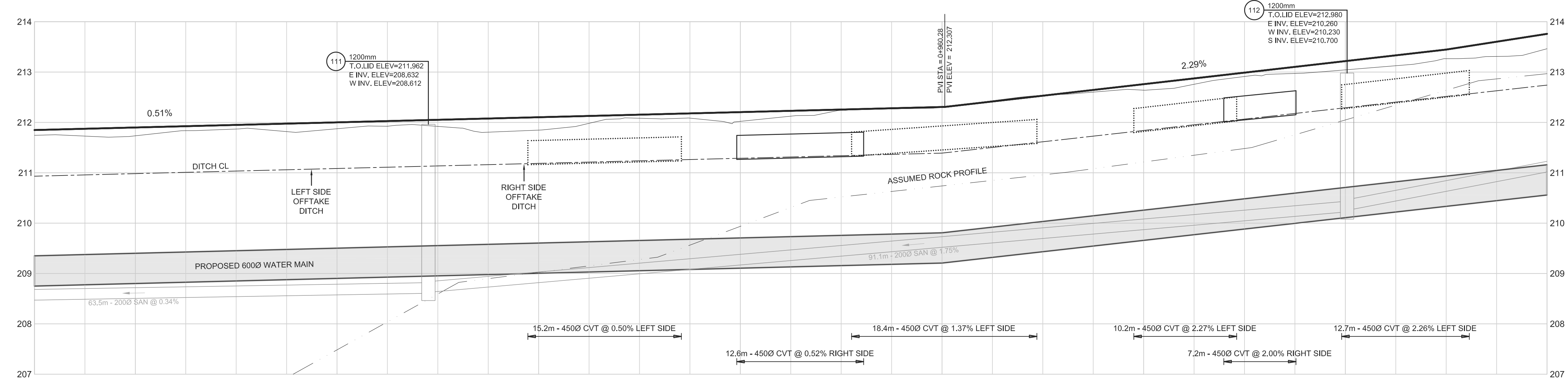
**LEGEND**

**PRELIMINARY  
NOT FOR  
CONSTRUCTION**  
16 NOV 2012

**REVISIONS**

no.	date	by	description
1.	9 AUG 2012	A	ISSUED FOR CLIENT REVIEW
2.	10 SEP 2012	B	ISSUED FOR PUBLIC INFORMATION CENTRE 1
3.	12 NOV 2012	C	ISSUED FOR CLIENT REVIEW
4.	16 NOV 2012	D	ISSUED FOR AGENCY REVIEW

**Seymour Street**



DESIGN PROFILE ELEVATIONS		211.734	211.734	211.874	211.874	212.021	212.021	212.304	212.304	212.640	212.640	213.043	213.043
600 W.M. TOP ELEVATIONS	209.350	209.401	209.502	209.604	209.706	209.807	210.258	210.258	210.708	210.708	210.708	210.708	210.708
LEFT CULVERT INV. ELEVATION		211.173	211.173	211.249	211.249	211.278	211.343	211.595	211.811	212.083	212.166	212.281	212.567
RIGHT CULVERT INV. ELEVATION		211.173	211.173	211.249	211.249	211.278	211.343	211.595	211.811	212.083	212.166	212.281	212.567
C.L. ROADWAY STATION	0+870	0+880	0+900	0+920	0+940	0+960	0+980	1+000	1+020				

**J.L. Richards & Associates Limited**  
175 Progress Road  
North Bay, ON Canada  
P1A 0S9  
Tel: 705 495 7597  
Fax: 705 495 6692

**HDR**  
JLR Project Number - 24109

**NORTH BAY**  
ONTARIO CANADA  
Just North Enough to be PERFECT

**SEYMOUR STREET  
EA & PRELIMINARY  
DESIGN**

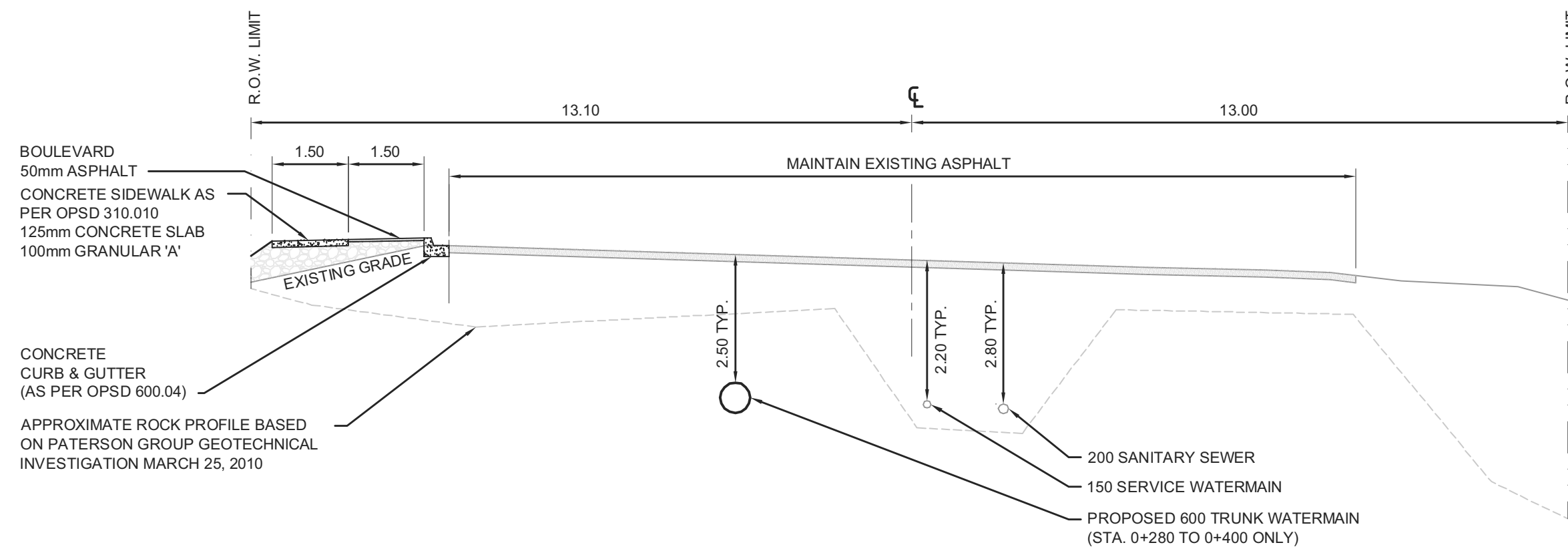
**PLAN & PROFILE  
STATION  
0+880 to 1+020**

designer LJR	drawn by: DJLH
checked by: LJR	approved by: LJR
scale 1:250 1:50	date MAY, 2012
drawing number C-106	

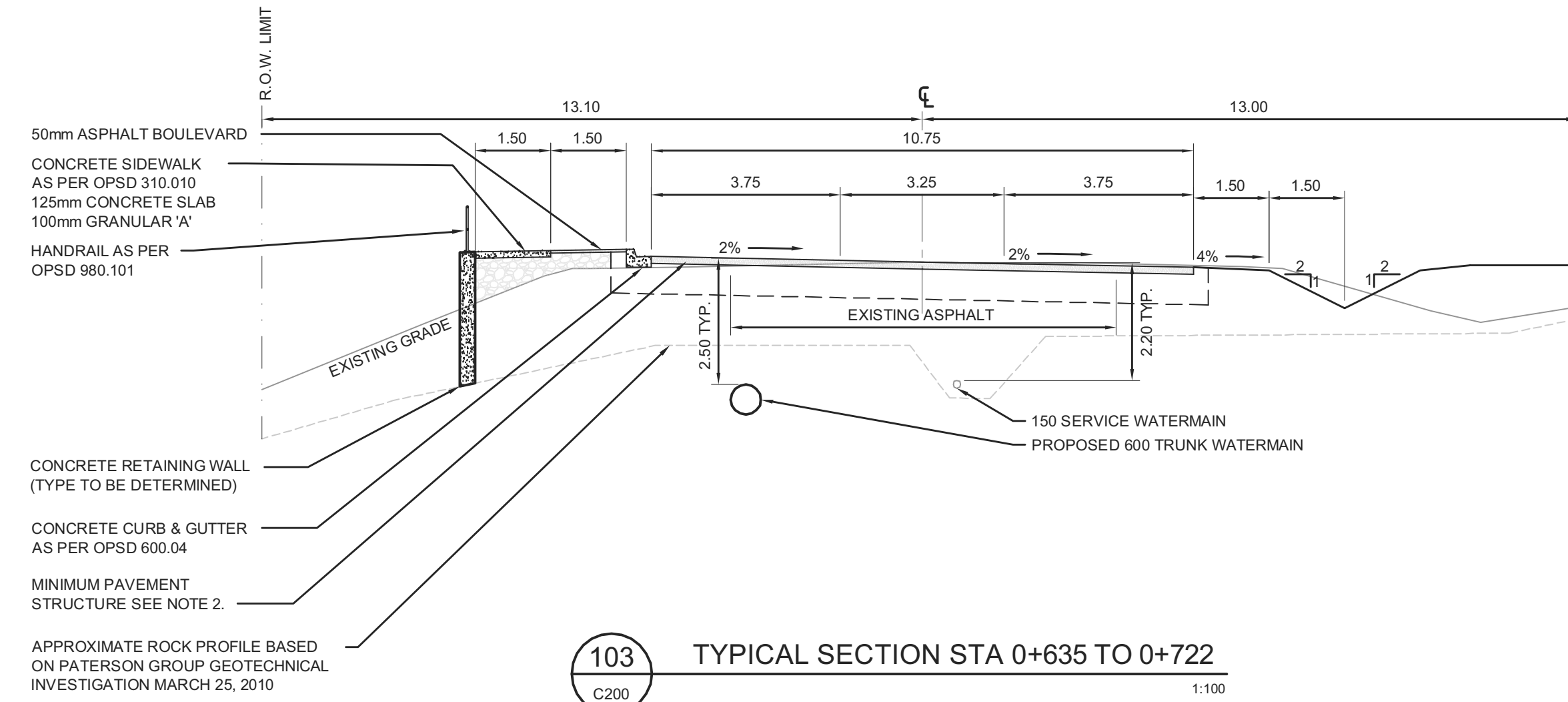




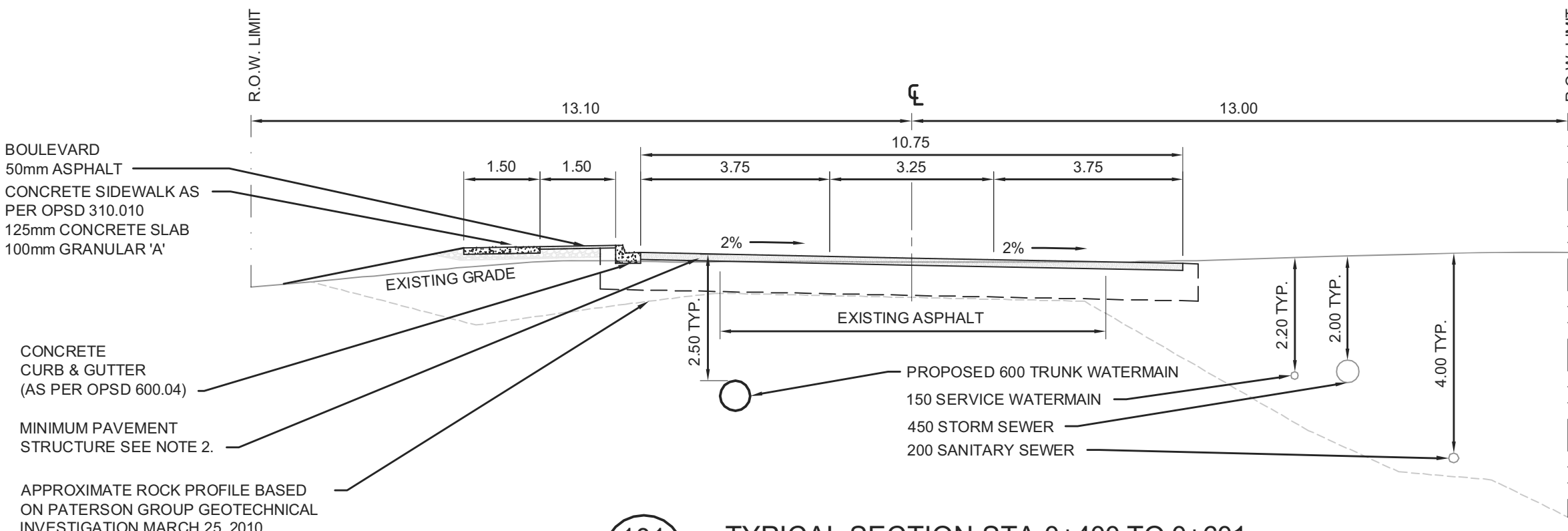




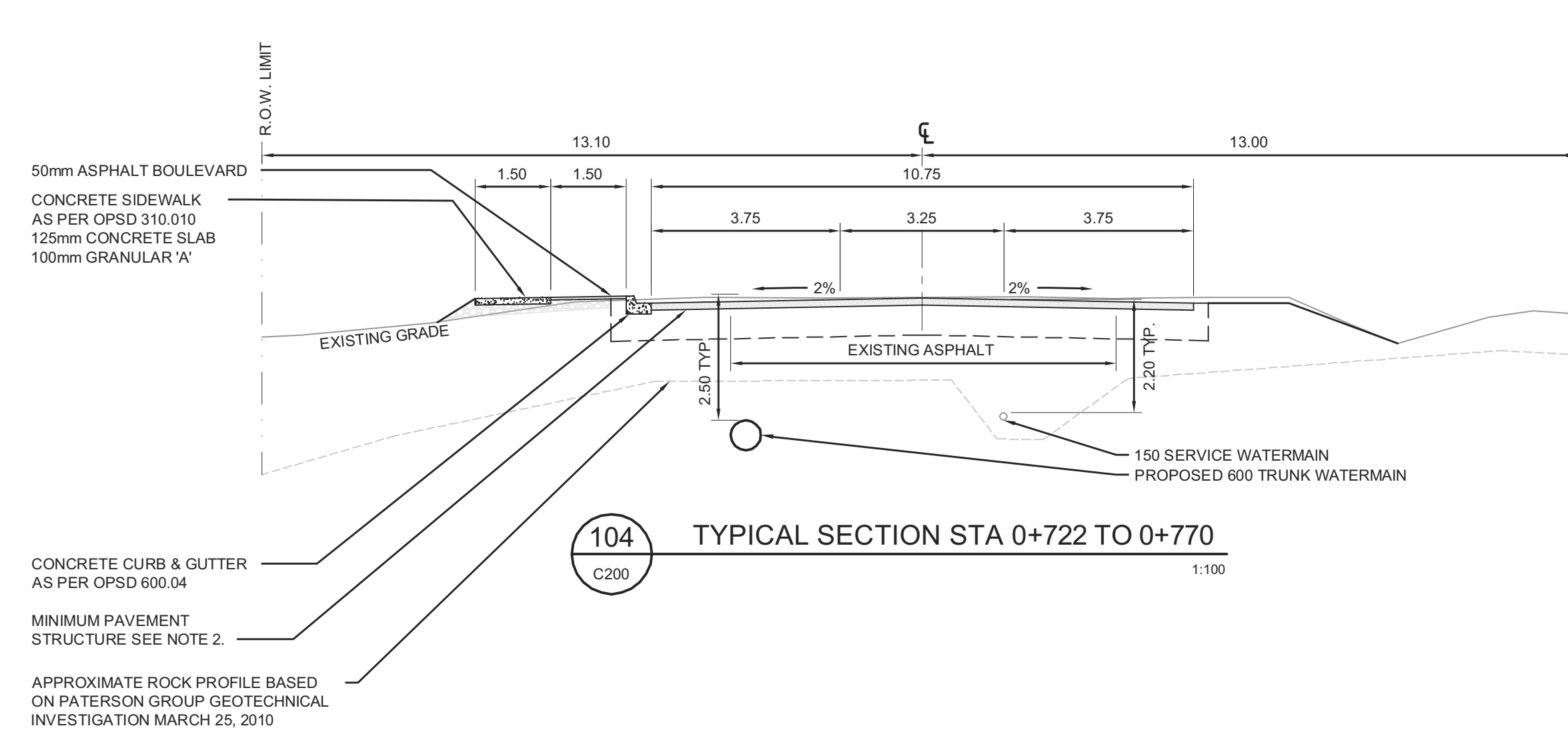
100 TYPICAL SECTION STA 0+032 TO 0+400  
C200 1:100



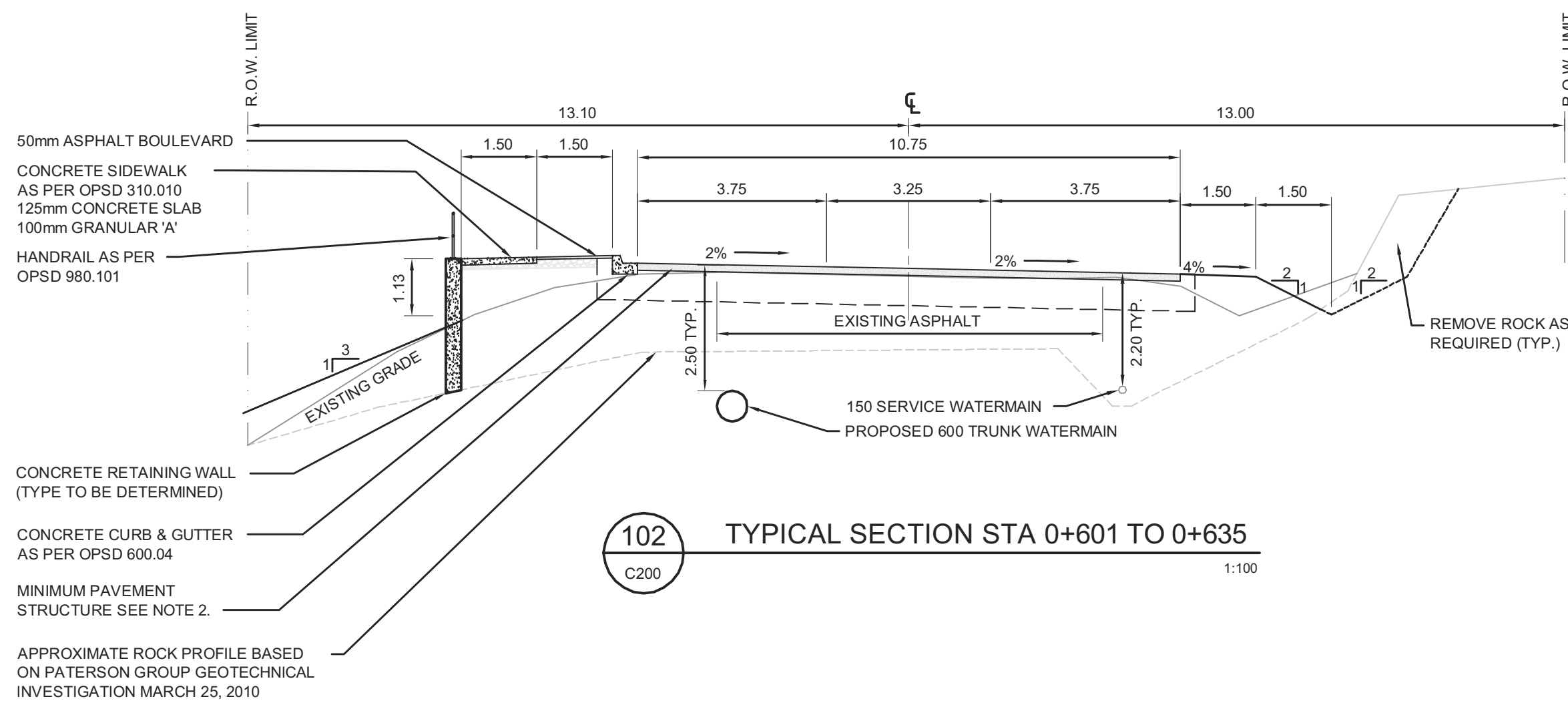
103 TYPICAL SECTION STA 0+635 TO 0+722  
C200 1:100



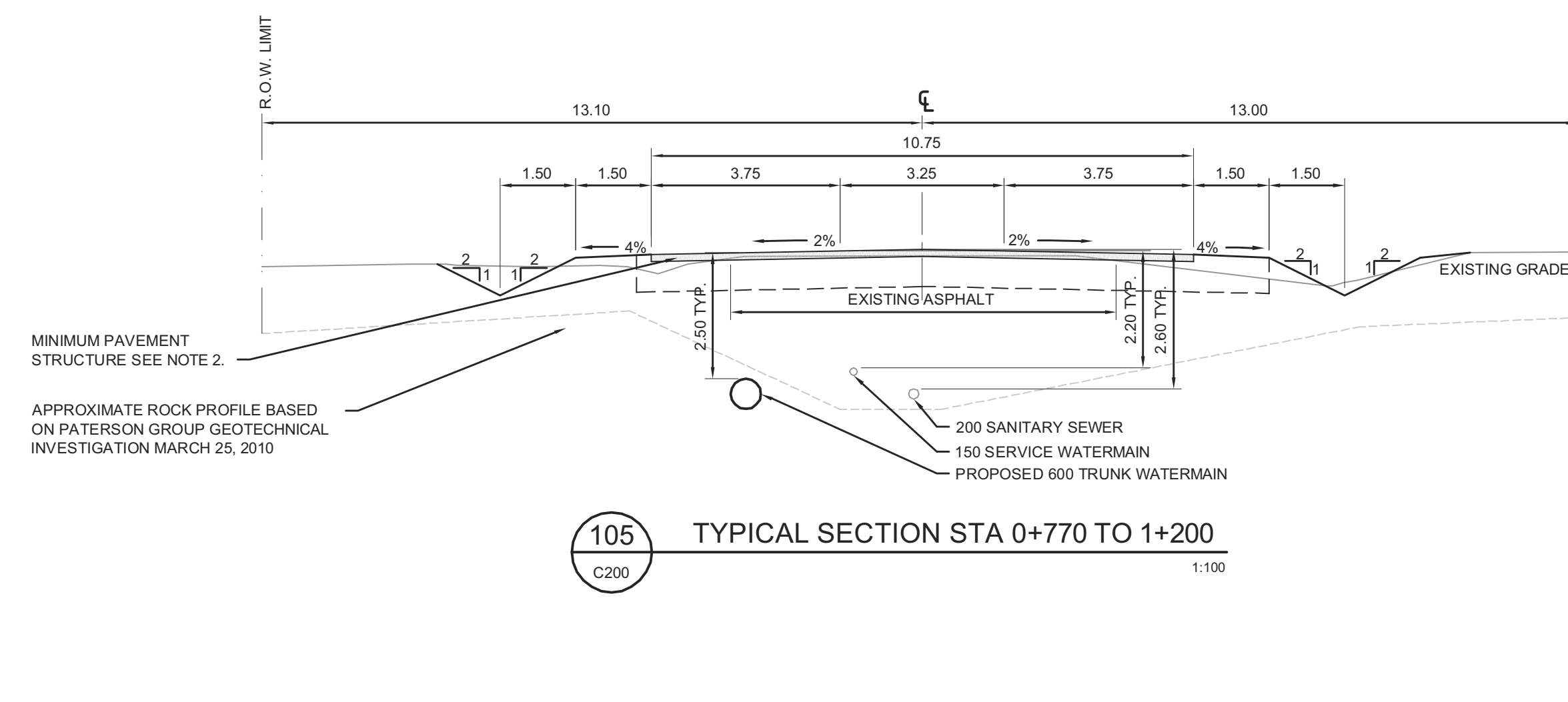
101 TYPICAL SECTION STA 0+400 TO 0+601  
C200 1:100



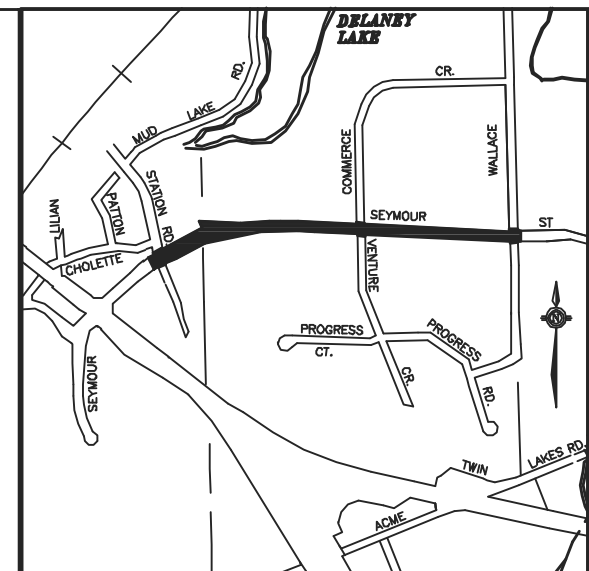
104 TYPICAL SECTION STA 0+722 TO 0+770  
C200 1:100



102 TYPICAL SECTION STA 0+601 TO 0+635  
C200 1:100



105 TYPICAL SECTION STA 0+770 TO 1+200  
C200 1:100



- NOTES:**
- UTILITY LOCATIONS NOT SHOWN.
  - MINIMUM PAVEMENT STRUCTURE:
    - A. 40mm HL-3 OR HL-4 ASPHALT
    - B. 50mm HL-8 ASPHALT TOP COURSE
    - C. 50mm HL-8 ASPHALT BASE COURSE
    - D. 150mm GRANULAR 'A' BASE
    - E. 500mm GRANULAR 'B' SUBBASE
    - F. SUBGRADE - IN SITU OR NATIVE BACKFILL
  - TYPICAL ROAD SECTION TRANSITIONS TO THREE 4.0m WIDE LANES AT INTERSECTION OF SEYMOUR ST. AND COMMERCE / VENTURE WITH MOUNTABLE CURB AS PER OPSD 600.030.

**PRELIMINARY  
NOT FOR  
CONSTRUCTION**

16 NOV 2012

REVISIONS			
no.	date	by	description
1.	9 AUG 2012	A	ISSUED FOR CLIENT REVIEW
2.	10 SEP 2012	B	ISSUED FOR PUBLIC INFORMATION CENTRE 1
3.	12 NOV 2012	C	ISSUED FOR CLIENT REVIEW
4.	15 NOV 2012	D	ISSUED FOR AGENCY REVIEW

**JR**  
J.L. Richards  
ENGINEERS-ARCHITECTS-PLANNERS

J.L. Richards & Associates Limited  
175 Progress Road  
North Bay, ON Canada  
P1B 8G4  
Tel: 705 495 7597  
Fax: 705 495 6692

**HDR**

JLR Project Number - 24109

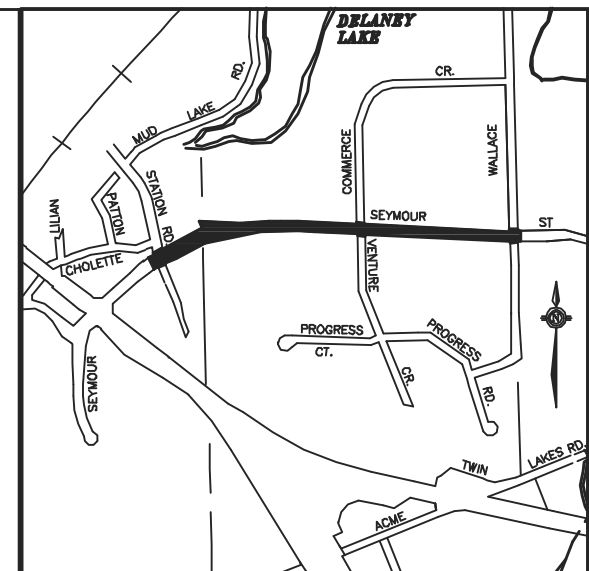
**NORTH BAY**  
ONTARIO, CANADA

**SEYMOUR STREET  
EA & PRELIMINARY  
DESIGN**

**TYPICAL  
SECTIONS**

designer LJR	drawn by: DJLH
checked by: LJR	approved by: LJR
scale 1:100	
date MAY 2012	drawing number C-200





KEY PLAN

PRELIMINARY  
NOT FOR  
CONSTRUCTION  
16 NOV 2012

REVISIONS

no.	date	by	description
1.	9 AUG 2012	A	ISSUED FOR CLIENT REVIEW
2.	10 SEP 2012	B	ISSUED FOR PUBLIC INFORMATION CENTRE 1
3.	12 NOV 2012	C	ISSUED FOR CLIENT REVIEW
4.	15 NOV 2012	D	ISSUED FOR AGENCY REVIEW

**JR**  
J.L. Richards  
ENGINEERS-ARCHITECTS-PLANNERS

J.L. Richards & Associates Limited  
175 Progress Road  
North Bay, ON Canada  
P1B 8G4  
Tel: 705 495 7597  
Fax: 705 495 6692

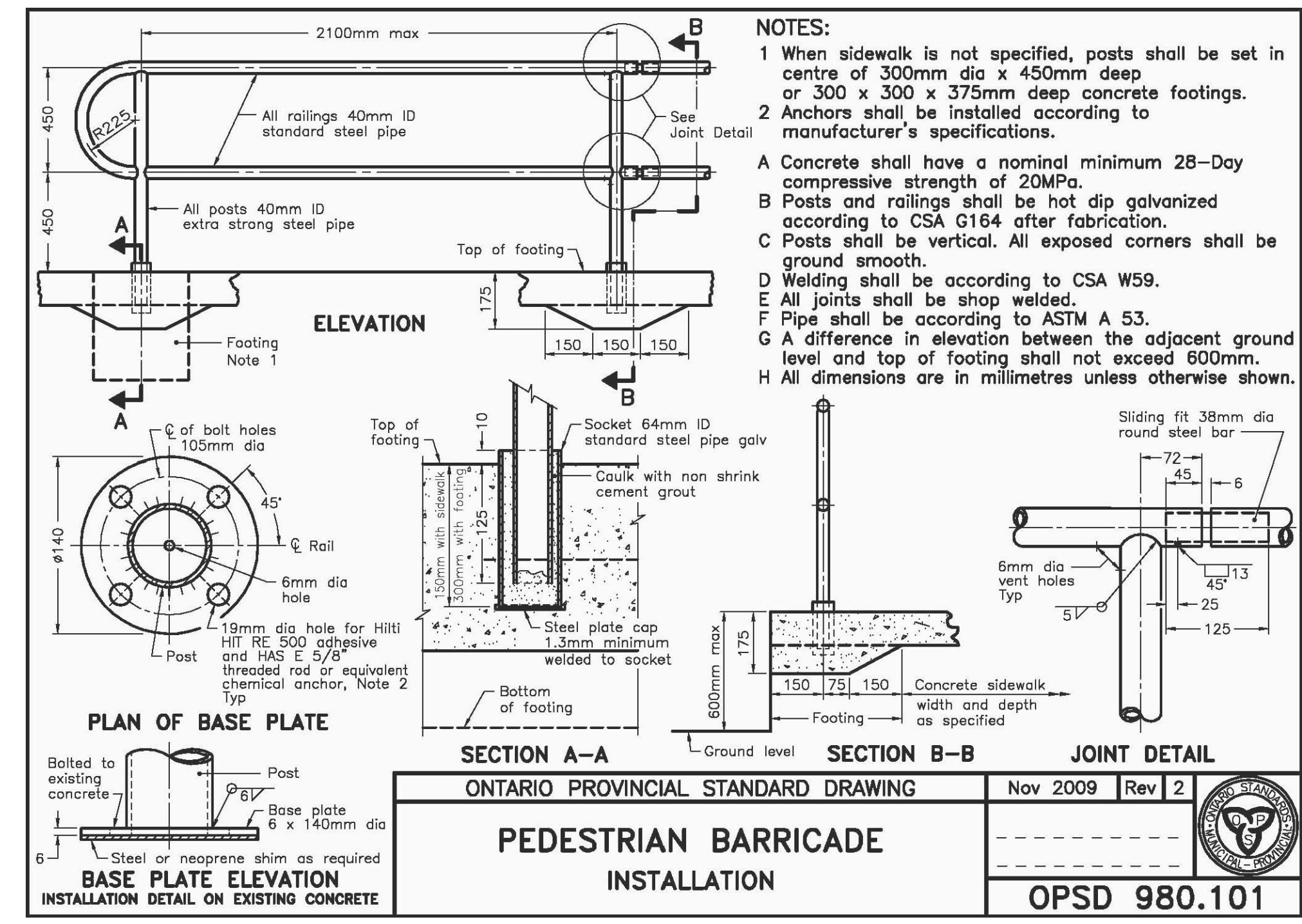
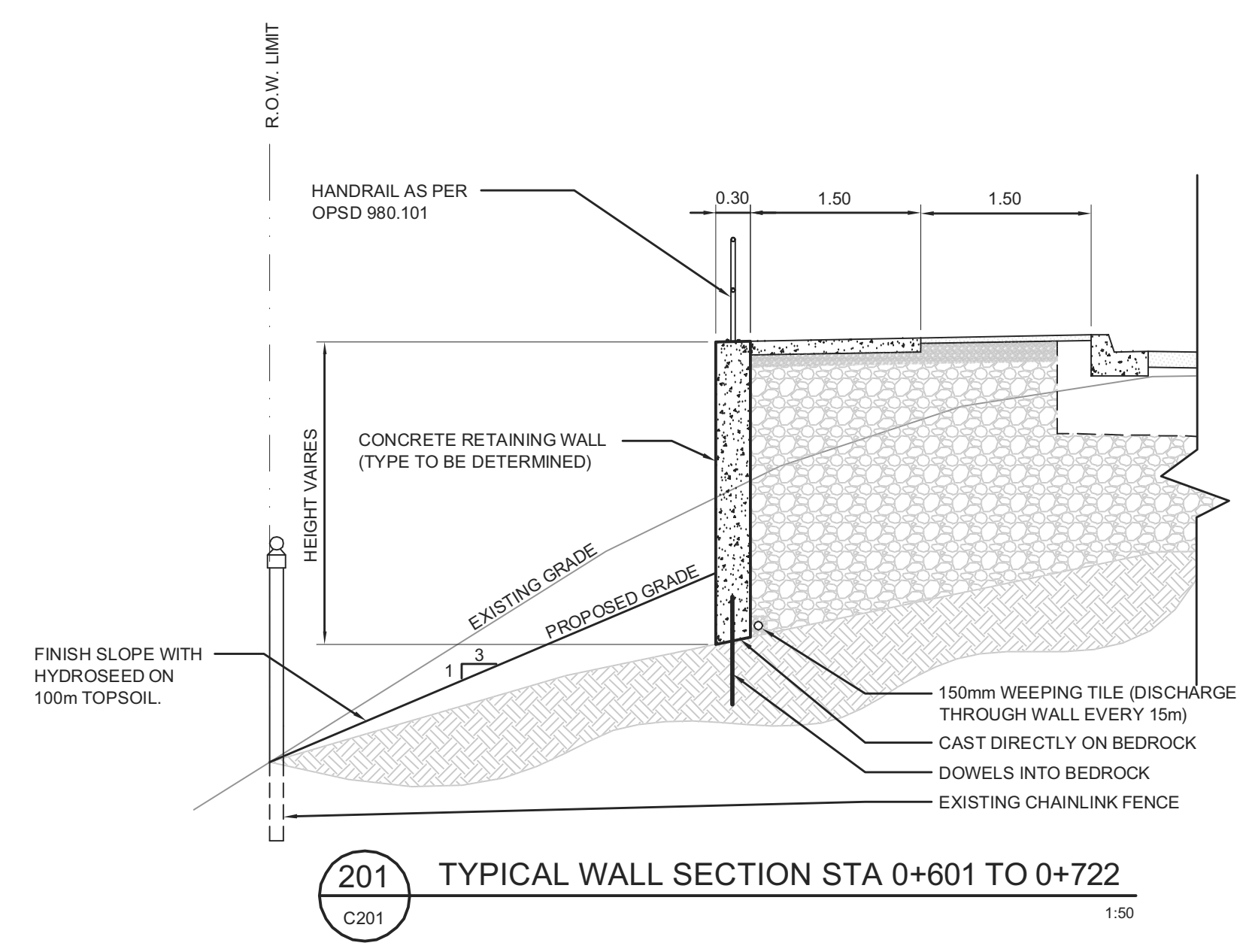
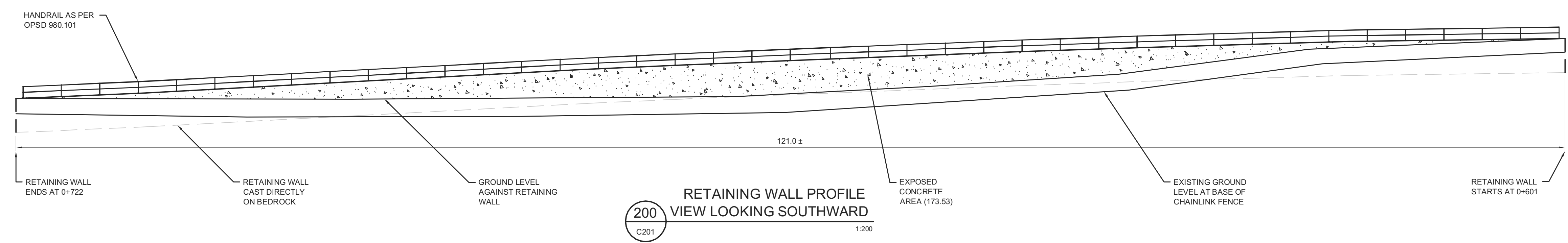
**HDR**  
JLR Project Number - 24109

**NORTH BAY**  
ONTARIO, CANADA

SEYMOUR STREET  
EA & PRELIMINARY  
DESIGN

RETAINING WALL  
PLAN AND  
SECTION

designer LJR	drawn by: JJB
checked by: LJR	approved by: LJR
date MAY 2012	drawing number C-201



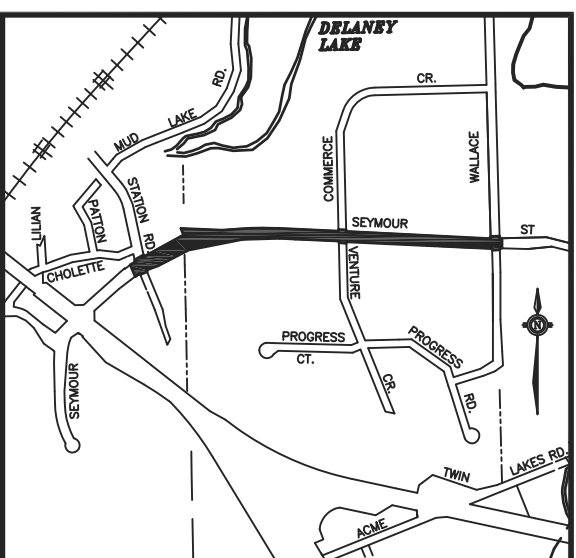
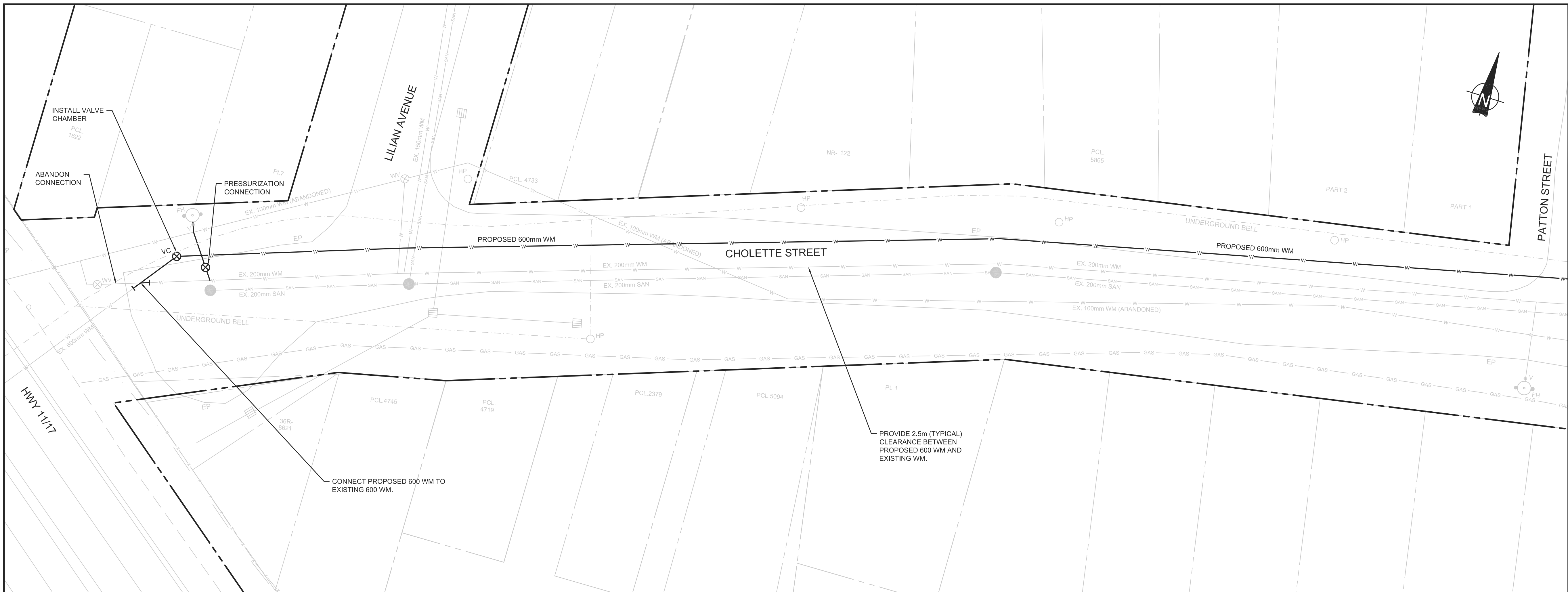
- NOTES:
- When sidewalk is not specified, posts shall be set in centre of 300mm dia x 450mm deep or 300 x 300 x 375mm deep concrete footings.
  - Anchors shall be installed according to manufacturer's specifications.
- A Concrete shall have a nominal minimum 28-Day compressive strength of 20MPa.  
 B Posts and railings shall be hot dip galvanized according to CSA G164 after fabrication.  
 C Posts shall be vertical. All exposed corners shall be ground smooth.  
 D Welding shall be according to CSA W59.  
 E All joints shall be shop welded.  
 F Pipe shall be according to ASTM A 53.  
 G A difference in elevation between the adjacent ground level and top of footing shall not exceed 600mm.  
 H All dimensions are in millimetres unless otherwise shown.

ONTARIO PROVINCIAL STANDARD DRAWING Nov 2009 Rev 2

**PEDESTRIAN BARRICADE INSTALLATION**

OPSD 980.101

- NOTES:
- RETAINING WALL CAST DIRECTLY ON BEDROCK.
  - EXISTING ELEVATIONS AT CHAINLINK FENCE TO BE MAINTAINED.
  - GROUND SLOPED AT 3H/1V FROM CHAINLINK FENCE UP TO RETAINING WALL.
  - HANDRAIL DESIGNED AND INSTALLED WITH ACCORDANCE TO OPSD 980.101
  - AREA OF THE RETAINING WALL PROFILE IS 322.53 SQUARE METERS
  - AREA OF THE RETAINING WALL PROFILE EXPOSED IS 173.53 SQUARE METERS



**KEY PLAN**

**LEGEND**

- W — EXISTING WATERMAIN
- W — PROPOSED WATERMAIN
- SAN — EXISTING SANITARY
- SAN — PROPOSED SANITARY
- STM — EXISTING STORM
- STM — PROPOSED STORM
- MH — EXISTING SANITARY MANHOLE
- MH — PROPOSED SANITARY MANHOLE
- MH — EXISTING STORM MANHOLE
- MH — PROPOSED STORM MANHOLE
- CB — EXISTING CATCHBASIN
- CB — PROPOSED CATCHBASIN
- FH — EXISTING FIRE HYDRANT
- VC — EXISTING VALVE CHAMBER
- WV — EXISTING WATERMAIN VALVE
- WWS — EXISTING WATERMAIN SHUTOFF
- S — EXISTING SANITARY CLEANOUT
- LS — EXISTING LIGHT STANDARD
- HP — EXISTING HYDRO POLE
- Guy — EXISTING GUY WIRE
- HP.L — EXISTING HYDRO POLE w/ LIGHT
- TP — EXISTING TRAFFIC LIGHT POLE
- HP.TL — EXISTING HYDRO POLE w/ TRAFFIC LIGHT POLE

GEOTECHNICAL INVESTIGATION  
MARCH 25, 2010.)

**REVISIONS**

no.	date	by	description
1.	9 AUG 2012	A	ISSUED FOR CLIENT REVIEW
2.	10 SEP 2012	B	ISSUED FOR PUBLIC INFORMATION CENTRE 1
3.	12 NOV 2012	C	ISSUED FOR CLIENT REVIEW
4.	16 NOV 2012	D	ISSUED FOR AGENCY REVIEW

**J.L. Richards & Associates Limited**  
175 Progress Road  
North Bay, ON Canada  
P1A 0S9  
Tel: 705 495 7597  
Fax: 705 495 6692

JLR Project Number - 24109

**NORTH BAY**  
ONTARIO CANADA  
Just North Enough to be PERFECT

**SEYMOUR STREET  
EA & PRELIMINARY  
DESIGN**

**600mm WATERMAIN  
INSTALLATION  
ON CHOLETTE ST.**

designer: LJR	drawn by: DJLH
checked by: LJR	approved by: LJR
scale: 1:250	
date: AUG. 2012	drawing number: C-300