
  
**1:76,000**  
 Map Projection: Universal Transverse Mercator  
 Map Datum: North America Datum 1983 Zone 17 T (Metric)

Metres  
 0 500 1,000 2,000 3,000 4,000  
 Statute Miles  
 0 0.25 0.5 1 1.5 2

  
**NORTH BAY**  
*Just North Enough to be PERFECT*

Design and Developed by Planning Services, Engineering and Environmental Services, Parks, Recreation, and Leisure and Information Systems Departments.  
 © City of North Bay

**Data Sources:**  
 City of North Bay GIS  
 Municipal Property Assessment Corporation (MPAC)  
 Ontario Ministry of Natural Resources (OMNR)  
 North Bay Mattawa Conservation Authority (NBMCA)

The City of North Bay makes no guarantees, representations or warranties respecting the accuracy, completeness or reliability of the mapping data either express or implied.  
 The City of North Bay specifically disclaims any and all liability, including without limitation, consequential and incidental damages, that may arise in any way from the use of or reliance on the mapping data.

This is not a legal plan or survey and is not to be used as a navigational aid.  
 Published Monday, January 23, 2012  
 File: Schedule\_3A\_Environmental\_Constraints\_Overlay\_v2\_11x17

### Official Plan Schedule 3A Environmental Constraints Overlay

**Environmental Constraints Classification**

<ul style="list-style-type: none"> <li><span style="display: inline-block; width: 15px; height: 10px; background-color: #90EE90; border: 1px solid black; margin-right: 5px;"></span> Development Constraint Area</li> <li><span style="display: inline-block; width: 15px; height: 10px; background-color: #FFFF00; border: 1px solid black; margin-right: 5px;"></span> Provincially Significant Wetland</li> <li><span style="display: inline-block; width: 15px; height: 10px; background-color: #A0522D; border: 1px solid black; margin-right: 5px;"></span> Escarpment</li> </ul>	<ul style="list-style-type: none"> <li><span style="display: inline-block; width: 15px; height: 10px; background-color: #FFD700; border: 1px solid black; margin-right: 5px;"></span> Floodplain One Zone Policy Area</li> <li><span style="display: inline-block; width: 15px; height: 10px; background-color: #FFA500; border: 1px solid black; margin-right: 5px;"></span> Floodplain Two Zone Policy Area</li> <li><span style="display: inline-block; width: 15px; height: 10px; background-color: #ADD8E6; border: 1px solid black; margin-right: 5px;"></span> Large Inland Lake Policy Area</li> </ul>
--	--

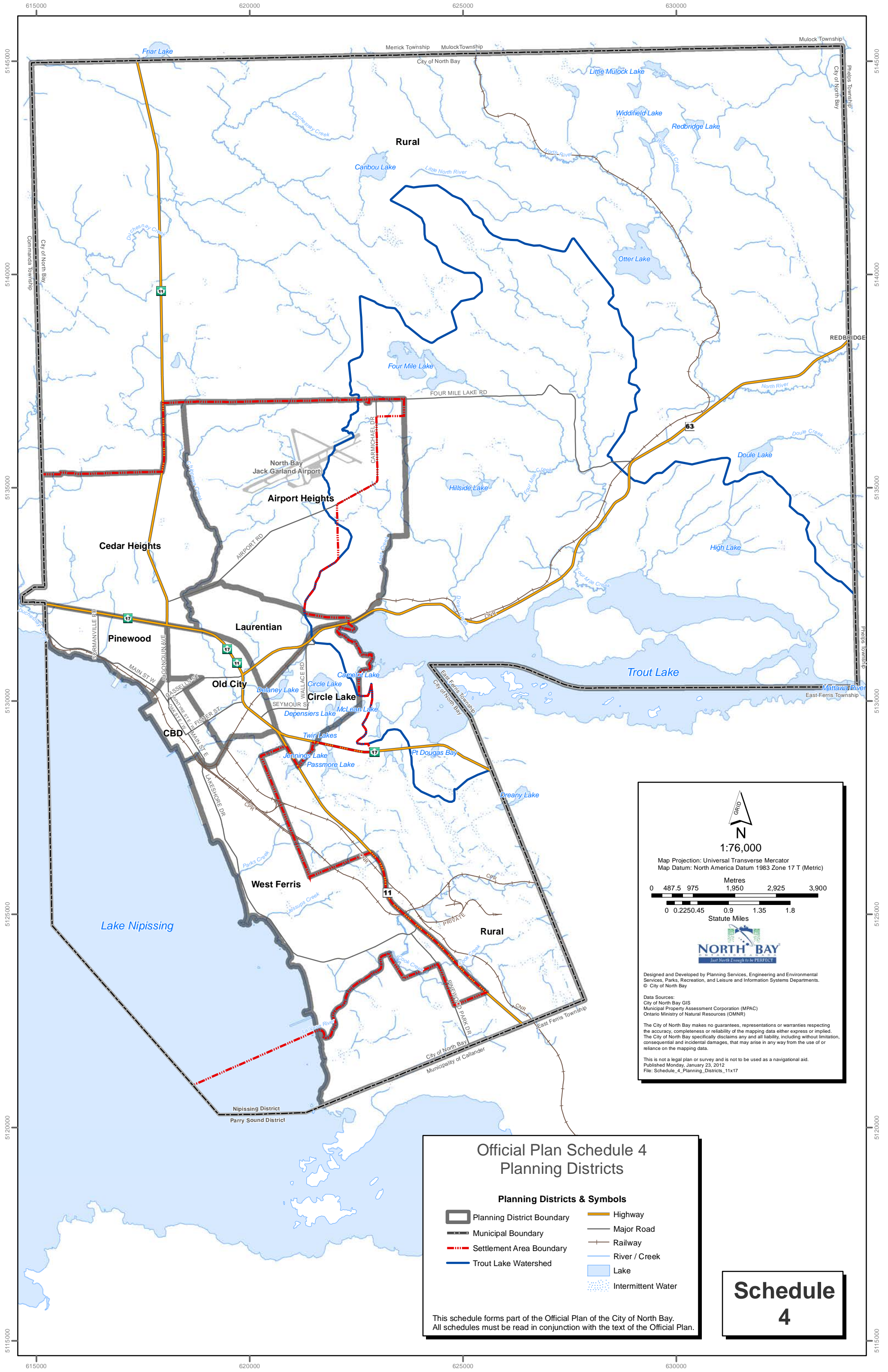
**Symbols**


<ul style="list-style-type: none"> <li><span style="display: inline-block; border-top: 1px dashed black; width: 20px; margin-right: 5px;"></span> Municipal Boundary</li> <li><span style="display: inline-block; border-top: 2px dashed red; width: 20px; margin-right: 5px;"></span> Settlement Area Boundary</li> <li><span style="display: inline-block; border-bottom: 2px solid blue; width: 20px; margin-right: 5px;"></span> Trout Lake Watershed</li> <li><span style="display: inline-block; width: 10px; height: 10px; background-color: #ADD8E6; border: 1px solid black; margin-right: 5px;"></span> Lake</li> </ul>	<ul style="list-style-type: none"> <li><span style="display: inline-block; border-bottom: 2px solid orange; width: 20px; margin-right: 5px;"></span> Highway</li> <li><span style="display: inline-block; border-bottom: 1px solid black; width: 20px; margin-right: 5px;"></span> Major Road</li> <li><span style="display: inline-block; border-bottom: 1px solid blue; width: 20px; margin-right: 5px;"></span> River / Creek</li> <li><span style="display: inline-block; border-bottom: 1px dashed black; width: 20px; margin-right: 5px;"></span> Railway</li> <li><span style="display: inline-block; width: 10px; height: 10px; background-color: #ADD8E6; border: 1px solid black; margin-right: 5px;"></span> Intermittent Water</li> </ul>
---	---

This schedule forms part of the Official Plan of the City of North Bay.  
 All schedules must be read in conjunction with the text of the Official Plan.


Schedule  
3A





  
**1:76,000**  
 Map Projection: Universal Transverse Mercator  
 Map Datum: North America Datum 1983 Zone 17 T (Metric)

Metres  
 0 487.5 975 1,950 2,925 3,900  
 Statute Miles  
 0 0.2250.45 0.9 1.35 1.8

  
 Designed and Developed by Planning Services, Engineering and Environmental Services, Parks, Recreation, and Leisure and Information Systems Departments.  
 © City of North Bay








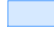


Data Sources:  
 City of North Bay GIS  
 Municipal Property Assessment Corporation (MPAC)  
 Ontario Ministry of Natural Resources (OMNR)

The City of North Bay makes no guarantees, representations or warranties respecting the accuracy, completeness or reliability of the mapping data either express or implied. The City of North Bay specifically disclaims any and all liability, including without limitation, consequential and incidental damages, that may arise in any way from the use of or reliance on the mapping data.

This is not a legal plan or survey and is not to be used as a navigational aid.  
 Published Monday, January 23, 2012  
 File: Schedule\_4\_Planning\_Districts\_11x17

### Official Plan Schedule 4 Planning Districts

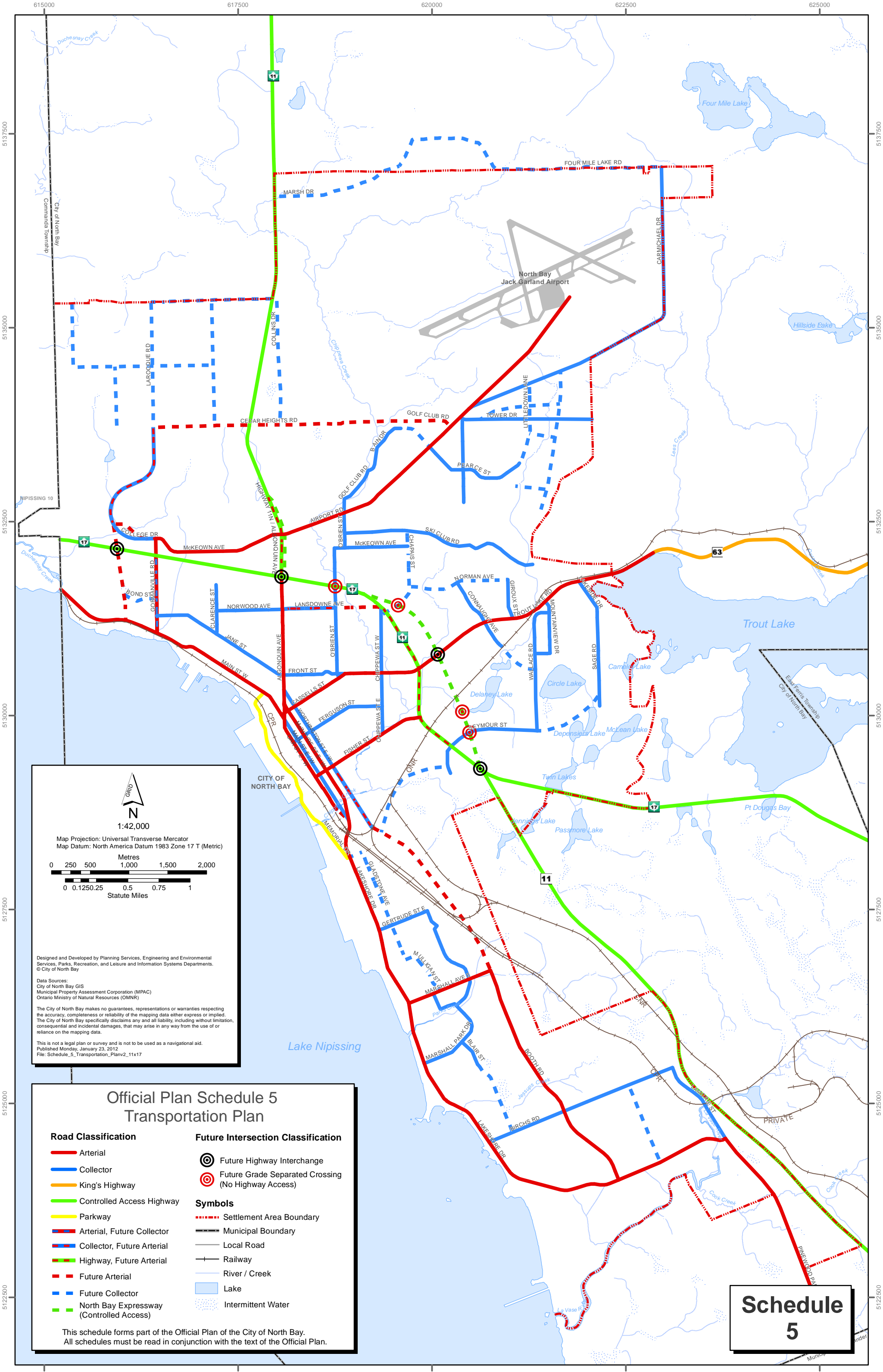
**Planning Districts & Symbols**

 Planning District Boundary	 Highway
 Municipal Boundary	 Major Road
 Settlement Area Boundary	 Railway
 Trout Lake Watershed	 River / Creek
	 Lake
	 Intermittent Water

This schedule forms part of the Official Plan of the City of North Bay.  
 All schedules must be read in conjunction with the text of the Official Plan.

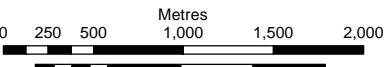
# Schedule 4





1:42,000

Map Projection: Universal Transverse Mercator  
Map Datum: North America Datum 1983 Zone 17 T (Metric)



Designed and Developed by Planning Services, Engineering and Environmental Services, Parks, Recreation, and Leisure and Information Systems Departments.  
© City of North Bay

Data Sources:  
City of North Bay GIS  
Municipal Property Assessment Corporation (MPAC)  
Ontario Ministry of Natural Resources (OMNR)

The City of North Bay makes no guarantees, representations or warranties respecting the accuracy, completeness or reliability of the mapping data either express or implied. The City of North Bay specifically disclaims any and all liability, including without limitation, consequential and incidental damages, that may arise in any way from the use of or reliance on the mapping data.

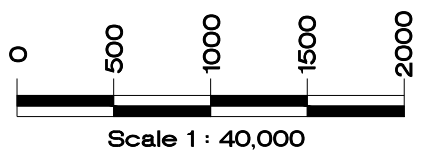
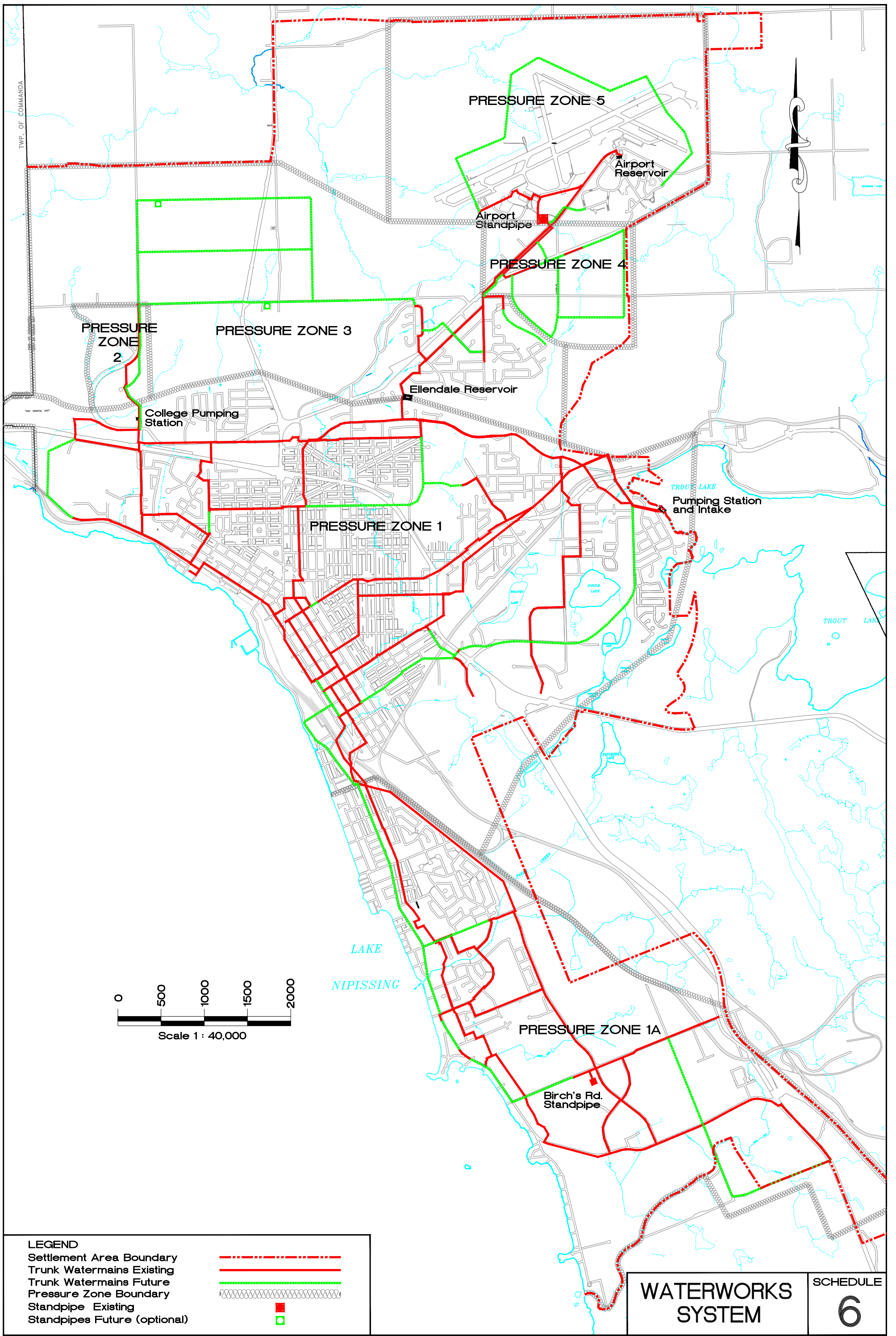
This is not a legal plan or survey and is not to be used as a navigational aid.  
Published Monday, January 23, 2012  
File: Schedule\_5\_Transportation\_Plan2\_11x17

### Official Plan Schedule 5 Transportation Plan

- |  |   |
|--|---|
| <b>Road Classification</b>               | <b>Future Intersection Classification</b>           |
| Arterial                                 | Future Highway Interchange                          |
| Collector                                | Future Grade Separated Crossing (No Highway Access) |
| King's Highway                           |   |
| Controlled Access Highway                | <b>Symbols</b>                                      |
| Parkway                                  | Settlement Area Boundary                            |
| Arterial, Future Collector               | Municipal Boundary                                  |
| Collector, Future Arterial               | Local Road  |
| Highway, Future Arterial                 | Railway   |
| Future Arterial                          | River / Creek                                       |
| Future Collector                         | Lake  |
| North Bay Expressway (Controlled Access) | Intermittent Water                                  |

This schedule forms part of the Official Plan of the City of North Bay. All schedules must be read in conjunction with the text of the Official Plan.

**Schedule  
5**

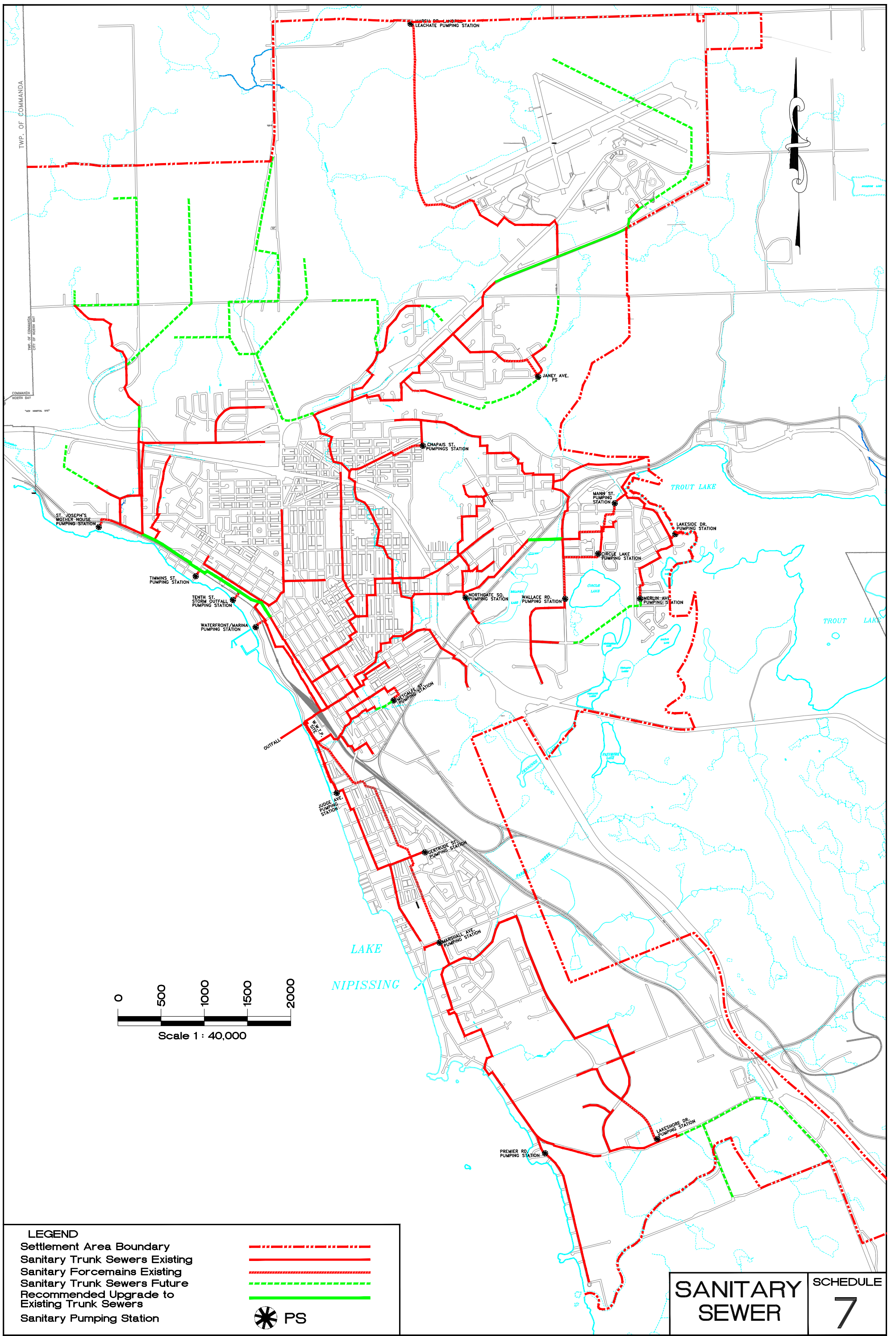


LEGEND	
Settlement Area Boundary	
Trunk Watermains Existing	
Trunk Watermains Future	
Pressure Zone Boundary	
Standpipe Existing	
Standpipes Future (optional)	

<b>WATERWORKS SYSTEM</b>	SCHEDULE
	6

# NORTH BAY OFFICIAL PLAN



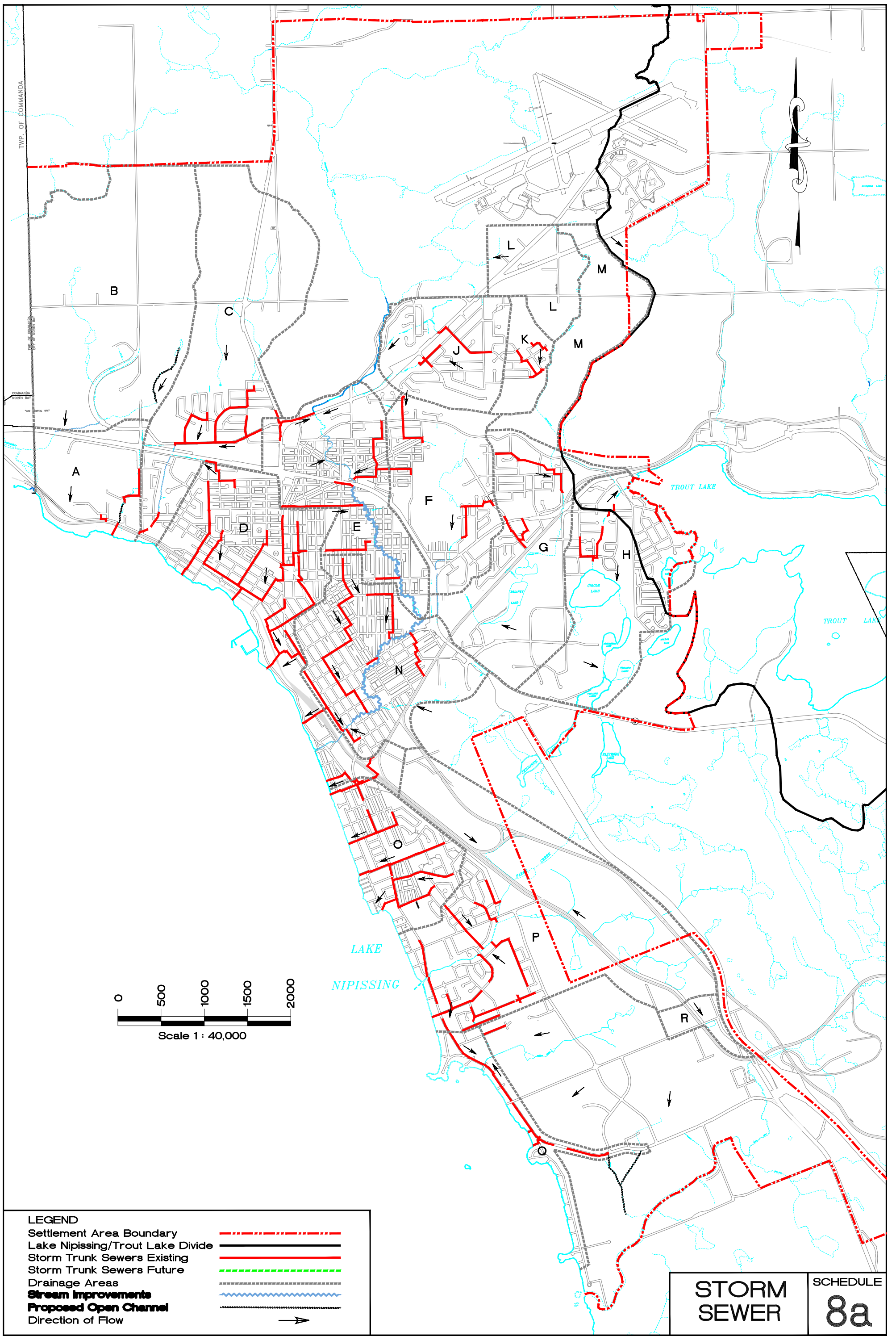


LEGEND	
Settlement Area Boundary	--- (Red dashed line)
Sanitary Trunk Sewers Existing	— (Solid red line)
Sanitary Forcemains Existing	- - - (Red dashed line)
Sanitary Trunk Sewers Future	- - - (Green dashed line)
Recommended Upgrade to Existing Trunk Sewers	— (Green solid line)
Sanitary Pumping Station	PS (Star symbol)

<b>SANITARY SEWER</b>	SCHEDULE
	<b>7</b>

# NORTH BAY OFFICIAL PLAN





**LEGEND**

- Settlement Area Boundary
- Lake Nipissing/Trout Lake Divide
- Storm Trunk Sewers Existing
- Storm Trunk Sewers Future
- Drainage Areas
- Stream Improvements**
- Proposed Open Channel**
- Direction of Flow


<b>STORM SEWER</b>	<b>SCHEDULE 8a</b>
--------------------	--------------------

# NORTH BAY OFFICIAL PLAN












# Official Plan Appendix E Algonquin Land Claim Consultation Area

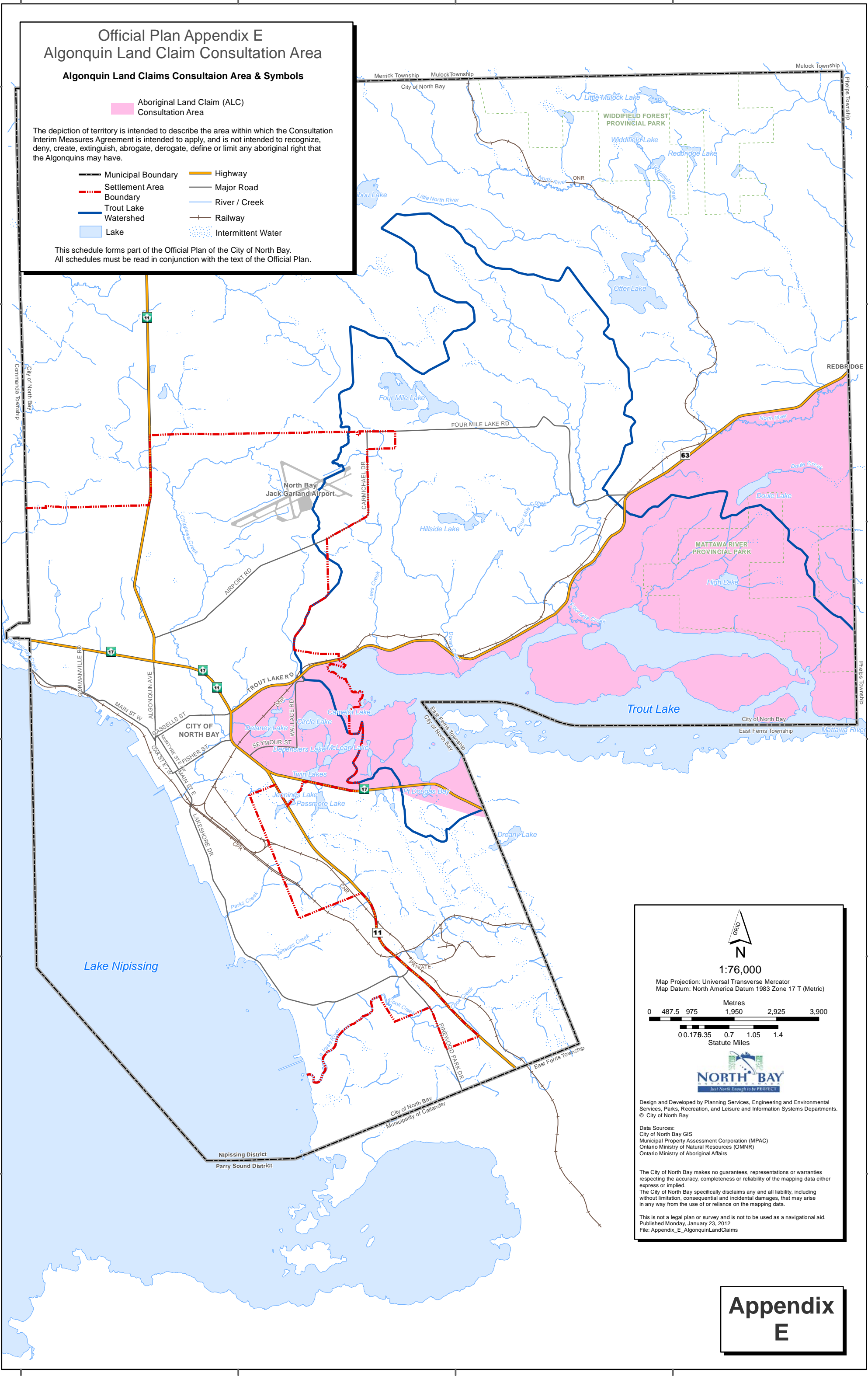
## Algonquin Land Claims Consultation Area & Symbols


 Aboriginal Land Claim (ALC) Consultation Area

The depiction of territory is intended to describe the area within which the Consultation Interim Measures Agreement is intended to apply, and is not intended to recognize, deny, create, extinguish, abrogate, derogate, define or limit any aboriginal right that the Algonquins may have.

-  Municipal Boundary
-  Settlement Area Boundary
-  Trout Lake Watershed
-  Lake
-  Highway
-  Major Road
-  River / Creek
-  Railway
-  Intermittent Water

This schedule forms part of the Official Plan of the City of North Bay. All schedules must be read in conjunction with the text of the Official Plan.






**1:76,000**

Map Projection: Universal Transverse Mercator  
Map Datum: North America Datum 1983 Zone 17 T (Metric)

Metres  
0 487.5 975 1,950 2,925 3,900

Statute Miles  
0 0.176 0.35 0.7 1.05 1.4



Design and Developed by Planning Services, Engineering and Environmental Services, Parks, Recreation, and Leisure and Information Systems Departments.  
© City of North Bay

Data Sources:  
City of North Bay GIS  
Municipal Property Assessment Corporation (MPAC)  
Ontario Ministry of Natural Resources (OMNR)  
Ontario Ministry of Aboriginal Affairs

The City of North Bay makes no guarantees, representations or warranties respecting the accuracy, completeness or reliability of the mapping data either express or implied.  
The City of North Bay specifically disclaims any and all liability, including without limitation, consequential and incidental damages, that may arise in any way from the use of or reliance on the mapping data.

This is not a legal plan or survey and is not to be used as a navigational aid.  
Published Monday, January 23, 2012  
File: Appendix\_E\_AlgonquinLandClaims

# Appendix E