

THE CORPORATION OF THE CITY OF NORTH BAY

BY-LAW NO. 16-70

BEING A BY-LAW TO AMEND BY-LAW NO. 1097  
OF THE FORMER TOWNSHIP OF WIDDIFIELD  
PURSUANT TO SECTION 30 OF THE PLANNING  
ACT, R.S.O. 1960 AND AMENDMENTS THERETO.

WHEREAS upon the request of the property owner concerned and with the approval of the local Planning Board it is considered advisable to amend By-law No. 1097 of the former Township of Widdifield which is now applicable to part of the City of North Bay to provide for an alteration in zone designation as shown on the District Map which forms part of said By-law;

NOW THEREFORE THE COUNCIL OF THE CORPORATION OF THE CITY OF NORTH BAY HEREBY ENACTS AS FOLLOWS:

1. The District Map which forms part of By-law No. 1097 of the former Township of Widdifield, and designates part of Lot 20, Concession III, in the City of North Bay as "Bush District - B", which lands are more particularly described, and shown outlined in red, in Schedules "A" and "B" respectively, attached hereto and forming part hereof, is amended to show the said lands zoned as "Light Industrial District M1".

2. This By-law shall come into full force and effect upon the final passing thereof subject to the approval of the Ontario Municipal Board.

READ A FIRST TIME IN OPEN COUNCIL THIS 10TH DAY OF FEBRUARY, 1970.

READ A SECOND TIME IN OPEN COUNCIL THIS 10TH DAY OF FEBRUARY, 1970.

READ A THIRD TIME IN OPEN COUNCIL AND FINALLY ENACTED AND PASSED THIS 10TH DAY OF FEBRUARY, 1970.

.....  
MAYOR  
.....  
CITY CLERK

THIS IS SCHEDULE "A" TO BY-LAW NO. 16-70 OF THE CORPORATION OF THE CITY OF NORTH BAY

.....

PROPERTY DESCRIPTION

Part of Lot 20, Concession III  
(former Twp. of Widdifield)

Beginning at a point being the south west corner of Lot 20 Concession III in the former Township of Widdifield.

Thence northerly a distance of 2640'.

Thence easterly and parallel to a line between Concessions II and III a distance of 55.5' to a point of commencement.

Thence easterly a distance of 850'.

Thence southerly and parallel to a line between Lots 20 and 21 a distance of 700'.

Thence westerly and parallel to a line between Concession II and III a distance of 850'.

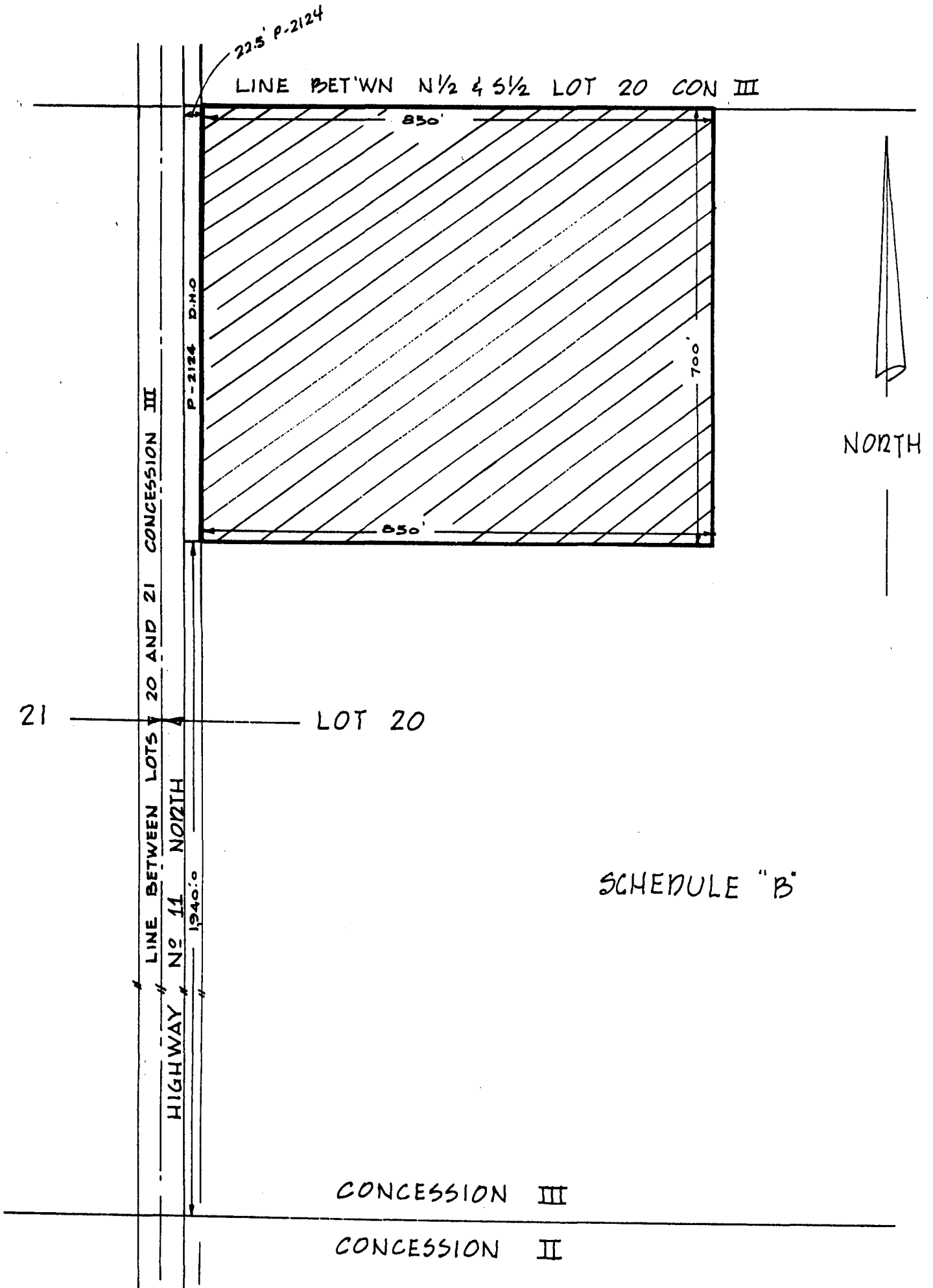
Thence northerly and parallel to the easterly limit of Highway 11 a distance of 700' to the point of commencement.

.....

# PLAN SHOWING PART OF LOT 20 CONCESSION III

(FORMER TOWNSHIP OF WIDDIFIELD)

TO BE REZONED FROM BUSH DISTRICT TO LIGHT INDUSTRIAL M-1



This is Schedule "B" to By-law  
No. 16-70.

CORPORATION CITY OF NORTH BAY ONTARIO		
SCHEDULE "B"		
DRAWN BY: CHK'D JFB.	SCALE 1" = 200' DATE JAN. 1970	DWG NO.



R. 2188-70

ONTARIO

ONTARIO MUNICIPAL BOARD

IN THE MATTER OF Section 30 of The Planning Act, (R.S.O. 1960, c. 296)

- and -

IN THE MATTER OF an application by The Corporation of the City of North Bay for approval of its Restricted Area By-law 16-70

BEFORE :

A. H. ARRELL, Q.C., Vice-Chairman

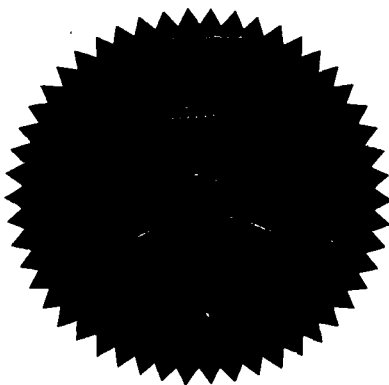
- and -

J. V. LUDGATE, Member

Friday, the 1st day of May, 1970

UPON THE APPLICATION of The Corporation of the City of North Bay, upon consideration of the material filed, and it appearing that notice of application has been given as directed by the Board and that no objections to approval have been received by the clerk of the applicant corporation, as appears by affidavit filed;

THE BOARD ORDERS, under and in pursuance of the legislation hereinbefore referred to, and of any and all other powers vested in the Board, that By-law 16-70 passed the 10th day of February, 1970, be and the same is hereby approved.



SECRETARY

Stamp with fields: ENTERED, O. B. No. R3, Folio No. 355, MAY 1 1970, and signature of R. Scott, Secretary, Ontario Municipal Board.