

THE CORPORATION OF THE CITY OF NORTH BAY

BY-LAW NO. 138-77

BEING A BY-LAW TO GIVE A NAME TO A HIGHWAY.

WHEREAS it is considered desirable to give a name to a highway hereinafter described pursuant to Paragraph 97 of Section 354 (1) of The Municipal Act, R.S.O. 1970.

NOW THEREFORE THE COUNCIL OF THE CORPORATION OF THE CITY OF NORTH BAY HEREBY ENACTS AS FOLLOWS:

- 1. That part of the highway as shown on a plan attached hereto as Schedule "A" and being more particularly described as a road allowance shown as Parts 4, 5 and 6 on Plan NR-2367 in the City of North Bay shall be known as "Ellendale Drive".

READ A FIRST TIME IN OPEN COUNCIL THIS 21ST DAY OF NOVEMBER, 1977.

READ A SECOND TIME IN OPEN COUNCIL THIS 5TH DAY OF DECEMBER, 1977.

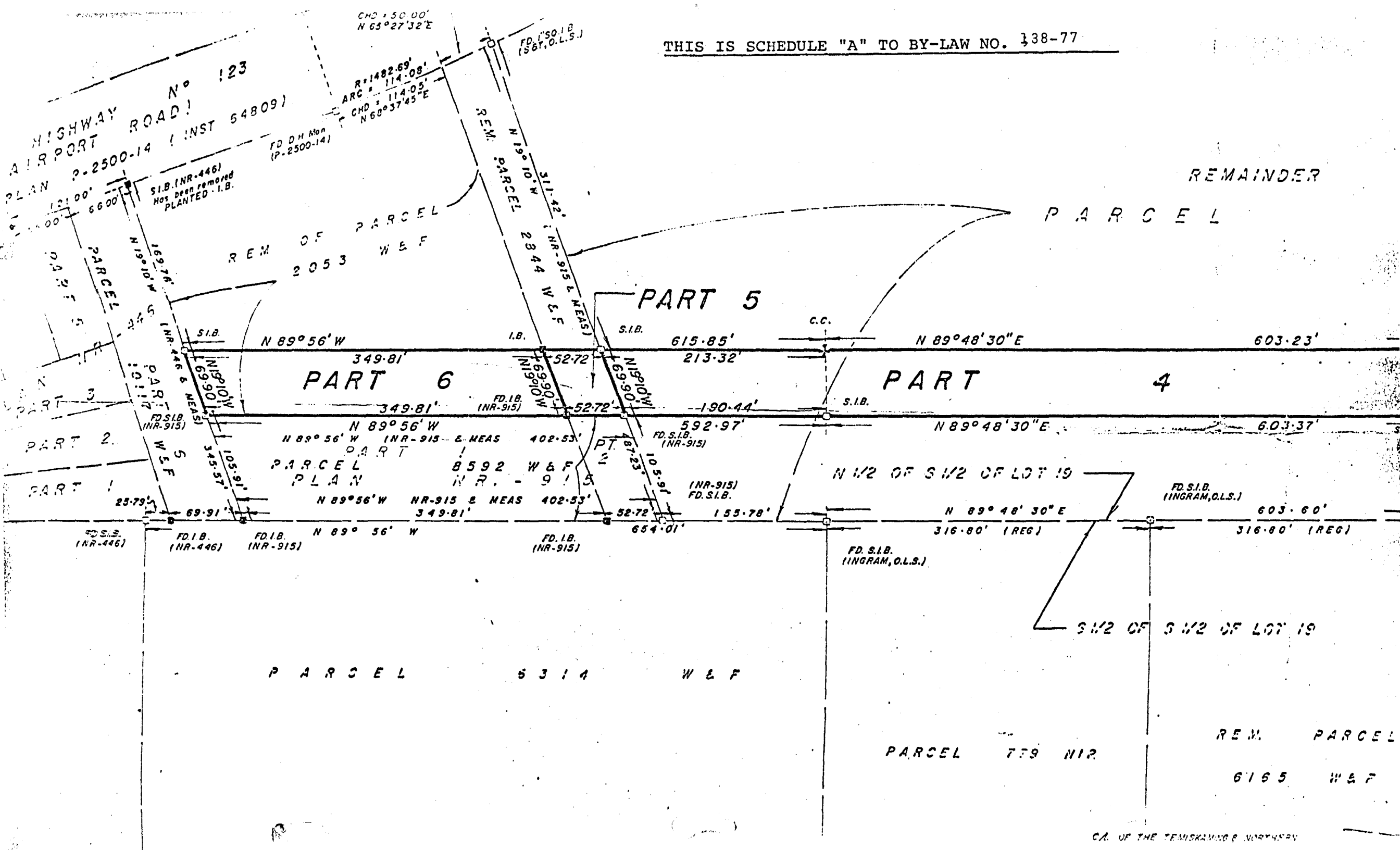
READ A THIRD TIME IN OPEN COUNCIL AND FINALLY ENACTED AND PASSED THIS 5TH DAY OF DECEMBER, 1977.

.....
 MAYOR

.....
 CITY CLERK

THIS IS SCHEDULE "A" TO BY-LAW NO. 138-77

AIRPORT ROAD No 123
PLAN P-2500-14 (INST 54809)



S.I.B. (NR-446)
Hos. been removed
PLANTED I.B.

F.D. D.H. Mon
(P-2500-14)

CH2 = 50.00'
N 65° 27' 32" E

R = 1482.69'
ARC = 114.08'
CHD = 114.05'
N 60° 37' 45" E

F.D. S.I.B.
(587, O.L.S.)

REMAINDER

PARCEL

PART 5

N 89° 56' W

PART 6

615.85'

N 89° 48' 30" E

603.23'

PART 4

PART 2

PART 1

N 89° 56' W

NR-915 & MEAS 402.53'

592.97'

N 89° 48' 30" E

603.37'

N 1/2 OF S 1/2 OF LOT 19

N 89° 56' W NR-915 & MEAS 402.53'

349.81'

52.72'

N 89° 48' 30" E

603.60'

S 1/2 OF S 1/2 OF LOT 19

PARCEL

6314

W & F

PARCEL

779 N12

REM. PARCEL

6165

W & F