

THE CORPORATION OF THE CITY OF NORTH BAY
BY-LAW NO. 27-97

**A BY-LAW TO AMEND BY-LAW NO. 28-80 TO
REZONE CERTAIN LANDS ON AUBREY STREET
FROM A "RESIDENTIAL SECOND DENSITY
(R2)" ZONE TO A "RESIDENTIAL THIRD
DENSITY (R3)" ZONE
(D. HAWS - 466 AUBREY STREET)**

WHEREAS the owner of the subject property has requested a rezoning;

AND WHEREAS the Council of The Corporation of the City of North Bay has ensured that adequate information has been made available to the public, and has held at least one public meeting after due notice for the purpose of informing the public of this By-law;

AND WHEREAS it is deemed desirable to amend the zone designation shown on Schedule "B-43" of By-law No. 28-80 pursuant to Section 34 of the Planning Act R.S.O. 1990 as amended.

NOW THEREFORE THE COUNCIL OF THE CORPORATION OF THE CITY OF NORTH BAY HEREBY ENACTS AS FOLLOWS:

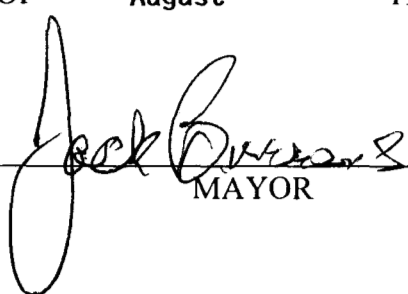
- 1) Schedule "B-43" of By-law No. 28-80 is amended by changing the zoning designation of the property shown on Schedule "A" attached hereto (which property is more particularly described as Lots 740 and 741, Plan M-165 along Aubrey Street in the City of North Bay, shown as hatched on Schedule "B" attached hereto from a "Residential Second Density (R2)" zone to a "Residential Third Density (R3)" zone.
- 2) All buildings or structures erected or altered and the use of land in such "Residential Third Density (R3)" zone shall conform to all applicable provisions of By-law No. 28-80 of The Corporation of the City of North Bay.
- 3)
 - a) Notice of this By-law shall be given by the Clerk in the manner and form and to the persons prescribed by Section 4 of O.Reg. 199/96.
 - b) Where no notice of appeal is filed with the Clerk of The Corporation of the City of North Bay within twenty (20) days after the day that the giving of written notice as required by the Act is completed, then this By-law shall be deemed to have come into force on the day it was passed.
 - c) Where one or more notices of appeal are filed with the Clerk of The Corporation of the City of North Bay within twenty (20) days after the day that the giving of written notice as required by the Act is completed, setting out the objection to the By-law and the reasons in support of the objection, then this By-law shall not

come into force until all appeals have been finally disposed of, whereupon the By-law shall be deemed to have come into force on the day it was passed.

READ A FIRST TIME IN OPEN COUNCIL THE 12th DAY OF May
1997.

READ A SECOND TIME IN OPEN COUNCIL THE 18th DAY OF August
1997.

READ A THIRD TIME IN OPEN COUNCIL AND PASSED THIS 18th DAY
OF August 1997.


MAYOR


CITY CLERK

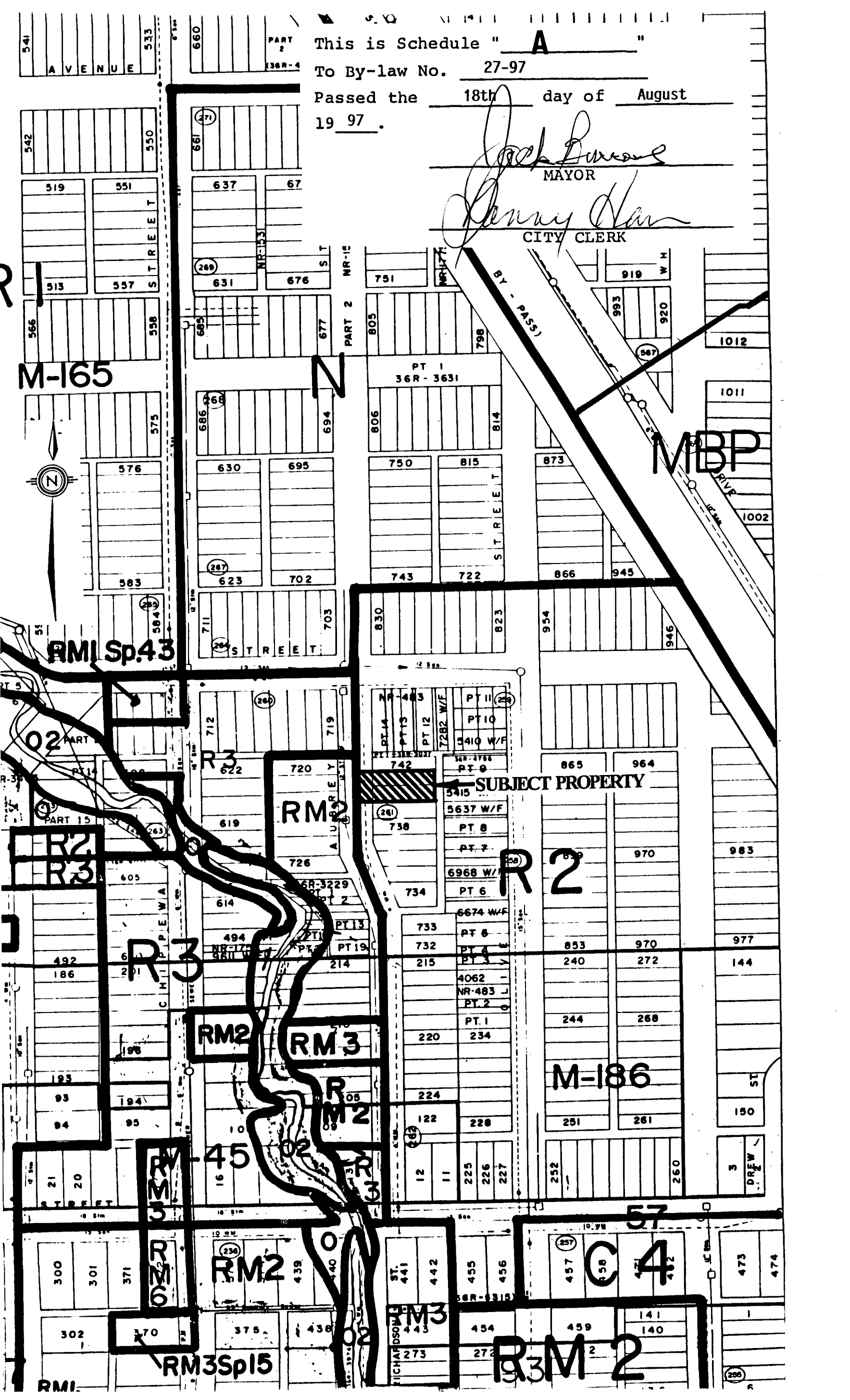
This is Schedule " A "

To By-law No. 27-97

Passed the 18th day of August
19 97.

Jack Bureau
MAYOR

Denny Van
CITY CLERK



↑ SUBJECT PROPERTY

RM2

R2

M-186

RM2

RM3

C4

RM3Sp15

R3M2

M-165

RM1Sp43

MBP



541
A V E N U E
533

542
550

519 551
S T R E E T

513 557

566 556

576 575

583

584

58

02

02

02

02

02

02

02

02

02

02

02

660

661

637 67

631 676

685 677

686 694

630 695

623 702

711 703

712 719

622 720

619 726

614 726

494 214

186

193 194

93 95

21 20

300 301 371

302 370 375 438

PART 2
136R-4

PART 2 NR-15

PART 2 NR-15

PART 2 NR-15

PART 2 NR-15

PT I
36R - 3631

806 814

750 815

743 722

830 823

NR-483
PT 14
PT 13
PT 12
7282 W/F
PT 10
5410 W/F
PT 9
5415
5637 W/F
PT 8
PT 7
6968 W/F
PT 6
6674 W/F
PT 5
733
732
215
4062
NR-483
PT 2
PT 1
220 234

736

734

733

215

220 234

224 122 228

12 11 225 226 227

ST. RICHARDSON
441 442 455 456

273 272

751

805 798

919 920

993 920

1012

1011

873

866 945

954 946

865 964

853 970

240 272

244 268

251 261

252 260

3 150

473 474

457 458 442

141 140

286

This is Schedule " B "

To By-law No. 27-97

Passed the 18th day of August 19 97

John Barrows
MAYOR
Dorothy Van
CITY CLERK



M-165

HIGH STREET

CHIPPEWA STREET

AUBREY STREET

OLIVE STREET

CASSELL'S STREET

RICHARDSON STREET

DREW STREET

SUBJECT PROPERTY

FROM "RESIDENTIAL SECOND DENSITY (R.2)" TO RESIDENTIAL THIRD DENSITY (R.3)

M-186

57

57

9

3

280

370

P-56

P-57

280

238

267

260

263

274

262

220

237

PT. 2 (36R-7199)

PT. 1 (36R-3631)

PT. 9 (36R-8349)

PT. 1 (36R-8777)

PT. 1 (36R-8408)

PT. 1 (36R-7484)

PT. 1 (36R-7380)

PT. 3 (36R-7380)

PT. 4 (36R-7380)

PT. 1 (36R-9481)

PT. 2 (36R-9481)

PT. 1 (36R-9481)

PT. 2 (36R-9481)

PT. 1 (36R-9481)

PT. 2 (36R-9481)

PT. 1 (36R-9481)

PT. 2 (36R-9481)

PT. 1 (36R-9481)

PT. 2 (36R-9481)

PT. 1 (36R-9481)

PT. 2 (36R-9481)

(36R-8183)

(36R-9315)

(36R-9793)

36R-100

PART 2

DR. 1002

PT. 6 (36R-7416)

PT. 6 (36R-8349)

PT. 10

PT. 1

PT. 1

PT. 1

PT. 1

PT. 1

PT. 1

DUKE

DUKE

DUKE

DUKE

DUKE

DUKE

DUKE

DUKE

DUKE

DUKE

382

383

389

390

399

438

439

4016

469

470

PT. 3 (36R-8309)

PT. 4 (36R-8309)

PT. 5 (36R-8309)

PT. 6 (36R-8309)

PT. 7 (36R-8309)

PT. 8 (36R-8309)

PT. 9 (36R-8309)

PT. 10 (36R-8309)

PT. 11 (36R-8309)

542

519

551

513

557

566

567

512

576

505

583

591

598

590

500

605

496

493

610

661

637

67

631

67

686

630

695

625

702

712

622

720

619

726

615

614

494 W/F

491 W/F

661

637

67

631

67

686

630

695

625

702

712

622

720

619

726

615

614

494 W/F

491 W/F

661

637

67

631

67

686

630

695

625

702

712

622

720

619

726

615

614

494 W/F

491 W/F

661

637

67

631

67

686

630

695

625

702

712

622

720

619

726

615

614

494 W/F

491 W/F

661

637

67

631

67

686

630

695

625

702

712

622

720

619

726

615

614

494 W/F

491 W/F

661

637

67

631

67

686

630

695

625

702

712

622

720

619

726

615

614

494 W/F

491 W/F

661

637

67

631

67

686

630

695

625

702

712

622

720

619

726

615

614

494 W/F

491 W/F

661

637

67

631

67

686

630

695

625

702

712

622

720

619

726

615

614

494 W/F

491 W/F

661

637

67

631

67

686

630

695

625

702

712

622

720

619

726

615

614

494 W/F

491 W/F

661

637

67

631

67

686

630

695

625

702

712

622

720

619

726

615

614

494 W/F

491 W/F

661

637

67

631

67

686

630

695

625

702

712

622

720

619

726

615

614

494 W/F

491 W/F

661

637

67

631

67

686

630

695

625